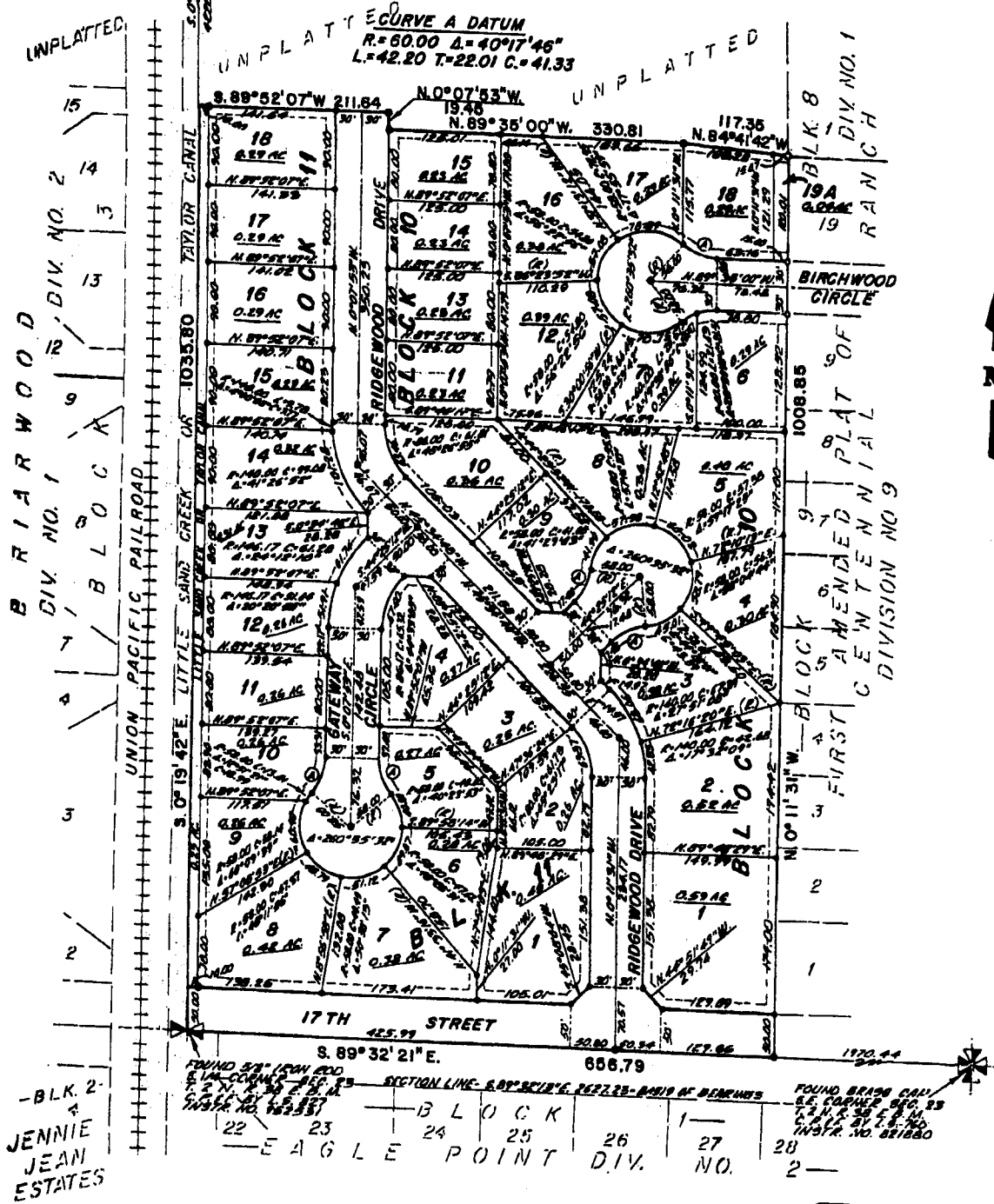


CENTENNIAL RANCH

DIVISION NO. 10

AN ADDITION TO THE CITY OF AMMON,
BONNEVILLE COUNTY, IDAHO
IN THE S.W. 1/4 S.E. 1/4 SECTION 23 T.2 N. R. 38 E. B.M.



-BLK. 2-
JENNIE
JEAN
ESTATES

FOUND BRASS NAIL
S.E. CORNER SEC. 23
T.2 N. R. 38 E. B.M.
C.S. 12 BY T.S. NO.
INSTR. NO. 221880

SECTION LINE S. 89°32'21\"/>

22	23	24	25	26	27	28
EAGLE POINT DIV. NO.						

LEGEND & NOTES

- 5/8" x 30" Steel Re-bar set with plastic cap stamped L.S.8795
- 1/2" x 24" Steel Re-bar set with plastic cap stamped L.S.8795
- 5/8" Steel Re-bar found with caps stamped L.S.722
- 1/2" Steel Re-bar found with caps stamped L.S.722

A 25' foot wide Utility Easement is hereby granted along all road frontages within each lot.
All other easements are eight feet wide unless otherwise noted.

Direct access onto 17th Street from lots 1, 7 and 8, Block 11, and Lot 1, Block 10
IS NOT ALLOWED

Lot 18A, Block 10 is a non-building lot and it is to be sold as an addition to Lot 18, Block 8 of the
First Amended Plat of Centennial Ranch, Division No. 9.

First American Title Company
Idaho Falls, Idaho 83404

This sketch is made solely for the purpose of assisting in locating the premises. The company assumes no liability for alleged loss or damage which may result from reliance on this map.

