

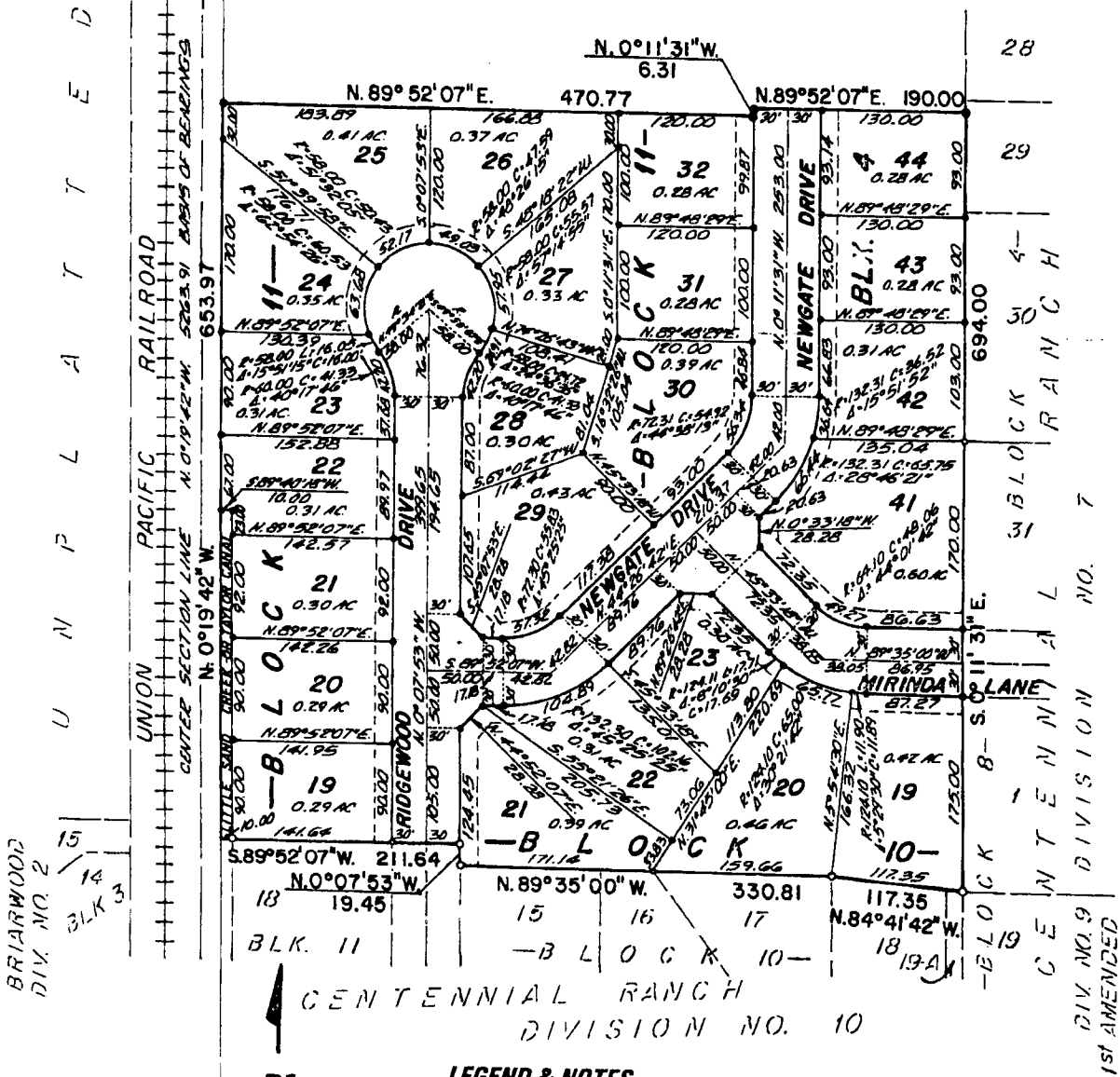
STATE PLAT BOARD CAP
 N. 1/4 CORNER SEC. 23
 T. 2 N. R. 38 E. B. M.
 C. 7. 1/2 BY 7. 5 1/2
 17572. NO. 937530

CENTENNIAL RANCH DIVISION NO. 11

AN ADDITION TO THE CITY OF AMMON,
 BONNEVILLE COUNTY, IDAHO

IN THE W. 1/2 S.E. 1/4 SECTION 23 T. 2 N. R. 38 E. B. M.

U N P L A T T E D



LEGEND & NOTES

- 5/8" x 30" Steel Re-bar set with plastic cap stamped L.S. 8795
- 1/2" x 24" Steel Re-bar set with plastic cap stamped L.S. 8795
- 5/8" Steel Re-bar found with caps stamped L.S. 722
- 1/2" Steel Re-bar found with caps stamped L.S. 722

A 15' foot wide Utility Easement is hereby granted along all road frontages within each lot.
 All other easements are eight feet wide unless otherwise noted.

First American Title Company
 Idaho Falls, Idaho 83404

This sketch is made solely for the purpose of assisting in locating the premises. The company assumes no liability for alleged loss or damage which may result from reliance on this map.



DIV. NO. 9
 1st AMENDED
 CENTENNIAL
 BLOCK 8-S
 11-31 E.
 694.00
 31
 BLOCK RANCH
 4-
 30
 43
 44
 29
 28