

CENTENNIAL RANCH

Division No. 12

An Addition to The City of Idaho Falls
Bonneville County, Idaho

in the W. 1/4 S.E. 1/4 Section 23 T.2N. R.38E. B.M.

STATE R-O-W BRASS CAP
N. 1/4 CORNER SEC. 23
T.2N. R.38E. B.M.
CP&F BY L.S. 827
INST. NO. 952530

FOUND 1991 3" ALUMINUM CAP
W. 1/4 CORNER SEC. 23
T.2N. R.38E. B.M.
CP&F BY L.S. 760
INST. NO. 821879

SET 5/8" I.R. W/ ALUMINUM CAP
CENTER 1/4 SECTION 23
T.2N. R.38E. B.M.
CP&F BY L.S. 8252
INST. NO. 1063205

UNPLATTED

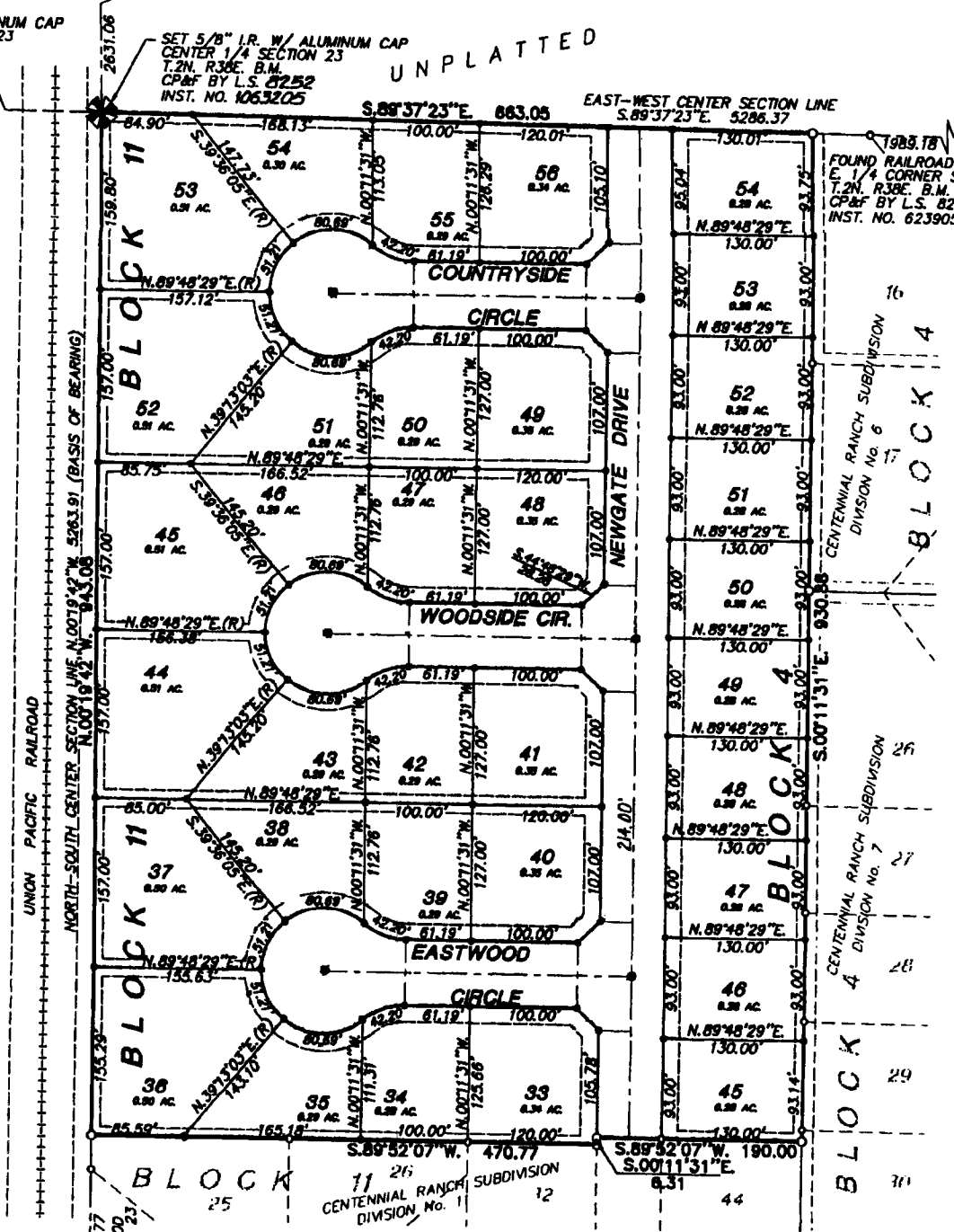
EAST-WEST CENTER SECTION LINE
S.89°37'23"E. 5286.37

FOUND RAILROAD SPIKE
E. 1/4 CORNER SEC. 23
T.2N. R.38E. B.M.
CP&F BY L.S. 827
INST. NO. 623905

UNPLATTED



UNPLATTED



First American Title Company

Idaho Falls, Idaho 83404

This sketch is made solely for the purpose of assisting in locating the premises. The company assumes no liability for alleged loss or damage which may result from reliance on this map.

