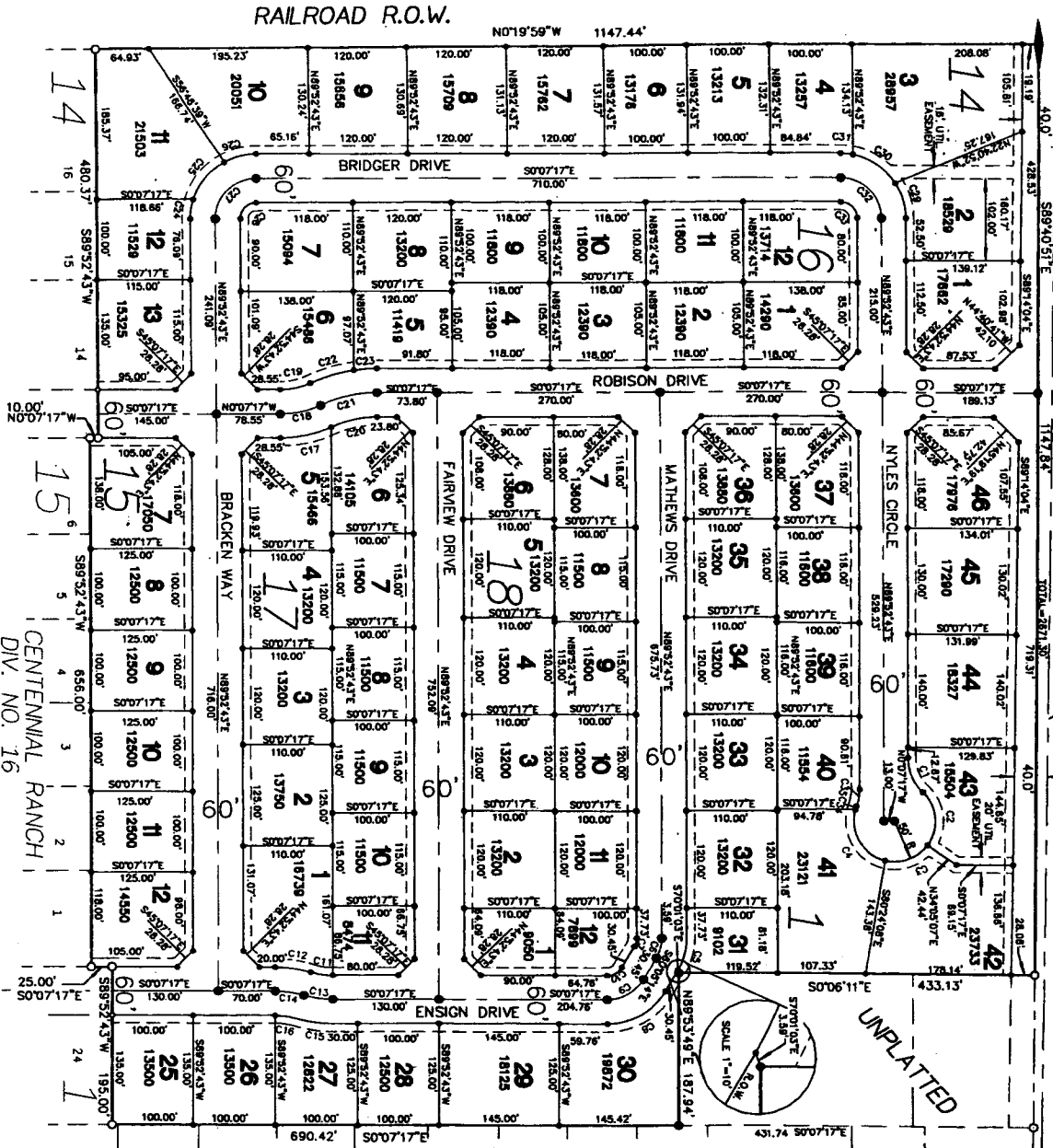
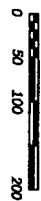


CENTENNIAL RANCH

DIVISION NO. 15
 AN ADDITION TO THE
 CITY OF AMYON, BONNEVILLE COUNTY, IDAHO
 PART OF THE NE 1/4 OF SECTION 23, T. 2 N., R. 38 E.B.M.

North 1/4 Corner
 Sec. 23, T. 2 N.
 R. 38 E.B.M.
 (Int. No. 952530)

CRIMSON DR
 E 1ST ST
 CLOVERDALE ESTATES
 CENTER LINE OF ROAD-S89°14'04"E
 LADINO DR



UNPLATTED

CENTENNIAL RANCH
 DIV. NO. 1

CENTENNIAL RANCH
 DIV. NO. 2

Northwest Corner
 Sec. 23, T. 2 N.
 R. 38 E.B.M.
 (Int. No. 819189)

NOTES

- 1. A lot of 1/4 acre and 1/2 acre...
- 2. A lot of 1/4 acre and 1/2 acre...
- 3. A lot of 1/4 acre and 1/2 acre...
- 4. A lot of 1/4 acre and 1/2 acre...
- 5. A lot of 1/4 acre and 1/2 acre...
- 6. A lot of 1/4 acre and 1/2 acre...
- 7. A lot of 1/4 acre and 1/2 acre...
- 8. A lot of 1/4 acre and 1/2 acre...
- 9. A lot of 1/4 acre and 1/2 acre...
- 10. A lot of 1/4 acre and 1/2 acre...
- 11. A lot of 1/4 acre and 1/2 acre...
- 12. A lot of 1/4 acre and 1/2 acre...
- 13. A lot of 1/4 acre and 1/2 acre...
- 14. A lot of 1/4 acre and 1/2 acre...
- 15. A lot of 1/4 acre and 1/2 acre...
- 16. A lot of 1/4 acre and 1/2 acre...
- 17. A lot of 1/4 acre and 1/2 acre...
- 18. A lot of 1/4 acre and 1/2 acre...
- 19. A lot of 1/4 acre and 1/2 acre...
- 20. A lot of 1/4 acre and 1/2 acre...
- 21. A lot of 1/4 acre and 1/2 acre...
- 22. A lot of 1/4 acre and 1/2 acre...
- 23. A lot of 1/4 acre and 1/2 acre...
- 24. A lot of 1/4 acre and 1/2 acre...
- 25. A lot of 1/4 acre and 1/2 acre...
- 26. A lot of 1/4 acre and 1/2 acre...
- 27. A lot of 1/4 acre and 1/2 acre...
- 28. A lot of 1/4 acre and 1/2 acre...
- 29. A lot of 1/4 acre and 1/2 acre...
- 30. A lot of 1/4 acre and 1/2 acre...
- 31. A lot of 1/4 acre and 1/2 acre...
- 32. A lot of 1/4 acre and 1/2 acre...
- 33. A lot of 1/4 acre and 1/2 acre...
- 34. A lot of 1/4 acre and 1/2 acre...
- 35. A lot of 1/4 acre and 1/2 acre...
- 36. A lot of 1/4 acre and 1/2 acre...
- 37. A lot of 1/4 acre and 1/2 acre...
- 38. A lot of 1/4 acre and 1/2 acre...
- 39. A lot of 1/4 acre and 1/2 acre...
- 40. A lot of 1/4 acre and 1/2 acre...
- 41. A lot of 1/4 acre and 1/2 acre...
- 42. A lot of 1/4 acre and 1/2 acre...
- 43. A lot of 1/4 acre and 1/2 acre...
- 44. A lot of 1/4 acre and 1/2 acre...
- 45. A lot of 1/4 acre and 1/2 acre...
- 46. A lot of 1/4 acre and 1/2 acre...

CURVE DATA

NO.	BEARING	LENGTH	RADIUS	BEARING	CHORD
C1	S89°52'43"W	118.00'	118.00'	S00°00'00"E	118.00'
C2	S00°00'00"E	118.00'	118.00'	S89°52'43"W	118.00'
C3	S89°52'43"W	118.00'	118.00'	S00°00'00"E	118.00'
C4	S00°00'00"E	118.00'	118.00'	S89°52'43"W	118.00'
C5	S89°52'43"W	118.00'	118.00'	S00°00'00"E	118.00'
C6	S00°00'00"E	118.00'	118.00'	S89°52'43"W	118.00'
C7	S89°52'43"W	118.00'	118.00'	S00°00'00"E	118.00'
C8	S00°00'00"E	118.00'	118.00'	S89°52'43"W	118.00'
C9	S89°52'43"W	118.00'	118.00'	S00°00'00"E	118.00'
C10	S00°00'00"E	118.00'	118.00'	S89°52'43"W	118.00'
C11	S89°52'43"W	118.00'	118.00'	S00°00'00"E	118.00'
C12	S00°00'00"E	118.00'	118.00'	S89°52'43"W	118.00'
C13	S89°52'43"W	118.00'	118.00'	S00°00'00"E	118.00'
C14	S00°00'00"E	118.00'	118.00'	S89°52'43"W	118.00'
C15	S89°52'43"W	118.00'	118.00'	S00°00'00"E	118.00'
C16	S00°00'00"E	118.00'	118.00'	S89°52'43"W	118.00'
C17	S89°52'43"W	118.00'	118.00'	S00°00'00"E	118.00'
C18	S00°00'00"E	118.00'	118.00'	S89°52'43"W	118.00'
C19	S89°52'43"W	118.00'	118.00'	S00°00'00"E	118.00'
C20	S00°00'00"E	118.00'	118.00'	S89°52'43"W	118.00'
C21	S89°52'43"W	118.00'	118.00'	S00°00'00"E	118.00'
C22	S00°00'00"E	118.00'	118.00'	S89°52'43"W	118.00'
C23	S89°52'43"W	118.00'	118.00'	S00°00'00"E	118.00'
C24	S00°00'00"E	118.00'	118.00'	S89°52'43"W	118.00'
C25	S89°52'43"W	118.00'	118.00'	S00°00'00"E	118.00'
C26	S00°00'00"E	118.00'	118.00'	S89°52'43"W	118.00'
C27	S89°52'43"W	118.00'	118.00'	S00°00'00"E	118.00'
C28	S00°00'00"E	118.00'	118.00'	S89°52'43"W	118.00'
C29	S89°52'43"W	118.00'	118.00'	S00°00'00"E	118.00'
C30	S00°00'00"E	118.00'	118.00'	S89°52'43"W	118.00'
C31	S89°52'43"W	118.00'	118.00'	S00°00'00"E	118.00'
C32	S00°00'00"E	118.00'	118.00'	S89°52'43"W	118.00'
C33	S89°52'43"W	118.00'	118.00'	S00°00'00"E	118.00'
C34	S00°00'00"E	118.00'	118.00'	S89°52'43"W	118.00'
C35	S89°52'43"W	118.00'	118.00'	S00°00'00"E	118.00'

BASE OF BEARER CITY OF DAVID FILLS