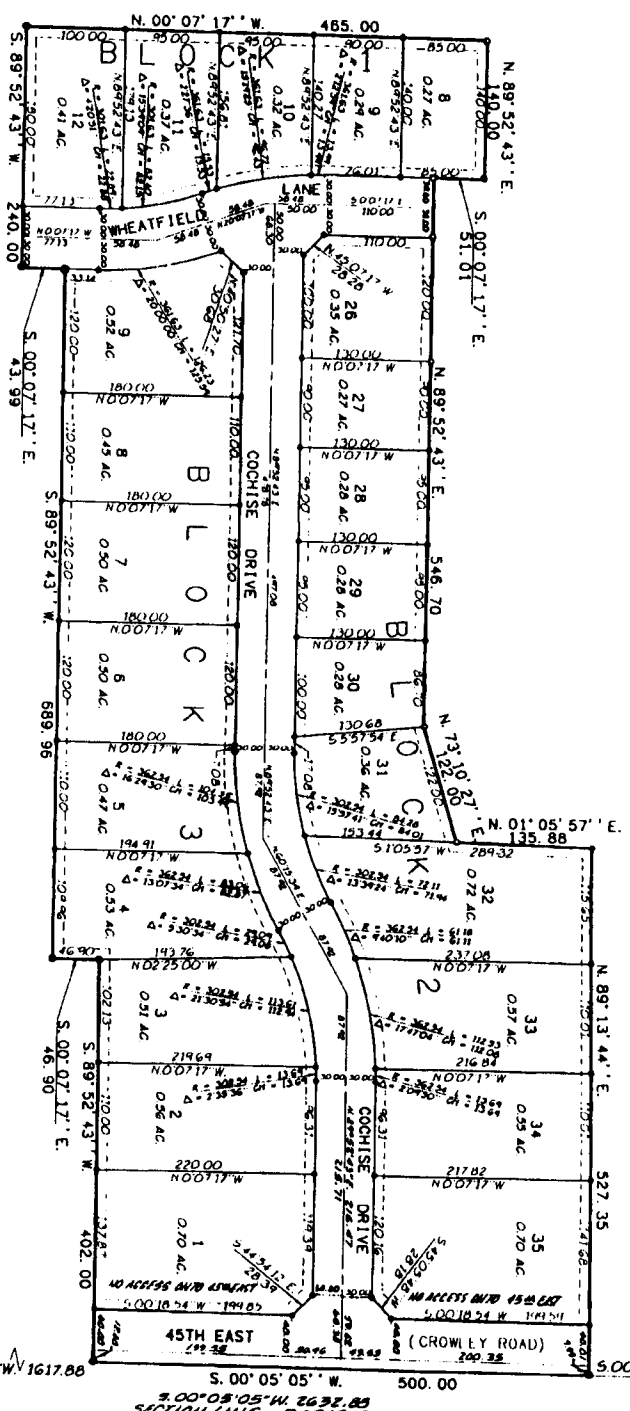


# CENTENNIAL RANCH

## DIVISION NO. 2

### PART OF THE E. 1/2 NE. 1/4 SECTION 29 T.2 N.R. 98 E.B.M. BONNEVILLE COUNTY, IDAHO

NE SECTION CORNER SEC. 23  
T.2N. R.38 E.B.M.  
C.P. + F. BY L.S. 927  
INST. NO. 619168



E. 1/4 CORNER SEC. 23 -  
T.2N. R.38 E.B.M.  
C.P. + F. BY L.S. 927  
INST. NO. 623905

#### LEGEND & NOTES

- 5/8" 1-30" Steel Rebar set with plastic cap stamped L.S. 827
  - 1/2" 1-24" Steel Rebar set with plastic cap stamped L.S. 827
  - 5/8" Steel Rebar (found with caps stamped L.S. 827)
  - 1/2" Steel Rebar (found with caps stamped L.S. 827)
- Utility easements are not here shown otherwise noted.

The County and all other roads were constructed in County Standards and officially accepted.

Private driveway easements will be constructed as shown on the approved preliminary drawings on file in the office of the County Engineer and drainage studies shall be maintained (not shown on this plat) are included in a separate district and will be accepted by the operator and maintenance.



**First American Title Company**  
Lubbock Falls, Idaho 83404

This sketch is made solely for the purpose of assisting in locating the premises. The company assumes no liability for alleged loss or damage which may result from reliance on this map.