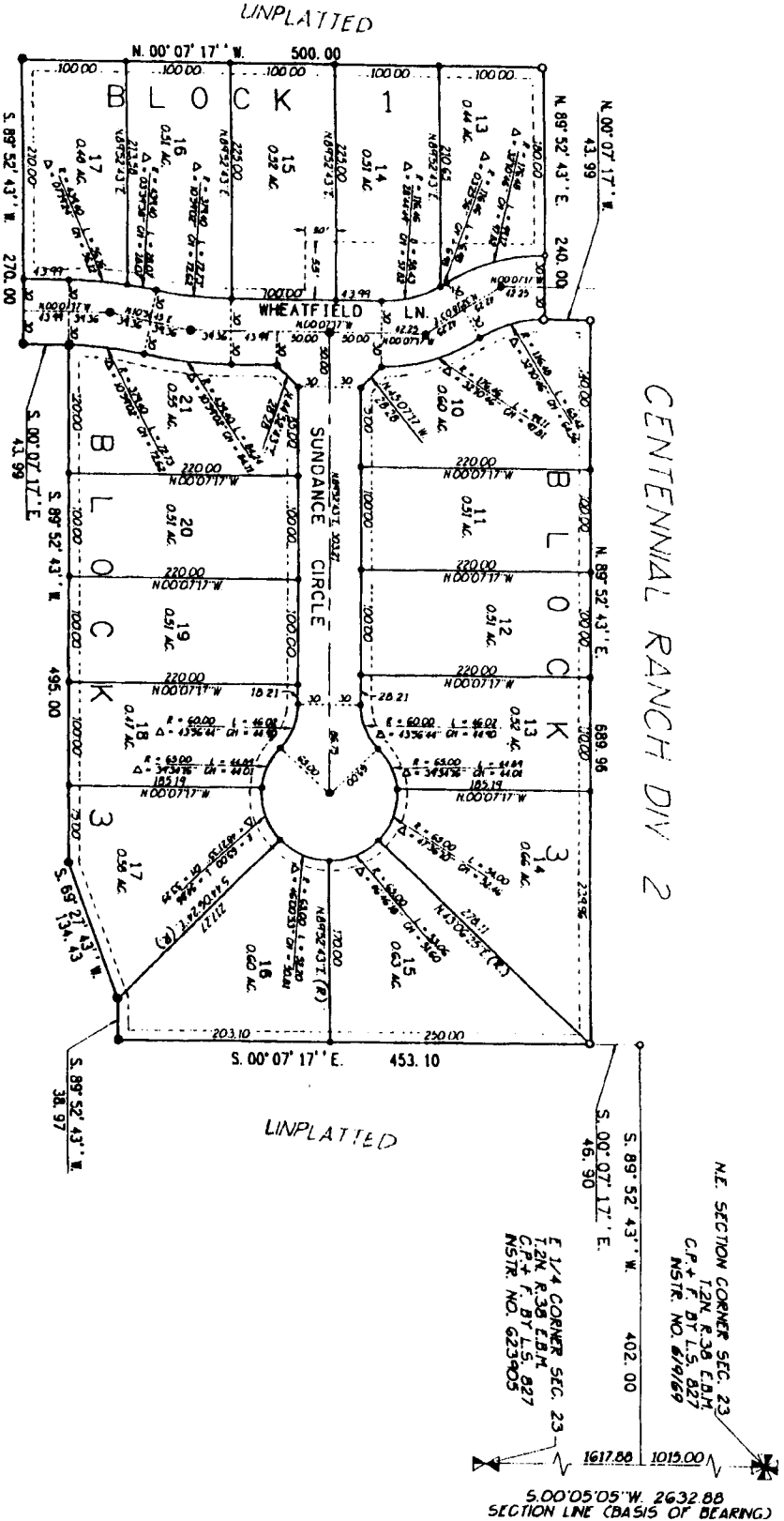


# CENTENNIAL RANCH

## DIVISION NO. 3

### BONNEVILLE COUNTY, IDAHO

PART OF THE E. 1/2 SECTION 23 T.2 N.R. 38 E.B.M.



UNPLATTED

**First American Title Company**  
 Idaho Falls, Idaho 83404

This sketch is made solely for the purpose of assisting in locating the premises. The company assumes no liability for alleged loss or damage which may result from reliance on this map.



**LEGEND & NOTES**

- 5/8" x 3/8" Steel Re-bar set with plastic cap stamped L.S. 827
  - 1/2" x 2 1/2" Steel Re-bar set with plastic cap stamped L.S. 827
  - 5/8" Steel Re-bar found with cap stamped L.S. 827
  - 1/2" Steel Re-bar found with cap stamped \_\_\_\_\_
- (Only assessments are for feet unless otherwise noted.)
- The Company will not maintain roads and constructed to County Standards and officially accepted.
- Platting drawings prepared and be constructed as shown on the approved engineering drawings on file in the office of the County Engineer and drainage services shall be maintained.
- Lot shown on this plat are included in a lighting district and will be assessed for the operation and maintenance.

CENTENNIAL RANCH DIV 2

N.E. SECTION CORNER SEC. 23  
 T.2N. R.38 E.B.M.  
 C.P. + F. BY L.S. 827  
 INSTR. NO. 819169

E. 1/4 CORNER SEC. 23  
 T.2N. R.38 E.B.M.  
 C.P. + F. BY L.S. 827  
 INSTR. NO. 623905

5.00°05'05"W 2632.88  
 SECTION LINE (BASIS OF BEARING)

