

CENTENNIAL RANCH

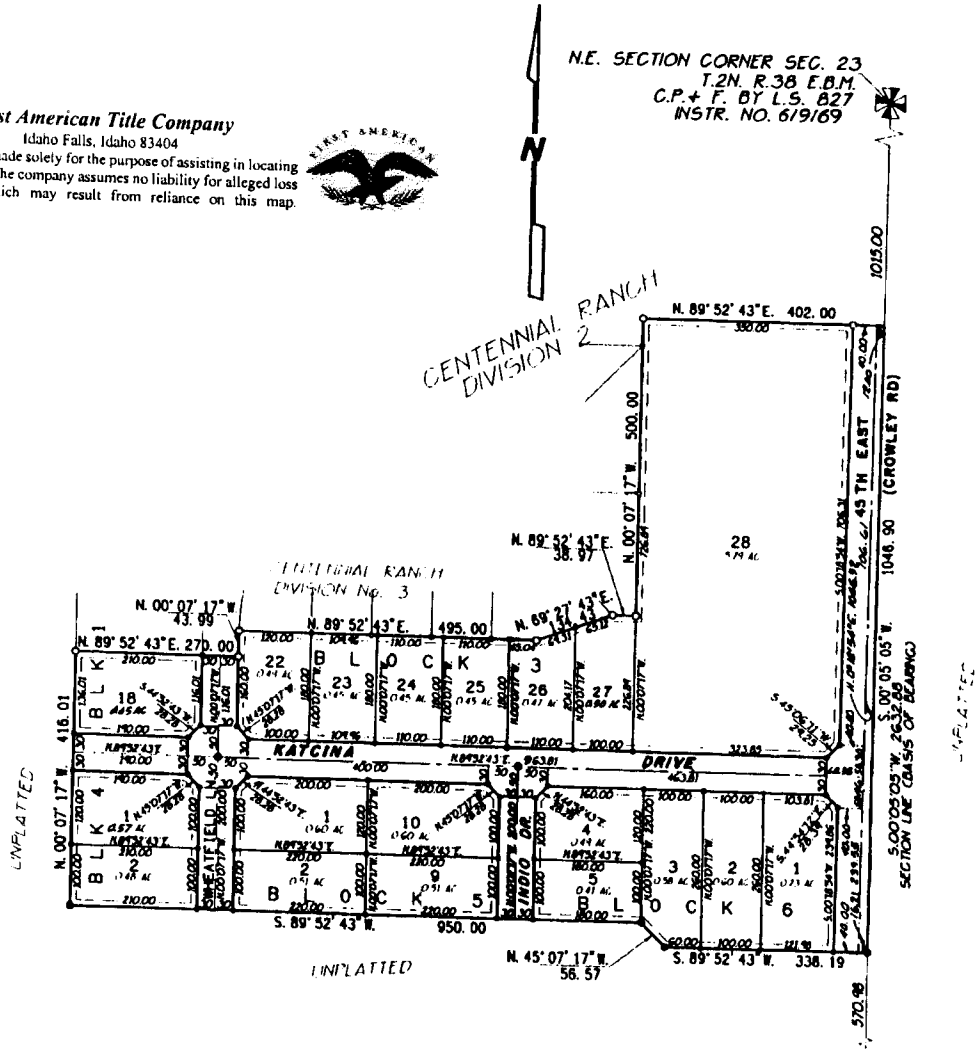
DIVISION NO. 4

BONNEVILLE COUNTY, IDAHO

PART OF THE E. 1/2 N.E. 1/4 SECTION 23 T.2 N.R. 38 E.B.M.

First American Title Company
 Idaho Falls, Idaho 83404

This sketch is made solely for the purpose of assisting in locating the premises. The company assumes no liability for alleged loss or damage which may result from reliance on this map.



LEGEND & NOTES

- 5/8" x 30" Steel Re-bar set with plastic cap stamped L.S.827
 - 1/2" x 24" Steel Re-bar set with plastic cap stamped L.S.827
 - 5/8" Steel Re-bar found with caps stamped L.S. 827
 - 1/2" Steel Re-bar found with caps stamped L.S. 827
- ==== Utility easements are ten feet wide unless otherwise noted.
- The County will not maintain roads until constructed to County Standards and officially accepted.
- Private driveway approaches will be constructed as shown on the approved improvement drawings on file in the office of the County Engineer and drainage swales shall be maintained.
- Lots shown on this plat are included in a lighting district and will be assessed for the operation and maintenance.
- Access from Lot 1, Block 6 and Lot 28, Block 3 onto 45th East IS **NOT ALLOWED** except via 6th South - KATCINA DRIVE

E 1/4 CORNER SEC. 23
 T.2N. R.38 E.B.M.
 C.P. + F. BY L.S. 827
 INSTR. NO. 623905