

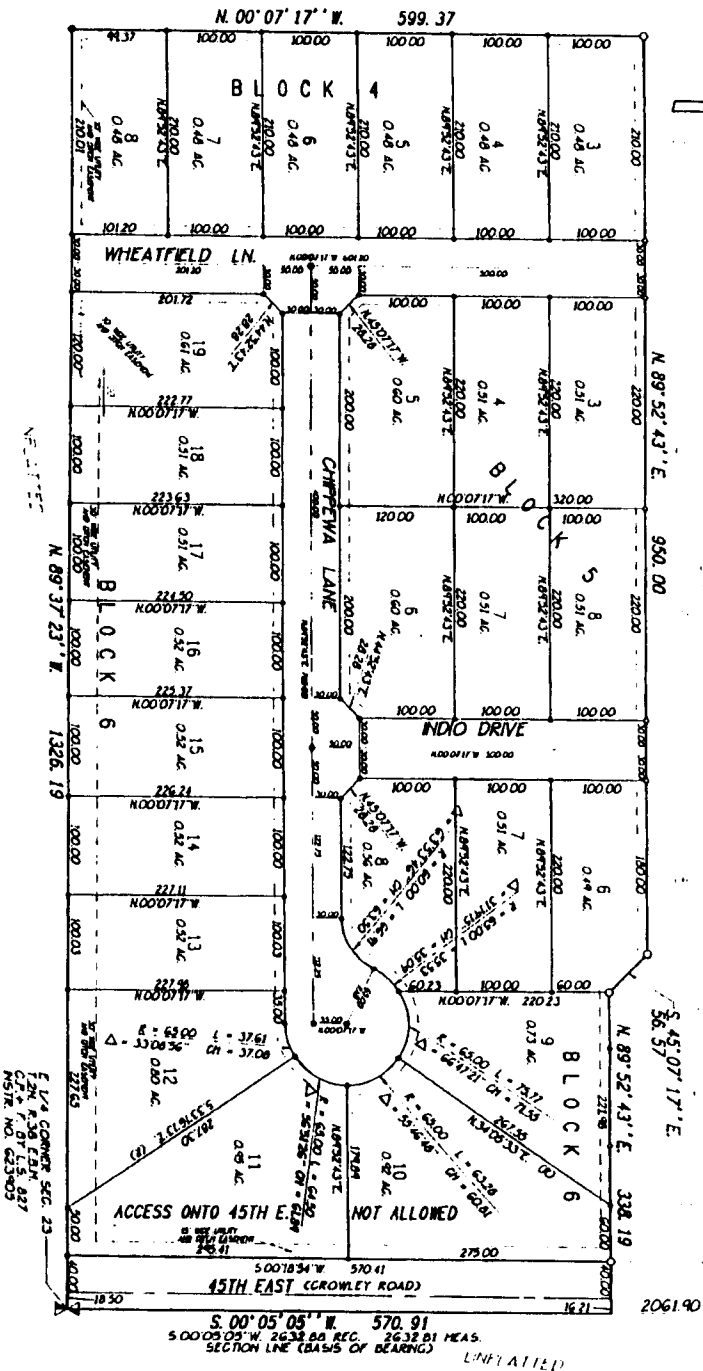
CENTENNIAL RANCH

DIVISION NO. 5

BONNEVILLE COUNTY, IDAHO

PART OF THE E 1/2 NE 1/4 SECTION 23 T.2 N.R. 38 E.B.M.

N 1/4 SECTION CORNER SEC. 23
 T.2 N. R. 38 E. B.M. 827
 N.B.M. NO. 481195



LEGEND & NOTES

- 3/4" 1" 3/4" Stand Above for each block case stamped L.A. 1775
- 1/2" 1" 2" Stand Above for each block case stamped L.A. 1775
- 3/4" Stand Above stand with case stamped 427
- 1/2" Stand Above stand with case stamped 427

Utility easements are not here made unless otherwise noted.

The County and our division were and continued to County Statutes and officially approved.

Private drainage easements and its continuation as shown on the attached engineering drawings are the sole property of the County Engineer and drainage easements shall be maintained.

Let's advise on this plat are included in a lighting district and will be assessed for the operation and maintenance.

Access ways of feet from lots 10 and 11 is **NOT ALLOWED**

First American Title Company
 Idaho Falls, Idaho 83404

This sketch is made solely for the purpose of assisting in locating the premises. The company assumes no liability for alleged loss or damage which may result from reliance on this map.

