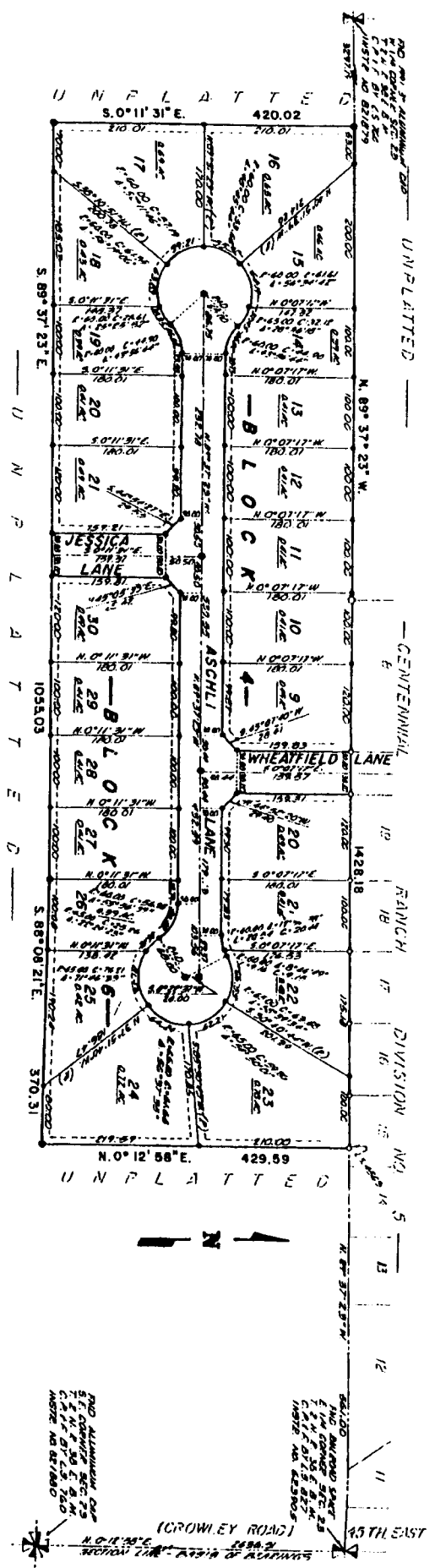


CENTENNIAL RANCH DIVISION NO. 6 BONNEVILLE COUNTY, IDAHO BEING PART OF THE N. 1/2 S.E. 1/4 SECTION 23, T. 2 N., R. 38 E., B.M.



This sketch is made solely for the purpose of assisting in locating the premises. The company assumes no liability for alleged loss or damage which may result from reliance on this map.



First American Title Company
Idaho Falls, Idaho 83404

LEGEND & NOTES

- 5/8" x 3/4" Steel Stake set with plate and stamped L.S. 8785
 - 1/2" x 3/4" Steel Stake set with plate and stamped L.S. 8785
 - 5/8" Steel Stake found with stamp stamped L.S. 8785
 - 1/2" Steel Stake found with stamp stamped L.S. 8785
 - 1/2" Steel Stake found with stamp stamped L.S. 8785
- Utility easements per the last valid survey instrument.
- The Company and its agents have not investigated the County Records and Official Records. Any other questions and be contacted or persons on the ground representative directly on file at the office of the County Engineer and drawings made shall be returned.
- Lot 29 shown on this plat are included in a Spring district and will be assessed for the purposes and purposes.