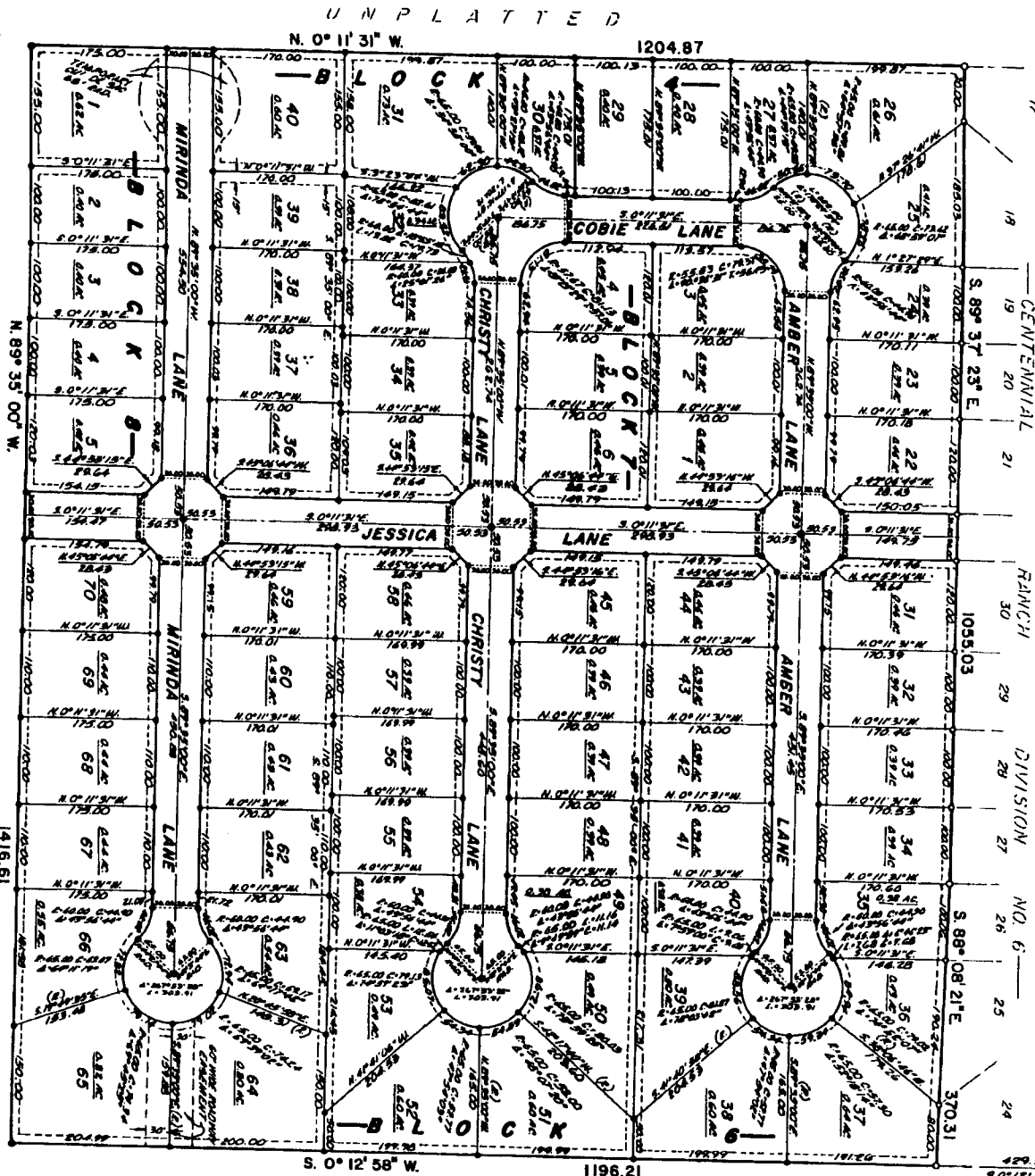


# CENTENNIAL RANCH DIVISION NO. 7

AN ADDITION TO THE CITY OF AMMON,  
BONNEVILLE COUNTY, IDAHO

BEING PART OF THE S.E. 1/4 OF SECTION 23, T. 2 N., R. 39 E., B. M.



### LEGEND & NOTES

- 5/8\"
  - 1/2\"
  - 5/8\"
  - 1/2\"
- ALL DIMENSIONS ARE IN FEET UNLESS OTHERWISE SPECIFIED.  
THESE DIMENSIONS ARE TO BE MEASURED TO THE CENTER OF THE CURVE UNLESS OTHERWISE SPECIFIED.  
ALL DIMENSIONS ARE TO BE MEASURED TO THE CENTER OF THE CURVE UNLESS OTHERWISE SPECIFIED.

### First American Tile Company

Idaho Falls, Idaho 83404  
This sketch is made solely for the purpose of assisting in locating the premises. The company assumes no liability for alleged loss or damage which may result from reliance on this map.



UNPLATTED

UNPLATTED