

FIRST AMENDED PLAT OF CENTENNIAL RANCH DIVISION NO. 9

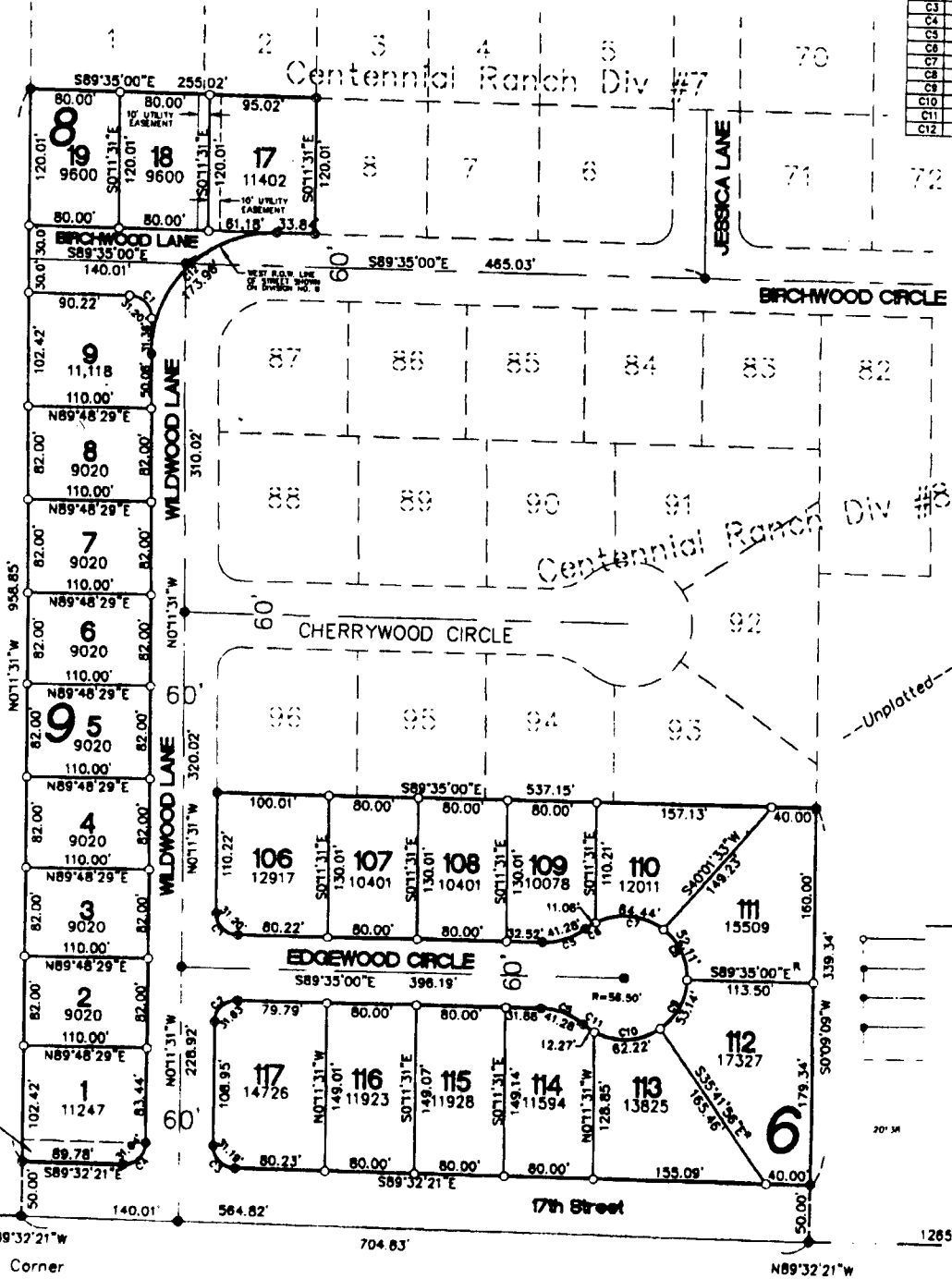
CITY OF AMMON, BONNEVILLE COUNTY, IDAHO

PART OF THE SE 1/4 OF SECTION 23, T. 2 N., R. 38 E.B.M.

BEING A REPLAT OF LOTS 97 THRU 105, BLOCK 6 AND LOTS 14 THRU 16, BLOCK 8, CENTENNIAL RANCH, DIVISION NO. 9 AND LOTS 9 THRU 13, BLOCK 8, CENTENNIAL RANCH, DIVISION NO. 8

NUM	DELTA	LENGTH	RADIUS	CHORD
C1	89°23'28"	31.20'	20.00'	28.13'
C2	90°36'31"	31.63'	20.00'	28.43'
C3	89°20'30"	31.19'	20.00'	28.12'
C4	90°39'10"	31.84'	20.00'	28.45'
C5	39°25'03"	41.28'	80.00'	40.47'
C6	117°3'12"	11.08'	56.50'	11.05'
C7	65°21'03"	64.44'	56.50'	61.01'
C8	52°50'48"	52.11'	56.50'	50.28'
C9	53°30'44"	52.14'	56.50'	51.20'
C10	63°05'46"	62.22'	56.50'	58.12'
C11	122°8'14"	12.27'	56.50'	12.24'
C12	80°36'31"	173.80'	110.00'	156.39'

First American Title Company
Idaho Falls, Idaho 83404
This sketch is made solely for the purpose of assisting in locating the premises. The company assumes no liability for alleged loss or damage which may result from reliance on this map.



- NOTES**
- indicates a 1/2" x 24" iron rod placed with a yellow plastic cap marked L.S. 722
 - indicates a 1/2" iron rod found with a yellow plastic cap marked L.S. 722
 - indicates a 3/8" iron rod placed with a yellow plastic cap marked L.S. 722
 - indicates a 3/8" iron rod found with a yellow plastic cap marked L.S. 722
 - utility and drainage easements are 6' wide, each lot unless otherwise shown
 - - - a 10' wide utility easement is reserved along the street side of all lots
 - 20' sq indicates lot area in square feet

South One-Quarter Corner
Sec. 23 T.2 N.
R. 38 E.B.M.
(Inst. No. 952531)

Southeast Cor
Sec. 23 T.2 N.
R. 38 E.B.M.
(Inst. No. 82)