

# CENTENNIAL RANCH

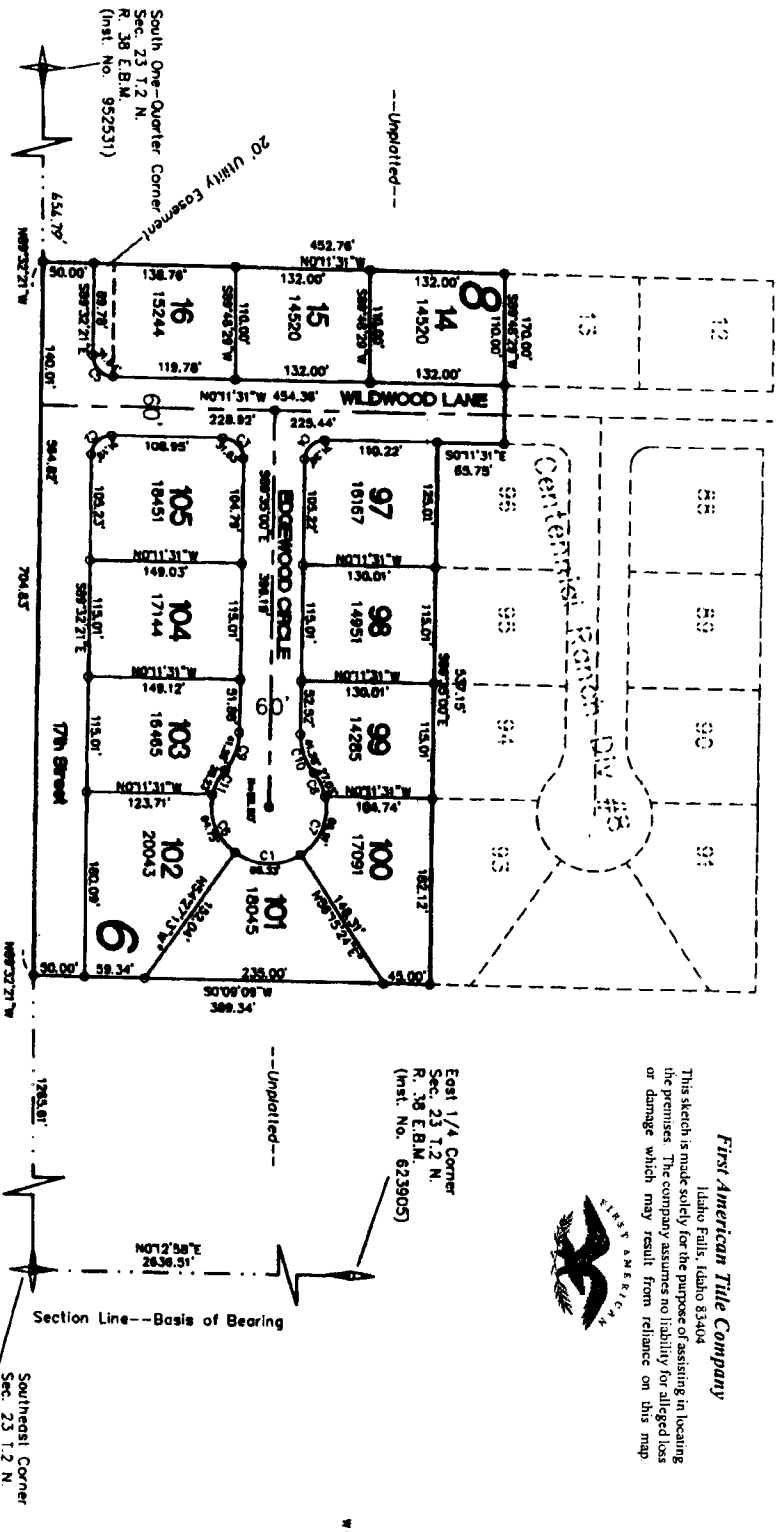
## DIVISION NO. 9

### CITY OF AMMON, BONNEVILLE COUNTY, IDAHO

PART OF THE SE 1/4 OF SECTION 23 T. 2 N. R. 38 E.B.M.

**First American Title Company**  
 Idaho Falls, Idaho 83404

This sketch is made solely for the purpose of assisting in locating the premises. The company assumes no liability for alleged loss or damage which may result from reliance on this map.



### NOTES

- Indicates a 1/2" x 24" iron rod placed with a yellow plastic cap marked L.S. 722
- Indicates a 1/2" x 24" iron rod found with a yellow plastic cap marked L.S. 722
- Indicates a 5/8" x 30" iron rod placed with a yellow plastic cap marked L.S. 722
- Indicates a 5/8" x 30" iron rod found with a yellow plastic cap marked L.S. 722
- Utility and drainage easements are 8' (they each fit within subdivided areas)
- 10' wide utility easement
- is reserved along the street side of all lots.
- Indicates lot area in square feet.

NUM.	DELTA	ARC	RADIUS	BEARING	CHORD
C1	8977.23"	68.33°	56.50'	N07°4'05"E	64.24'
C2	8970.50"	31.19°	20.00'	S44°51'56"E	28.12'
C3	9036.31"	31.63°	20.00'	S45°06'45"W	28.43'
C4	8973.29"	31.20°	20.00'	S44°53'16"E	28.13'
C5	9039.10"	31.64°	20.00'	N45°08'04"E	28.44'
C6	6539.40"	64.75°	56.50'	N68°22'37"E	61.26'
C7	6750.53"	66.91°	56.50'	N67°40'02"W	63.06'
C8	2724.37"	27.03°	56.50'	S64°42'13"W	26.77'
C9	3925.05"	41.28°	60.00'	N69°52'27"W	40.47'
C10	3925.05"	41.28°	60.00'	N70°42'27"E	40.47'
C11	2837.39"	28.23°	56.50'	S64°28'44"E	27.94'

No direct access will be shown onto 17th Street.