

CHAFFIN ADDITION

DIVISION NO. 2 TO THE
CITY OF IDAHO FALLS, IDAHO

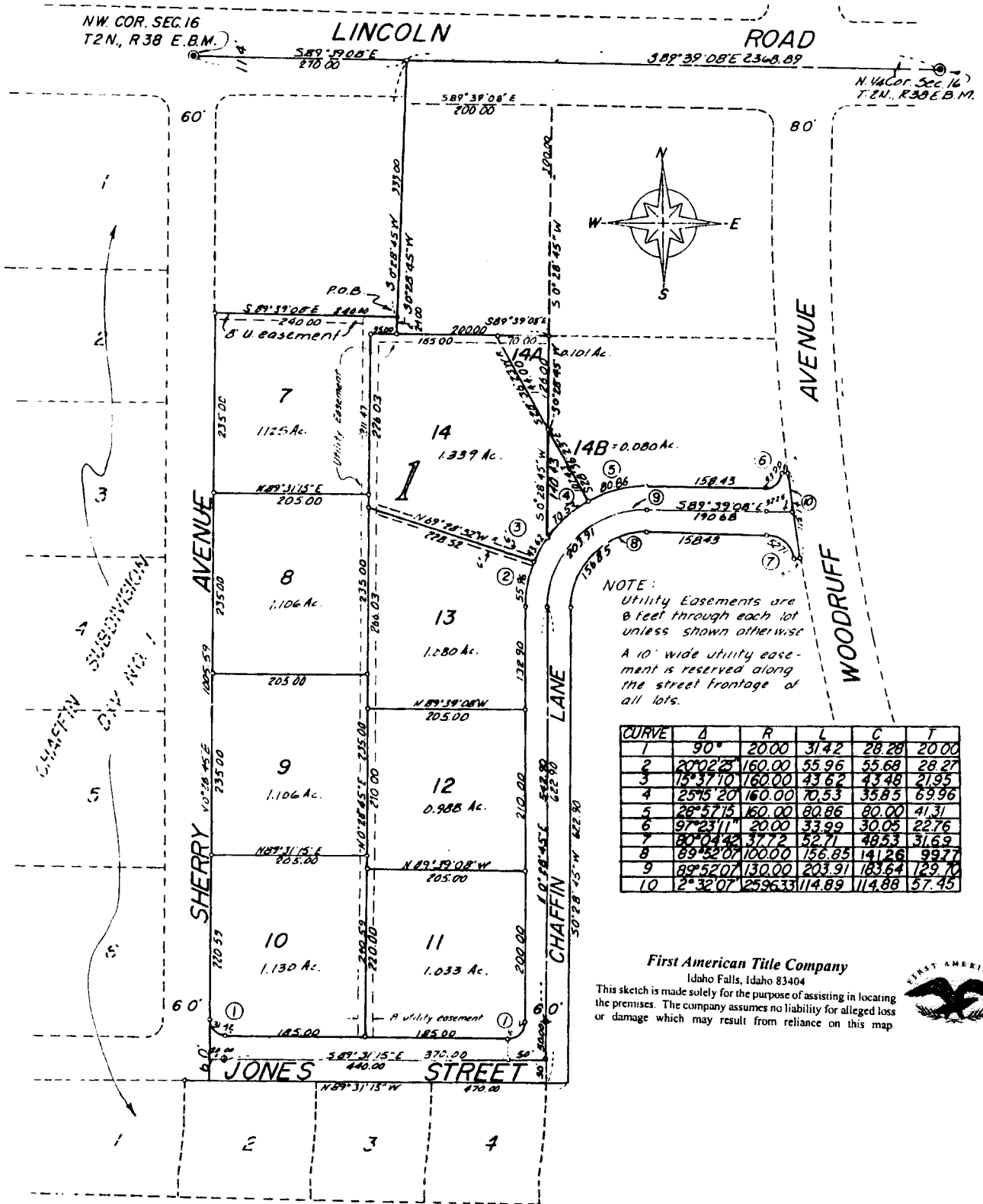
WHICH INCLUDES THE

1st AMMENDED PLAT OF LOTS 2 THRU 6,
BLOCK 1 OF CHAFFIN ADDITION DIV. NO. 1

BONNEVILLE COUNTY, IDAHO

PART OF THE N.E. 1/4 SEC. 16 T.2N., R.38 E.B.M.

SCALE 1"=100'



NOTE:
Utility Easements are
8 feet through each lot
unless shown otherwise.
A 10' wide utility ease-
ment is reserved along
the street frontage of
all lots.

CURVE	A	R	L	C	T
1	90°	20.00	31.42	28.28	20.00
2	207°2'23"	160.00	55.96	55.68	28.27
3	15°37'10"	160.00	43.62	43.48	21.95
4	25°15'20"	160.00	70.53	35.85	69.96
5	28°57'15"	160.00	80.86	80.00	41.31
6	97°23'11"	20.00	33.99	30.05	22.76
7	80°04'42"	37.72	52.71	48.53	31.69
8	89°52'07"	100.00	156.85	141.26	99.77
9	89°52'07"	130.00	203.91	183.64	129.70
10	2°32'07"	2596.33	114.89	114.88	57.45

First American Title Company
Idaho Falls, Idaho 83404

This sketch is made solely for the purpose of assisting in locating the premises. The company assumes no liability for alleged loss or damage which may result from reliance on this map.

