

This sketch is made solely for the purpose of assisting in locating the premises. The company assumes no liability for alleged loss or damage which may result from reliance on this map.



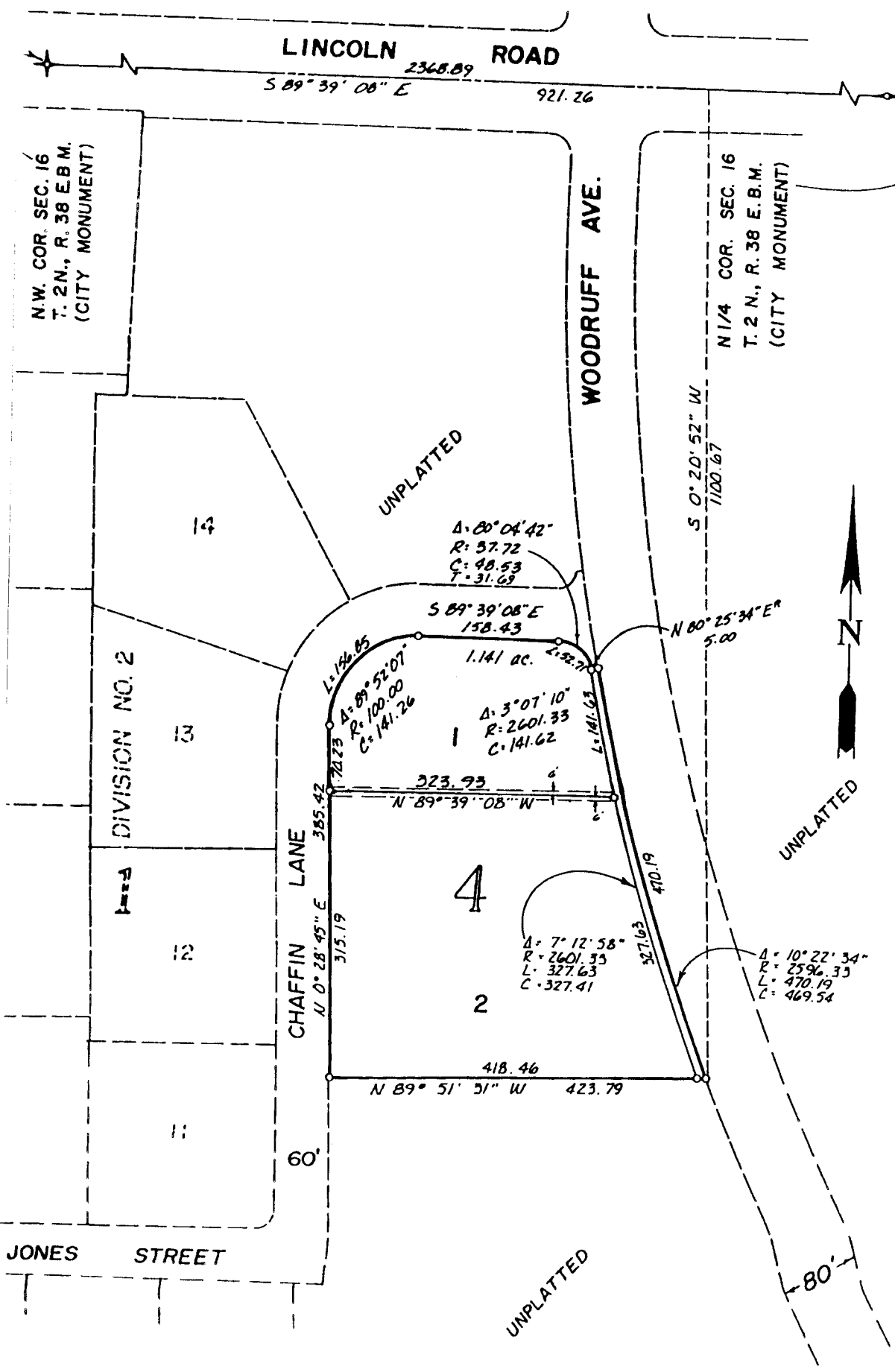
First American Title Company
 Idaho Falls, Idaho 83404

CHAFFIN ADDITION

DIVISION NO. 3

TO THE CITY OF IDAHO FALLS, IDAHO

PART OF THE N.W. 1/4, SEC. 16, T. 2 N., R. 38 E. B.M.



N.W. COR. SEC. 16
 T. 2 N., R. 38 E. B.M.
 (CITY MONUMENT)

N 1/4 COR. SEC. 16
 T. 2 N., R. 38 E. B.M.
 (CITY MONUMENT)

DIVISION NO. 2

CHAFFIN LANE

WOODRUFF AVE.

JONES STREET