

# CHAFFIN ADDITION DIVISION NO. 7

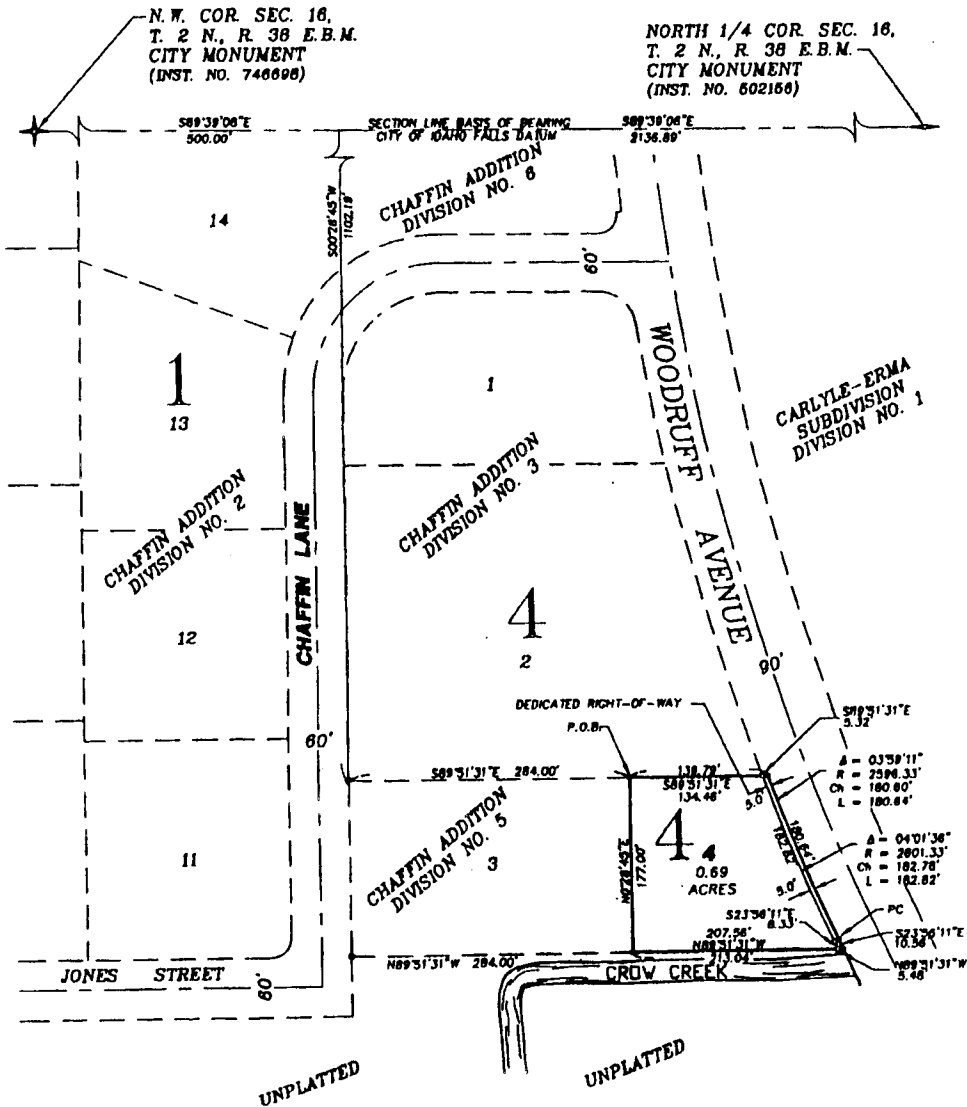
TO THE CITY OF IDAHO FALLS, BONNEVILLE COUNTY, IDAHO  
PART OF THE WEST 1/2 OF THE WEST 1/2 OF SECTION 16, T. 2 N., R. 38 E.B.M.




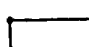

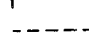

First American Title Company

Idaho Falls, Idaho 83404

This sketch is made solely for the purpose of assisting in locating the premises. The company assumes no liability for alleged loss or damage which may result from reliance on this map.



## NOTES

-  indicates a 1/2" x 24" iron rod placed with a yellow plastic cap marked L.S. 722.
-  indicates a 1/2" x 24" iron rod found with a yellow plastic cap marked L.S. 722.
-  indicates a 5/8" x 30" iron rod placed with a yellow plastic cap marked L.S. 722.
-  utility easements are 8' through each lot unless otherwise shown.
-  a 10' wide utility easement is reserved along the street side of all lots.