

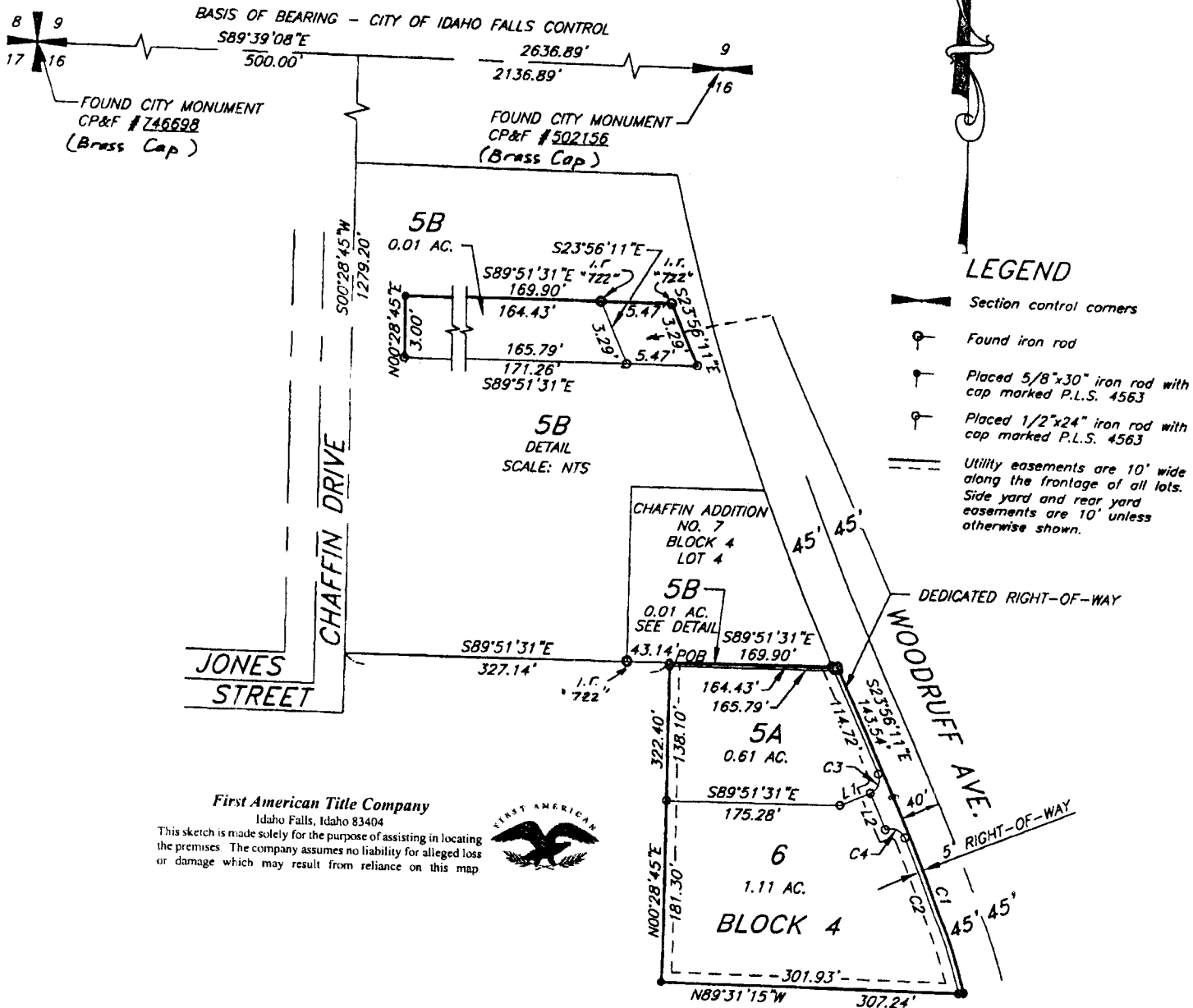
CHAFFIN ADDITION

DIVISION NO. 9

AN ADDITION TO THE CITY OF IDAHO FALLS, BONNEVILLE COUNTY, IDAHO
PART OF THE SECTION 16, T. 2 N., R. 38 E., B.M.

LINE TABLE		
LINE	LENGTH	BEARING
L1	33.37	N66°13'13"E
L2	40.00	N23°32'33"W

CURVE TABLE						
CURVE	LENGTH	RADIUS	DELTA	TANGENT	CHORD B	CHORD
C1	207.95	2505.86	4°45'17"	104.03	N21°33'33"W	207.89
C2	163.26	2500.86	3°44'26"	81.66	N21°05'34"W	163.24
C3	23.60	15.00	90°09'24"	15.04	N21°08'31"E	21.24
C4	23.78	15.00	90°49'00"	15.22	N68°22'17"W	21.36



First American Title Company
Idaho Falls, Idaho 83404
This sketch is made solely for the purpose of assisting in locating the premises. The company assumes no liability for alleged loss or damage which may result from reliance on this map.



unplatted