

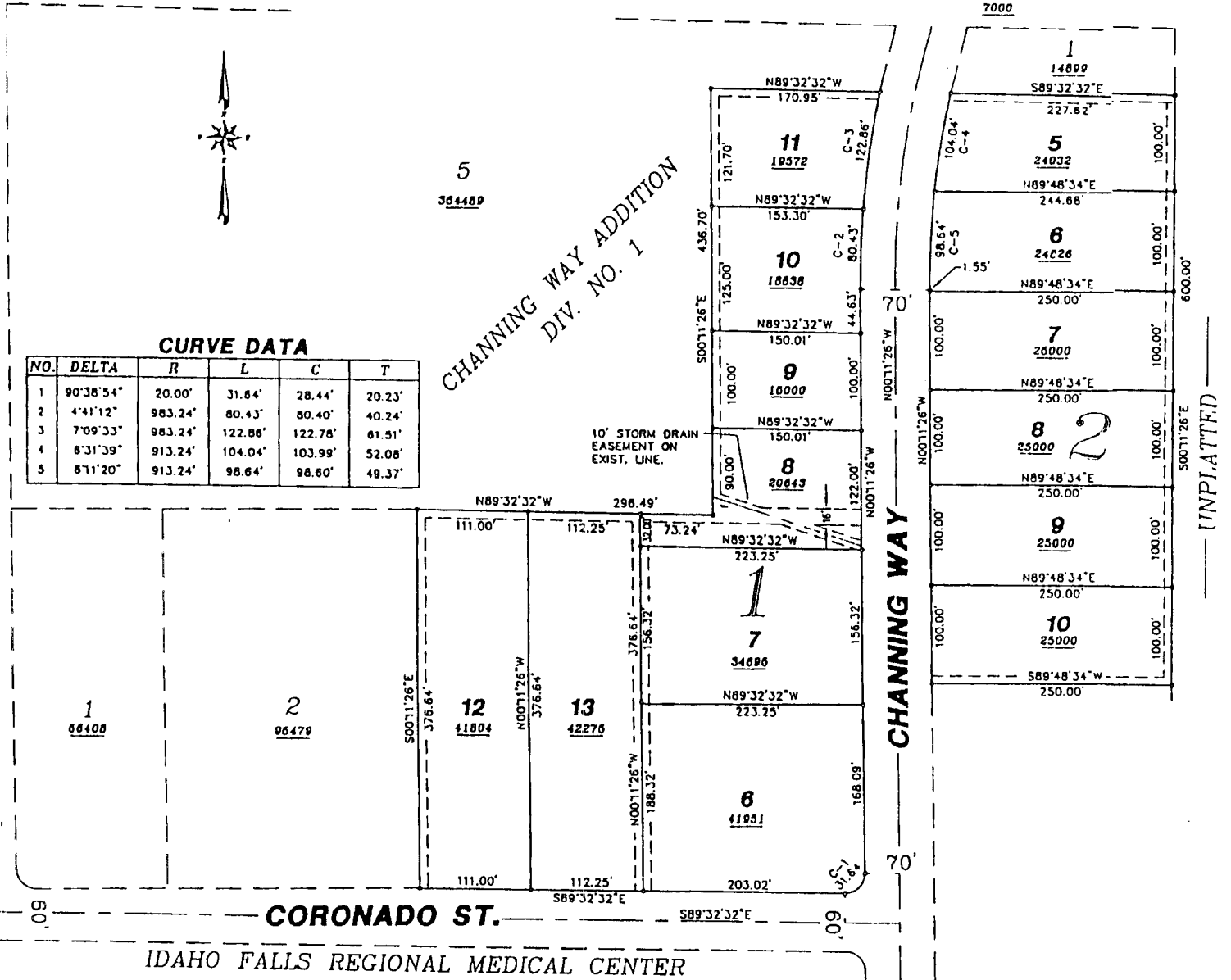
FIRST AMENDED PLAT OF LOTS 3 & 4, BLOCK 1
AND LOTS 2, 3 & 4, BLOCK 2

CHANNING WAY ADDITION

DIVISION NO. 1

TO THE CITY OF IDAHO FALLS, IDAHO

PART OF THE SOUTHEAST 1/4 OF SECTION 28, T. 2 N., R. 38 E.B.M.



NOTES

- indicates a 1/2" x 24" iron rod placed with a plastic cap marked L.S. 722.
- - - utility easements are 8' thru each lot unless oth shown.
- a 10' wide utility easement is reserved along the side of all lots.
- indicates lot area in square feet.

First American Title Company

Idaho Falls, Idaho 83404

This sketch is made solely for the purpose of assisting in locating the premises. The company assumes no liability for alleged loss or damage which may result from reliance on this map.

