

CHANNING WAY ADDITION DIVISION NO. 2

TO THE CITY OF IDAHO FALLS, BONNEVILLE COUNTY, IDAHO
BEING PART OF THE S.E. 1/4, SECTION 28, T. 2 N., R. 38 E., B.M., WHICH INCLUDES A
REPLAT OF PART OF LOT 1, BLOCK 2, H.C.A. ADDITION, CITY OF IDAHO FALLS, IDAHO

CHANNING WAY ADD.
DIV. NO. 1 AMENDED

NOTES

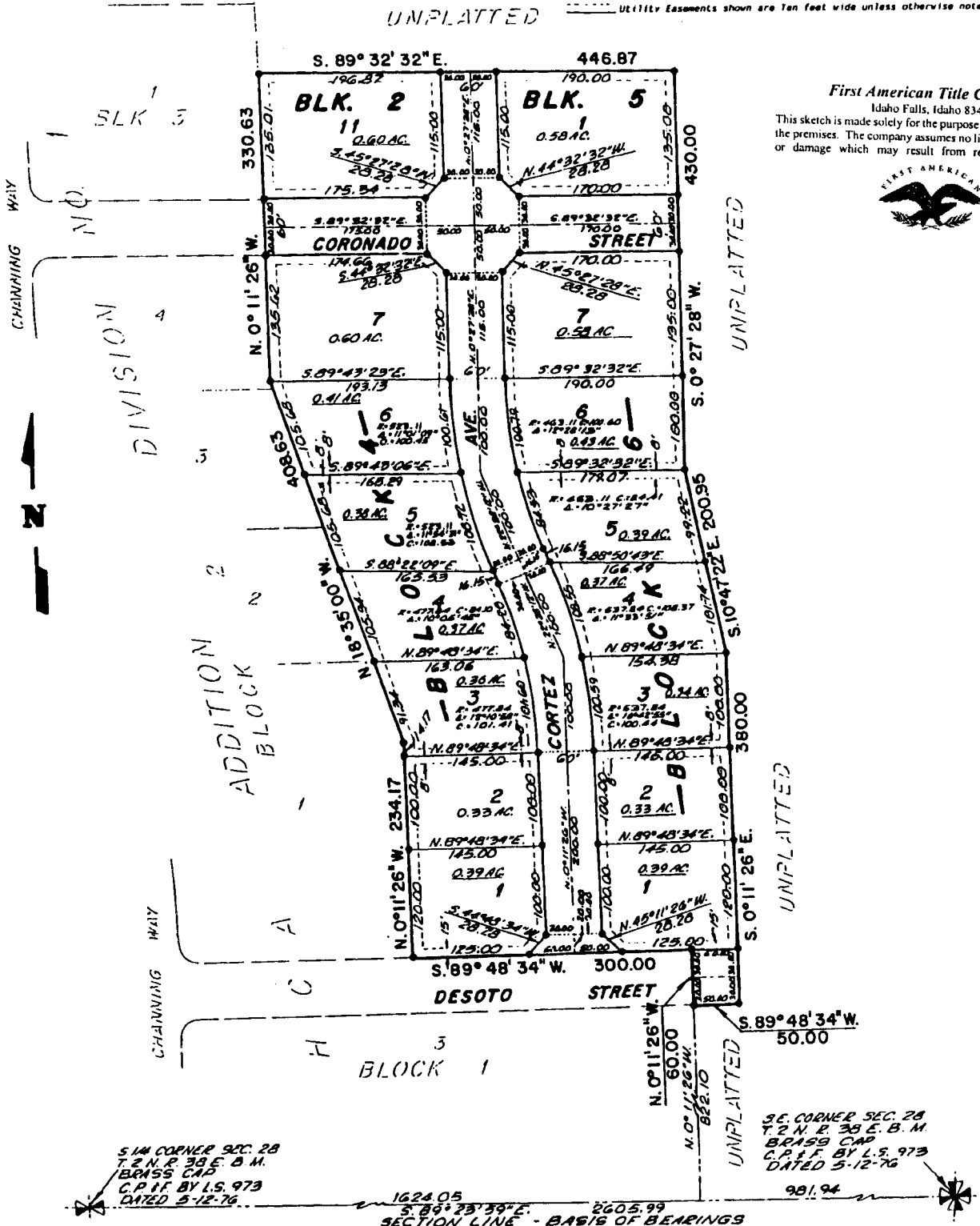
- Denotes 1/2" x 24" steel re-bar set with plastic cap, stamped L.S. 827
- Utility Easements shown are ten feet wide unless otherwise noted.

UNPLATTED

First American Title Company

Idaho Falls, Idaho 83404

This sketch is made solely for the purpose of assisting in locating the premises. The company assumes no liability for alleged loss or damage which may result from reliance on this map



S.W. CORNER SEC. 28
T. 2 N. R. 38 E. B.M.
BRASS CAP
C.P. & F. BY L.S. 973
DATED 5-12-76

S.E. CORNER SEC. 28
T. 2 N. R. 38 E. B.M.
BRASS CAP
C.P. & F. BY L.S. 973
DATED 5-12-76

SECTION LINE - BASIS OF BEARINGS