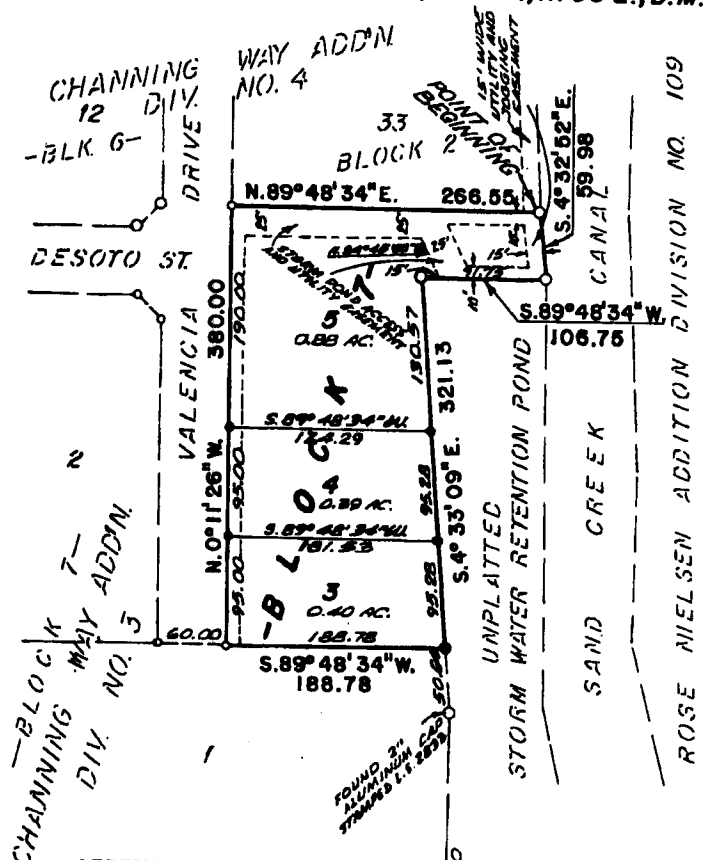


FIRST AMENDED PLAT OF CHANNING WAY ADDITION DIVISION NO. 3

TO THE CITY OF IDAHO FALLS, BONNEVILLE COUNTY, IDAHO
BEING A REPLAT OF A PORTION OF LOT 1 BLOCK 7
IN THE S.E. 1/4, SECTION 28, T. 2 N., R. 38 E., B.M.



First American Title Company
Idaho Falls, Idaho 83404
This sketch is made solely for the purpose of assisting in locating the premises. The company assumes no liability for alleged loss or damage which may result from reliance on this map.



LEGEND & NOTES

- 5/8" x 30" Steel Re-bar set with plastic cap stamped L.S.827
- 5/8" Steel Re-bar found with cap stamped L.S.827
- 1/2" x 24" Steel Re-bar set with plastic cap stamped L.S.827
- 1/2" Steel Re-bar found with cap stamped L.S.827

----- A fifteen foot wide utility easement is hereby granted along Valencia Drive. Other easements widths are as shown.

CITY BRASS CAP
S.W. CORNER SEC. 28
T. 2 N., R. 38 E., B. M.
C.P.F. BY L.S. 973
INSTR. NO. 500235

CITY BRASS CAP
S.E. CORNER SEC. 28
T. 2 N., R. 38 E., B. M.
C.P.F. BY L.S. 973
INSTR. NO. 500234

2070.13
N. 89° 23' 59" W. 2605.99
SECTION LINE - BASIS OF BEARINGS

