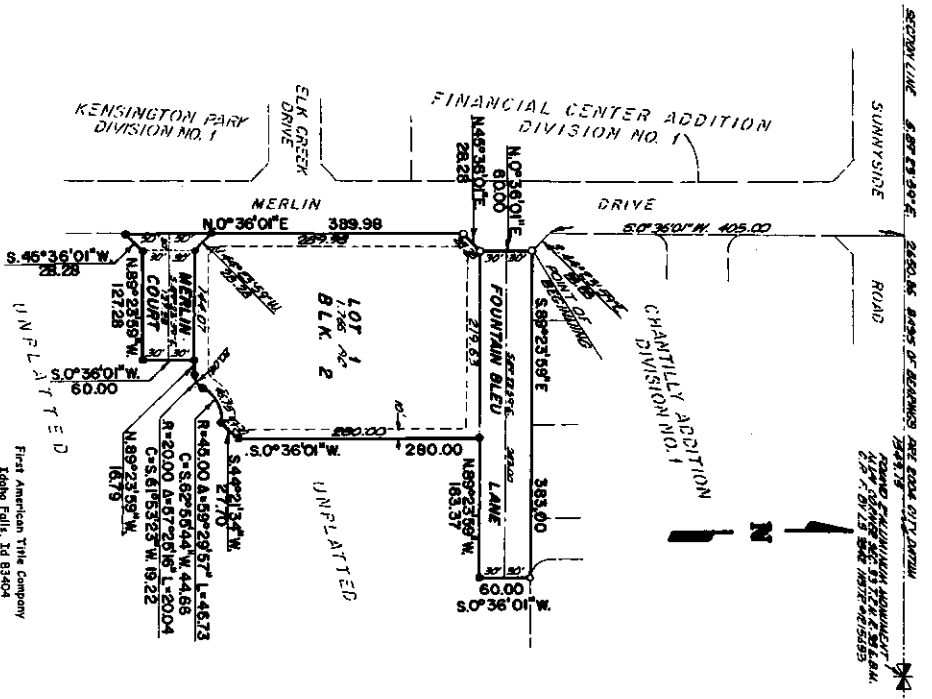


CHANTILLY ADDITION DIVISION NO. 2

TO THE CITY OF IDAHO FALLS, BONNEVILLE COUNTY, IDAHO
BEING PART OF THE N. 1/2 NW. 1/4 SECTION 33 T. 2 N. R. 38 E. B. M.



LEGEND & NOTES

- 5/8" x 3/8" Steel rod set with plastic cap stamped L.S. 8795
- 1/2" x 2" Steel rod set with plastic cap stamped L.S. 8795
- 5/8" Steel rod (found with plastic cap stamped L.S. 8795)
- 1/2" Steel rod (found with plastic cap stamped L.S. 8795)

1/4" = 15 feet with Public Utility Easement to be fully granted along all road frontages. All other easements as shown.

First American Title Company
Idaho Falls, Id 83404

While this is a photographic reproduction of the recorded plat, the company assumes no liability for variations, if any, with a re-survey.