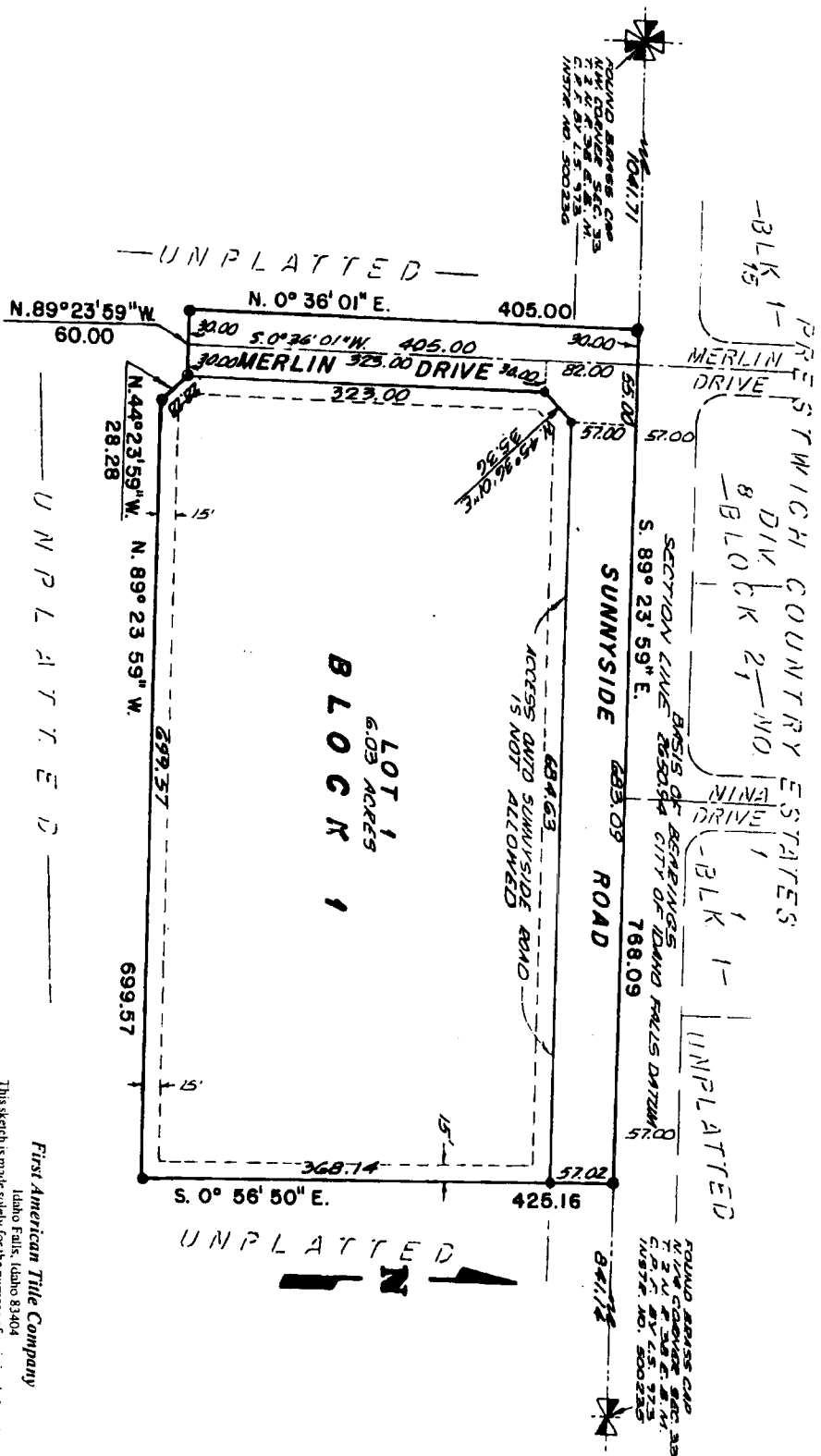


CHANTILLY ADDITION DIVISION NO. 1

TO THE CITY OF IDAHO FALLS, BONNEVILLE COUNTY, IDAHO

BEING PART OF THE N. 1/2 NW 1/4 SECTION 33 T. 2 N. R. 38 E. B. M.



LEGEND & NOTES

- 5/8" x 3/8" Steel Re-bar set with plastic cap stamped L.S. 9735
- 1/2" x 24" Steel Re-bar set with plastic cap stamped L.S. 9735
- 1/2" Steel Re-bar located with plastic cap stamped
- 1/5" Iron wide Utility Easement is hereby granted along all road frontages. All other easement widths are as shown.

First American Title Company
Idaho Falls, Idaho 83404

This sketch is made solely for the purpose of assisting in locating the premises. The company assumes no liability for alleged loss or damage which may result from reliance on this map.

