

ALUMINUM CAP
 N 1/4 COR. SECTION 33
 T 2N. R 30E. E 8E
 L.S. 87-15-8442
 INSTR. NO. 1215655

**THIRD AMENDED PLAT OF
 CHANTILLY PROFESSIONAL PARK**
 PURSUANT TO DAHO CODE, TITLE 66, CHAPTER 16
 CITY OF IDAHO FALLS, BONNEVILLE COUNTY, IDAHO
 LYING IN UNIT 8, CHANTILLY PROFESSIONAL PARK

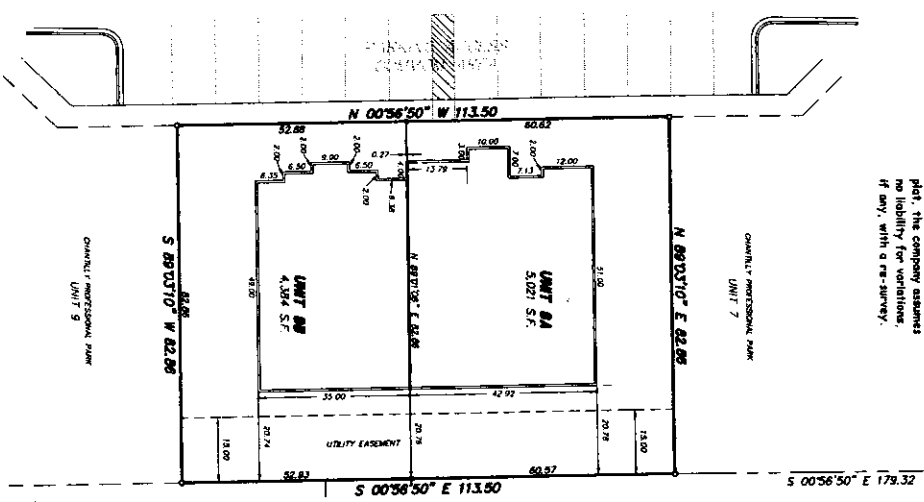
1809.80

S 89°23'39" E 2850.94

841.14

ALUMINUM CAP
 N 1/4 COR. SECTION 33
 T 2N. R 30E. E 8E
 L.S. 87-15-8442
 INSTR. NO. 1215655

First American Title Company
 Idaho Falls, ID 83404
 While this is a photographic
 reproduction of the recorded
 plat, the company assumes
 no liability for variations,
 if any, with a re-survey.



31.04' ST. CLARK STAKES
 DOWN 42'
 1-A
 BLOCK 11-A

UNPLATTED

LEGEND & NOTES

- 1/2" Steel Rebar bound with plastic caps stamped L.S. 8795
 - 1/2" x 24" Steel Rebar set with plastic caps stamped L.S. 8795
 - Utility easements widths are as noted
- Each use consists of the entire property enclosed by the Unit Boundary lines including the land and all improvements thereon, but subject to the covenants, easements, and restrictions and encumbrances set forth in the Declaration of Condominium, Conditions and Restrictions of Chantilly Professional Park.
- For District 7 Health Department approval see Chantilly Addition plat recorded January 25, 2000 under instrument No 1039356