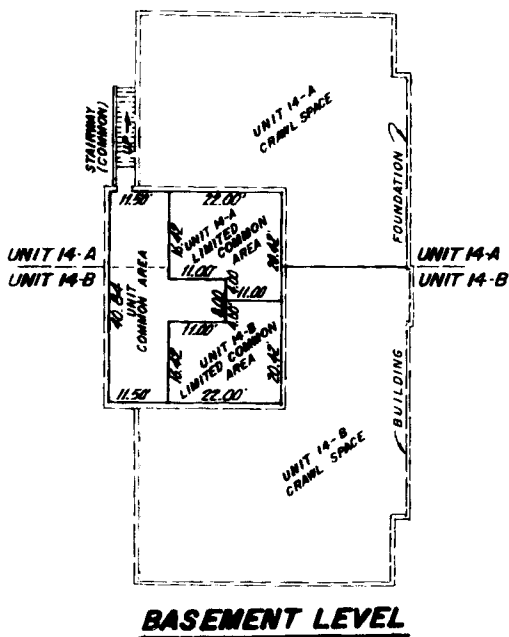


SECOND AMENDED PLAT OF THE CHANTILLY PROFESSIONAL PARK

PURSUANT TO IDAHO CODE, TITLE 55, CHAPTER 15
CITY OF IDAHO FALLS, BONNEVILLE COUNTY, IDAHO



COMMON AREA
LANDSCAPING
PARKING ACCESS

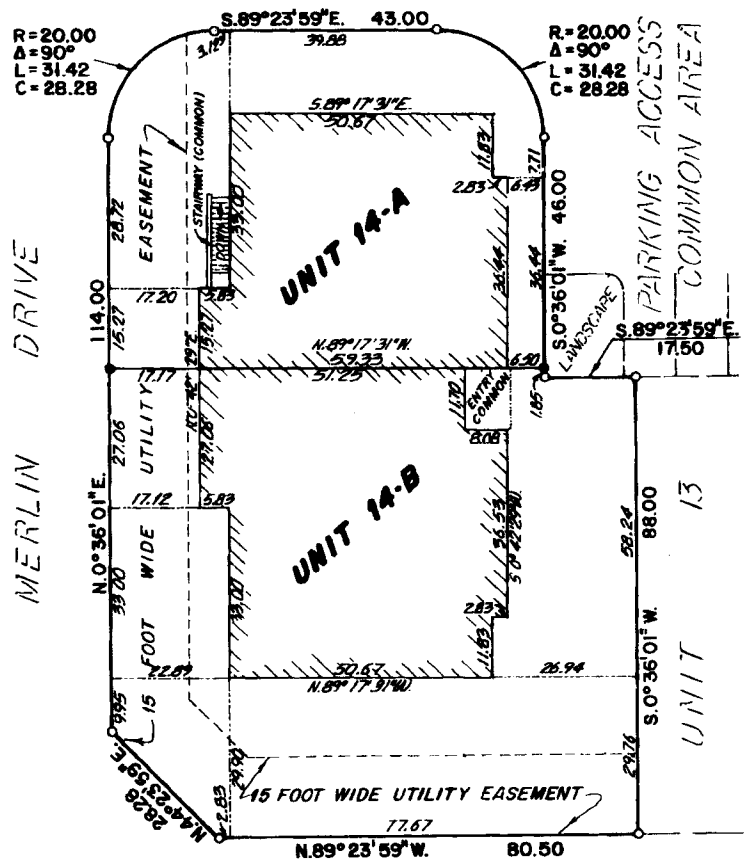
LEGEND & NOTES

- 1/2" Steel rebar found with plastic caps stamped I.S.8795
- 1/2" x 24" Steel rebar set with plastic cap stamped I.S.8795
- Building envelope within each unit
- Unit boundary lines

Each unit consists of the entire property enclosed by the Unit Boundary lines including the land and all improvements thereon except for the entry vestibule, stairway and the basement areas depicted as Common Areas or Limited Common Areas shown in the attached basement level detail and are subject to the covenants, conditions, and restrictions, and easements set forth in the supplemental declaration for maintenance purposes, etc.

For District 7 Health Department approval, see Chantilly Addition plat recorded January 26, 2000 under Instrument No. 1029355.

Bearings of building lines and ties to property lines are either N.0°42'29"E. or S.89°17'31"W.



First American Title Company
Idaho Falls, Idaho 83404
While this is a photographic reproduction of the recorded plat, the Company assumes no liability for variations, if any, with a re-survey.