

CHELSEA COURT

AN ADDITION TO THE CITY OF IDAHO FALLS, BONNEVILLE COUNTY, IDAHO
PART OF SECTION 21, T.2 N., R. 38 E., B.M.

MELBOURNE PARK ADDITION
DIVISION NO. 8



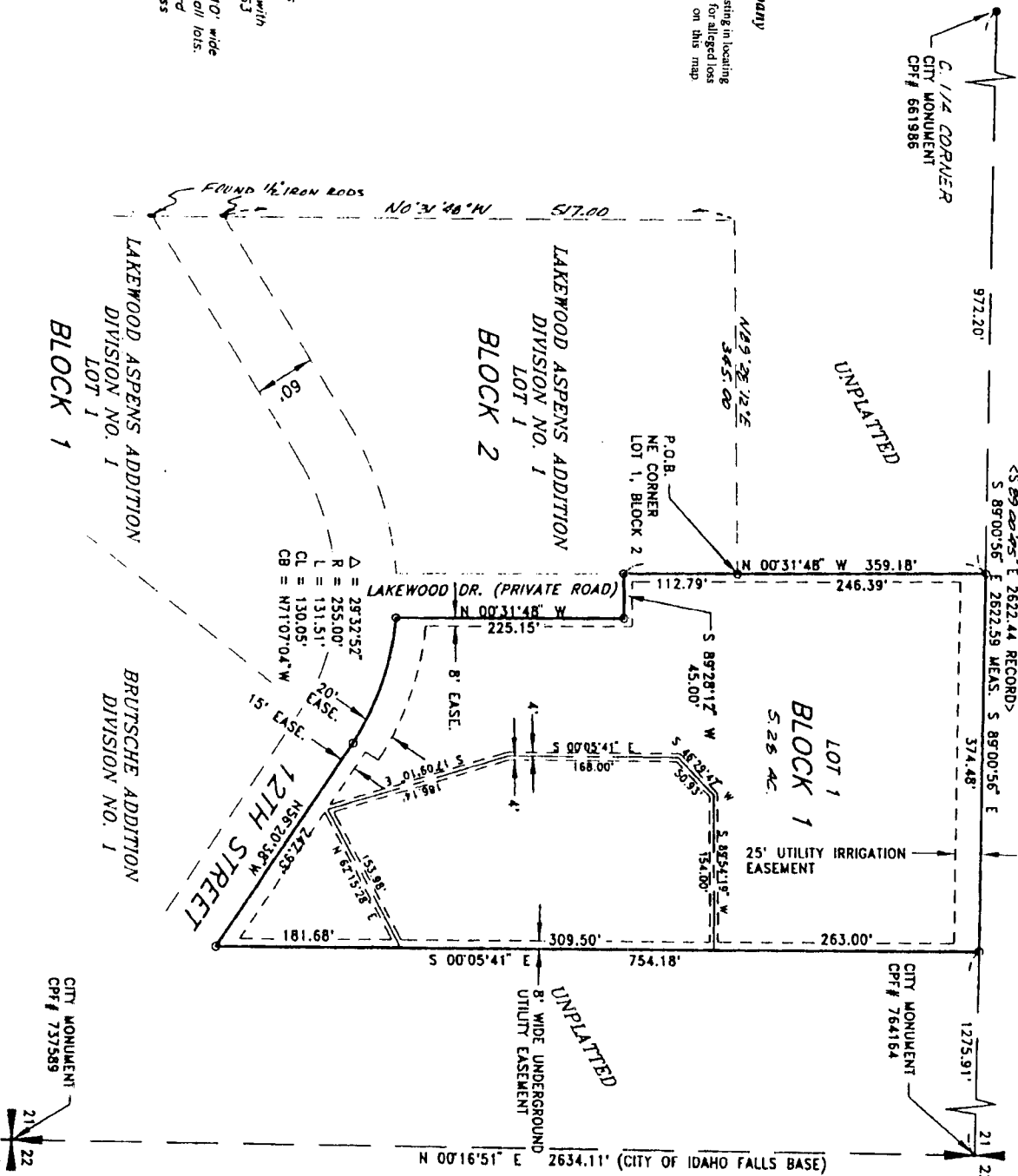
First American Tile Company

Idaho Falls, Idaho 83404
This sketch is made solely for the purpose of assisting in locating the premises. The company assumes no liability for alleged loss or damage which may result from reliance on this map.



- LEGEND**
- Section control corners
 - Placed 5/8" iron rod with cap marked F.L.S. 4563
 - Utility easements are 10' wide along the frontage of all lots. Side yard and rear yard easements are 8' unless otherwise shown.

P.O.B. Point of beginning



CITY MONUMENT
CPF # 737589

