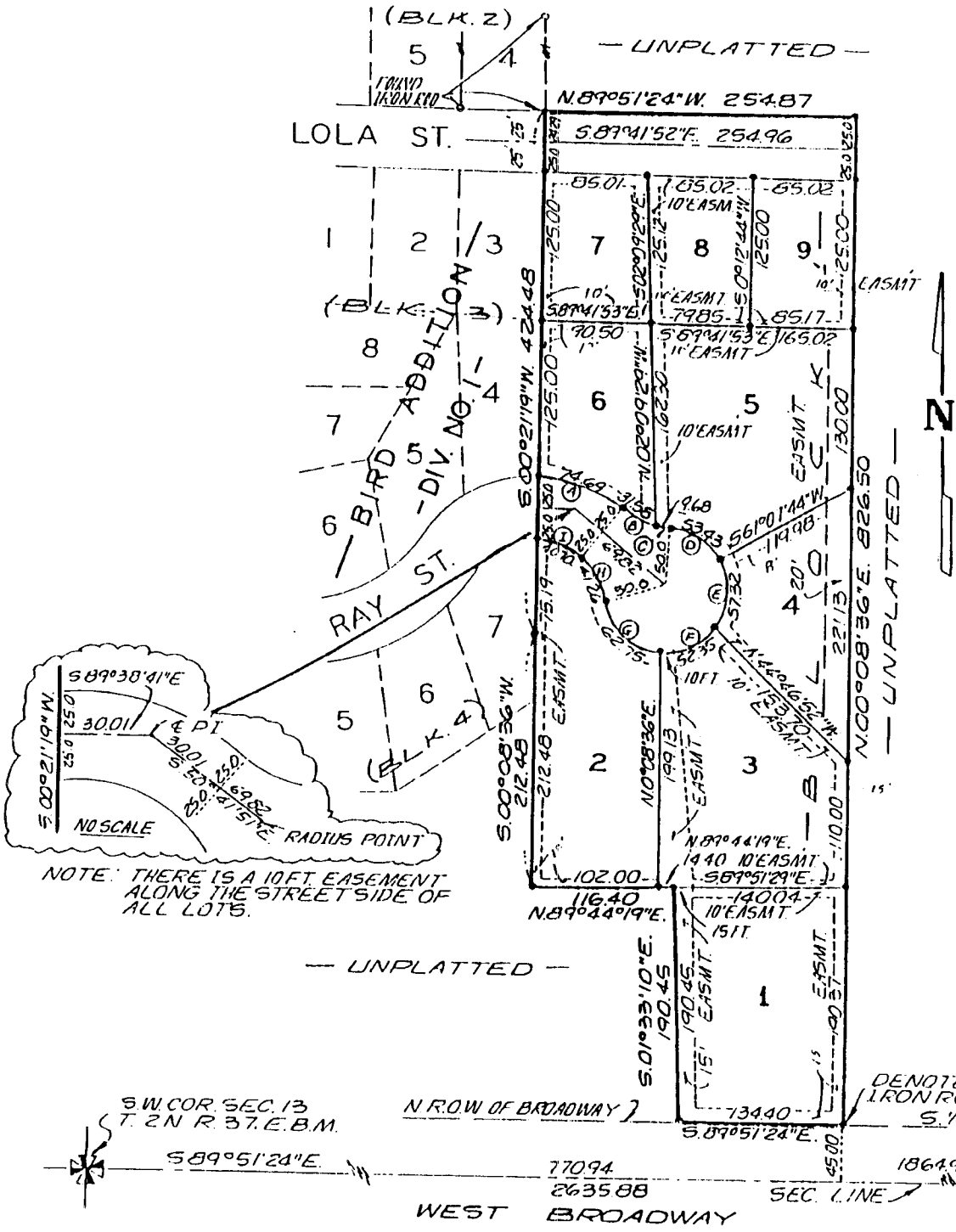


CHERRY ADDITION, DIVISION NO. 1
 AN ADDITION TO THE CITY OF IDAHO FALLS, BONNEVILLE COUNTY, IDAHO
 A PORTION OF THE S.W. 1/4 OF SECTION 13 T.2N. R.37E.B.M.



CURVE TABLE

CURVE LOT NO.	RADIUS	DELTA	ARC	CHORD
4	109.38	38°55'50"	74.59	73.25
5	60.00	30°09'24"	31.58	31.22
6	60.00	09°14'36"	9.58	9.67
7	60.00	61°13'36"	53.43	50.32
8	60.00	55°40'55"	57.32	54.23
9	60.00	59°59'24"	52.35	49.99
10	60.00	71°54'05"	52.75	53.71
11	60.00	39°23'00"	41.25	40.45
12	59.88	38°56'50"	40.70	39.32

First American Title Company
 Idaho Falls, Idaho 83404
 This sketch is made solely for the purpose of assisting in locating the premises. The company assumes no liability for alleged loss or damage which may result from reliance on this map.

