

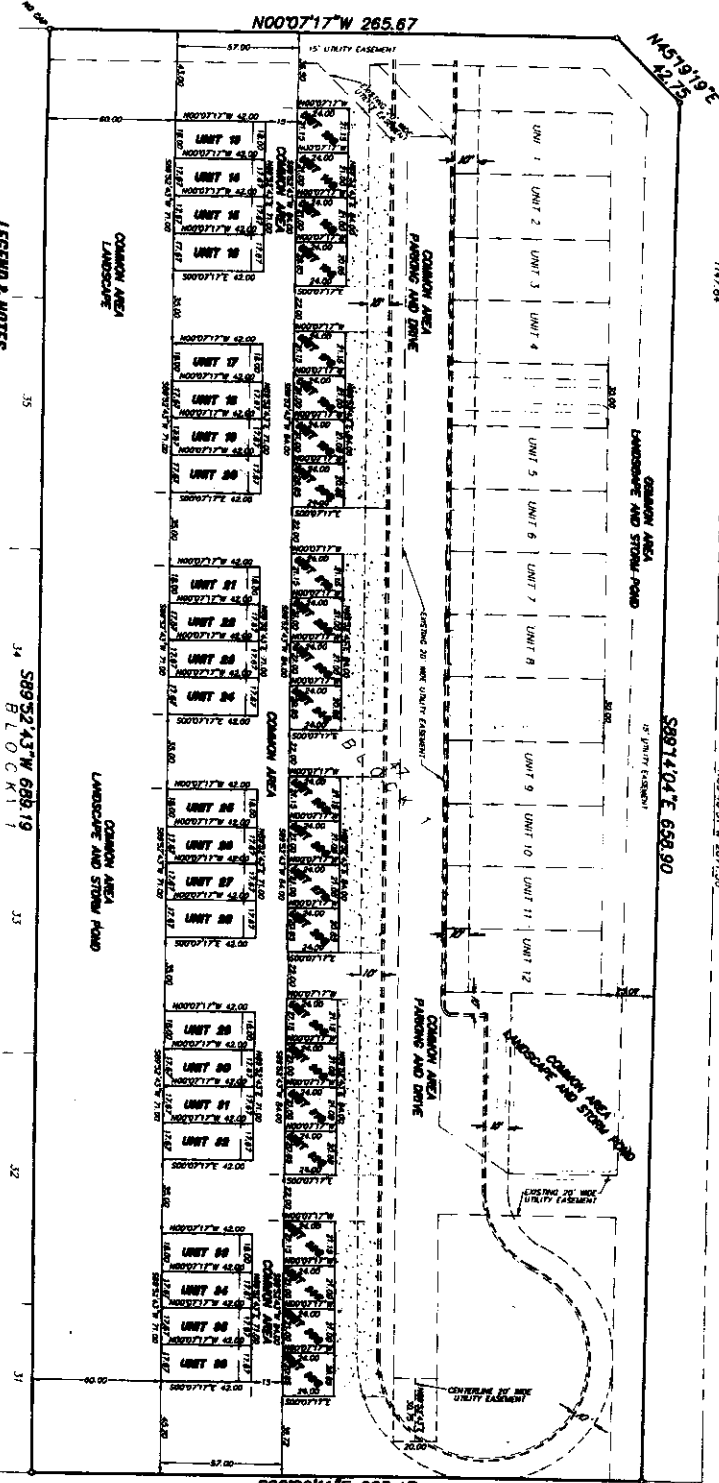
CENTENNIAL RANCH
DIVISION NO. 15
BLOCK 16

CENTENNIAL RANCH
DIVISION NO. 15
BLK 14

ROBINSON DRIVE

N00D717'W 285.67

N45D19'E
42.125



LEGEND & NOTES

- 1/2" Steel Rebar (with fabric cover) spaced @ 18" O.C. (See note on drawings)
- 12" x 24" Steel Rebar with fabric cover spaced @ 18" O.C.
- Light concrete walls are as noted
- Unit boundary lines
- Building
- Parking, roads, and landscaped areas are common areas

S89°32'43"W 688.19
BLOCK 16
CENTENNIAL RANCH
DIVISION NO. 15

First American Title Company
Idaho Falls, ID 83404
While this is a photographic reproduction of the recorded plat, the company assumes no liability for variations, if any, with a reference.

Final and complete set of drawings prepared by the designer including the final and all improvements thereon, but subject to all amendments, conditions, and restrictions, and easements set forth in the Declaration of Covenants, Conditions and Restrictions of Cherry Creek.
The project consists of 30 units and a common area.
If at the option of the purchaser the common is then used and left in the possession of the common area.
Units 11 thru 26 contain 0.17 acre per unit, Units 1-10, 27 thru 30 contain 0.171 acre per unit. Building, common area and common areas occupy the same general location as shown on drawings.

**FIRST AMENDED PLAT OF
CHERRY CREEK**
PURSUANT TO DAHO CODE TITLE 66, CHAPTER 18
CITY OF AMMON, BONNEVILLE COUNTY, IDAHO
BEING A REPLAT OF UNITS 18 THRU 30, CHERRY CREEK
LYING IN LOT 47, BLOCK 1, FIRST AMENDED PLAT OF CENTENNIAL RANCH, DIVISION NO. 15
COVER DATE ESTATES
DIVISION NO. 3

BRASS CAP
SECTION 23
T 5 N 4 COR
C.P. 66 BY 15 827
N 57R NO 522330

181 STREET
T147.65

SECTION LINE (BASIS OF BEARING)
CITY OF IDAHO FALLS DATUM PRE-2004
N89°40'S1'W 2871.30

S8914'04"E 658.90

ALUMINUM CAP
SECTION 23
T 5 N 4 COR
C.P. 66 BY 15 827
N 57R NO 519189

COVER DATE ESTATES
DIVISION NO. 6

S00D6'11'E 285.47
UNPLATTED