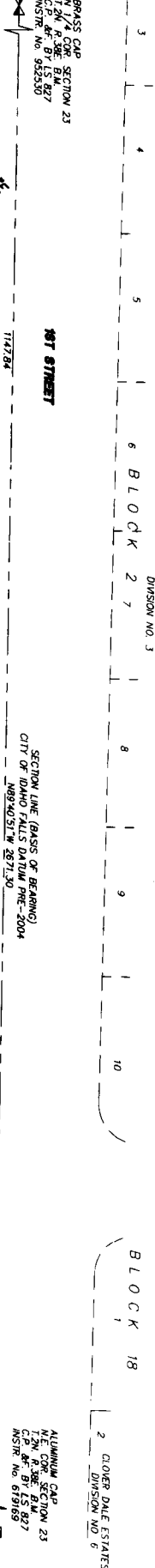


CENTENNIAL RANCH
DIVISION NO. 15
BLOCK 16

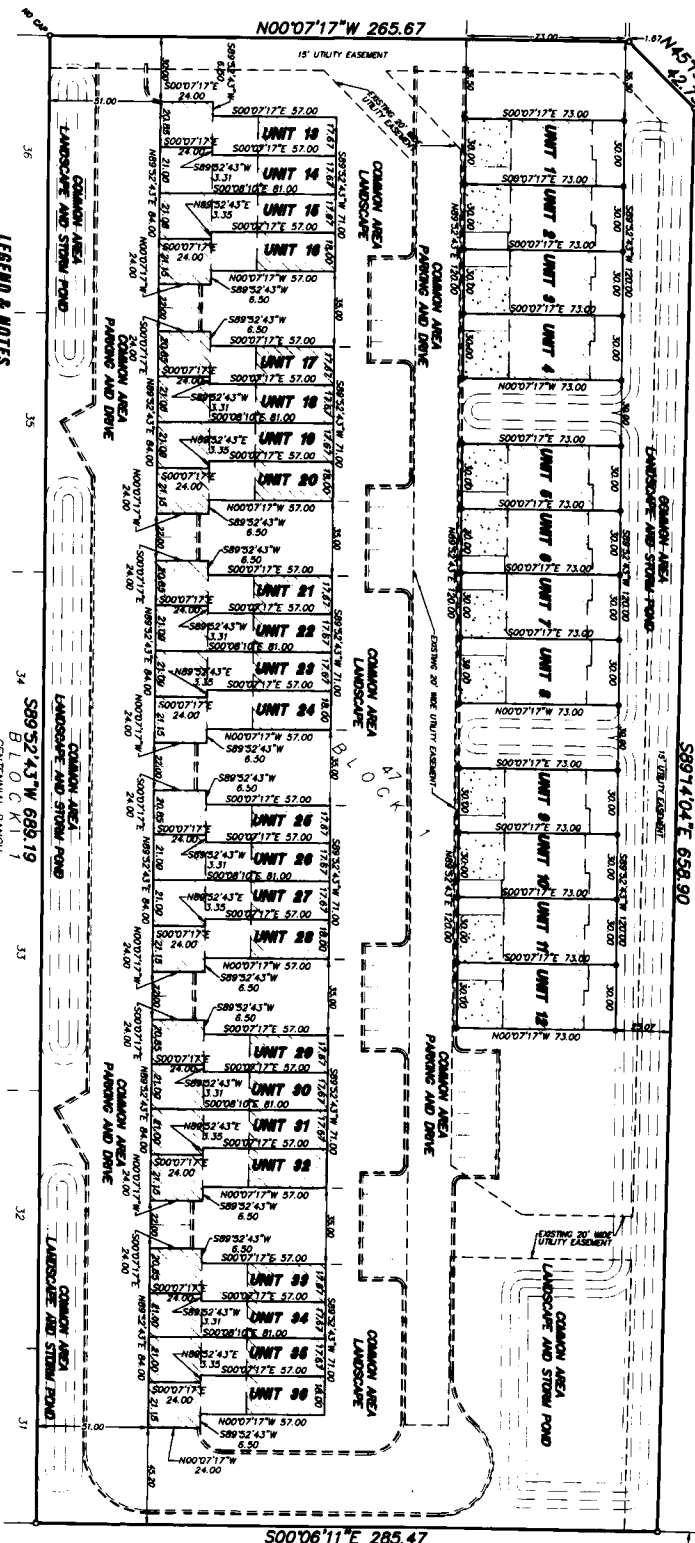
CENTENNIAL RANCH
DIVISION NO. 15
BLK 14

BRASS GAP
N 1/4 COR. SECTION 23
T2N, R3E, B1M
C.P. BY LS 827
MSR, No. 952530



CHERRY CREEK
PURSUANT TO DAHO CODE TITLE 84, CHAPTER 15
CITY OF AMMON, BONNEVILLE COUNTY, DAHO
LYING IN LOT 47, BLOCK 1, FIRST AMENDED PLAT OF CENTENNIAL RANCH, DIVISION NO. 15

ROBISON DRIVE



LEGEND & NOTES

- 1/2" Steel bar (see legend and block cap stamped 1.577) sheet steel reinforcement
- 1/2" x 4" Steel bar (see legend and block cap stamped 1.575)
- Light colored walls are as noted
- Unit Boundary line
- Parking, walk, and landscape areas are common areas

Each unit consists of the entire property received by the Unit Boundary line including the land and all improvements thereon, but subject to the easements, covenants, and restrictions, and encumbrances set forth in the Declaration of Covenants, Conditions and Restrictions of Cherry Creek.

The project consists of 36 units and a common area.

It is the intent of this plat that the unit boundary line coincide to the extent and for the entire line of the common wall.

Unit 1 has 17.2 square 0.054 acres per unit.

Unit 2 has 28.0 square 0.033 acres per unit. Building footprint and area covered occupy the same geographical location as measured on.

899'52.43"W 688'19"
BLOCK 16
DIVISION NO. 15
CENTENNIAL RANCH

First American Title Company
Idaho Falls, ID 83404

While this is a photographic reproduction of the recorded plat, the company assumes no liability for variations, if any, with a re-survey.

SECTION LINE (BASIS OF BEARING)
CITY OF IDAHO FALLS DATUM PHE-2004
N89°40'51"W 2871.30'

S89°14'04"E 658.90'

ALUMINUM CAP
T2N, R3E, B1M
C.P. BY LS 827
MSR, No. 619189

15331.46
S00706'11"E 28.14'