

# CHERYL ANN CONDOMINIUMS

AN IDAHO CONDOMINIUM PROJECT  
 PART OF THE NE 1/4 OF THE SW 1/4 SEC. 17 T2N, R38E.B.M.  
 IDAHO FALLS, BONNEVILLE COUNTY, IDAHO

BENTON ENGINEERING  
 CONSULTING ENGINEERS

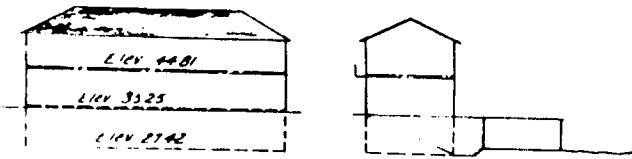
IDAHO FALLS  
 IDAHO



First American Title Company

Idaho Falls, Idaho 83404

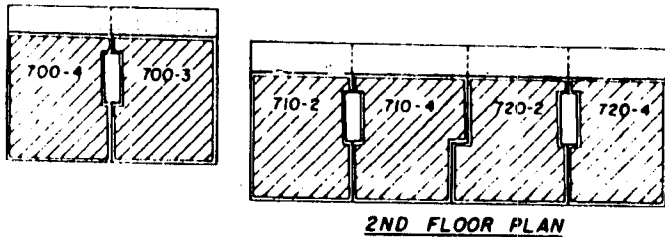
This sketch is made solely for the purpose of assisting in locating the premises. The company assumes no liability for alleged loss or damage which may result from reliance on this map.



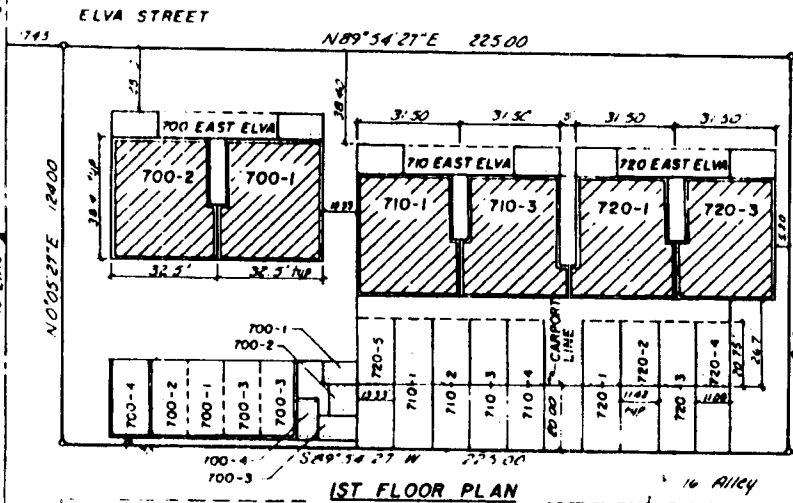
8-PLEX ELEVATION



4-PLEX ELEVATION



2ND FLOOR PLAN



1ST FLOOR PLAN



BASEMENT PLAN

**LEGEND:**

- 1 All numbered units are separate ownership. All cross-hatched areas indicate Separate Ownership.
- 2 All dotted areas indicate Limited Common Areas.
- 3 All areas not cross-hatched or dotted are the Common Areas which comprise the remainder of the project.
- 4 All elevations shown are to 1981-10's City base.

Separate Ownership

Limited Common Area

Common Area