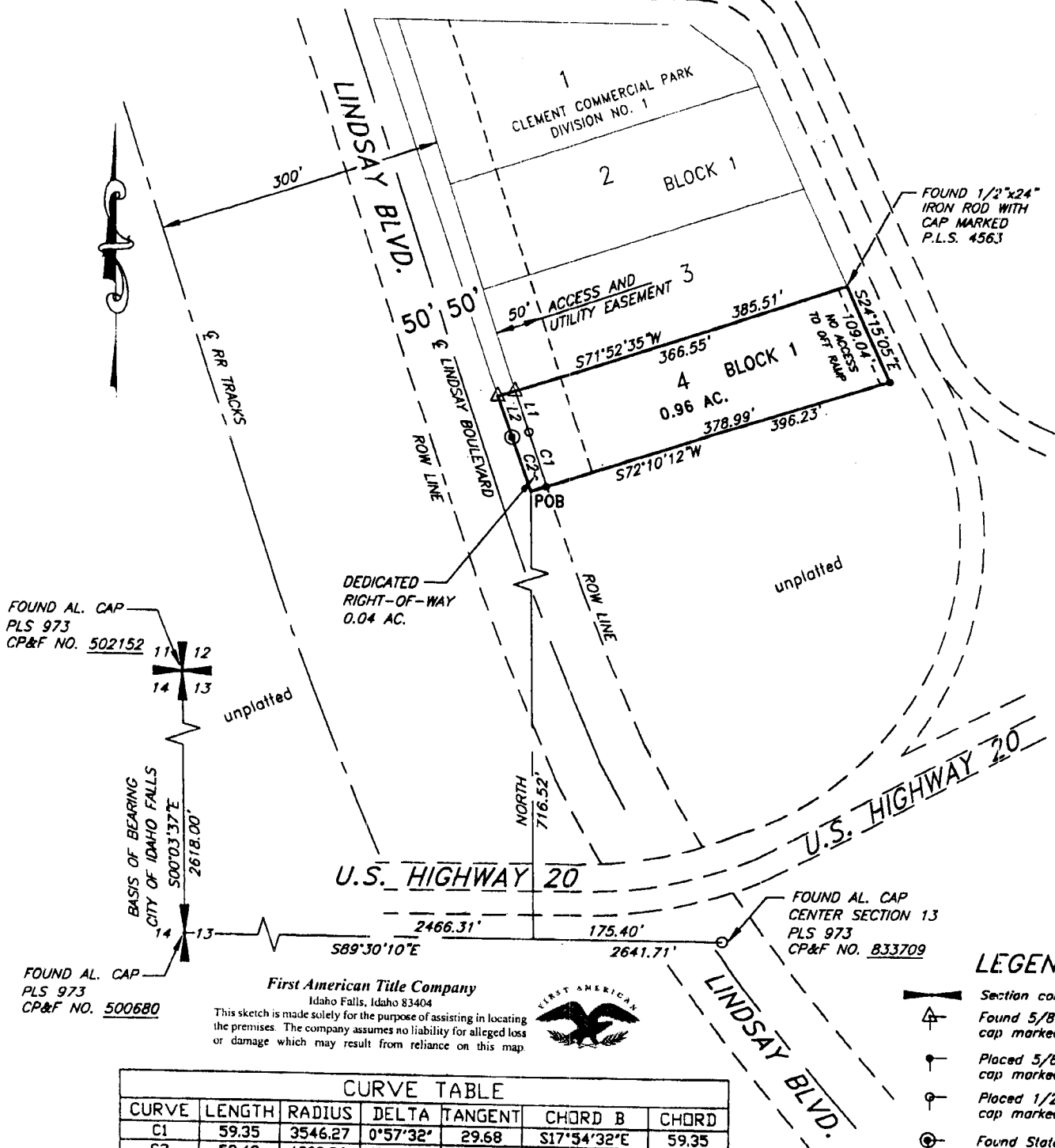


CLEMENT COMMERCIAL PARK

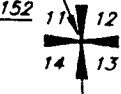
DIVISION NO. 2

AN ADDITION TO THE CITY OF IDAHO FALLS, BONNEVILLE COUNTY, IDAHO
PART OF SECTION 13, T. 2 N., R. 37 E., B.M.

U.S. HIGHWAY 20
ACCESS FAP NO. F-647(17)



FOUND AL. CAP
PLS 973
CP&F NO. 502152



unplatted

BASIS OF BEARING
CITY OF IDAHO FALLS
S00°03'37"E
2618.00'

DEDICATED
RIGHT-OF-WAY
0.04 AC.

FOUND AL. CAP
PLS 973
CP&F NO. 500680

First American Title Company
Idaho Falls, Idaho 83404
This sketch is made solely for the purpose of assisting in locating the premises. The company assumes no liability for alleged loss or damage which may result from reliance on this map.



FOUND AL. CAP
CENTER SECTION 13
PLS 973
CP&F NO. 833709

CURVE TABLE						
CURVE	LENGTH	RADIUS	DELTA	TANGENT	CHORD B	CHORD
C1	59.35	3546.27	0°57'32"	29.68	S17°54'32"E	59.35
C2	59.49	1909.86	1°47'05"	29.75	S19°00'58"E	59.49

LINE TABLE		
LINE	LENGTH	BEARING
L1	47.13	N17°25'46"W
L2	46.91	S18°07'25"E

LEGEND

- Section control corners
- Found 5/8"x30" iron rod with cap marked P.L.S. 4563
- Placed 5/8"x30" iron rod with cap marked P.L.S. 4563
- Placed 1/2"x24" iron rod with cap marked P.L.S. 4563
- Found State Highway Right-of-Way Monument
- POB Point of Beginning
- Utility easements are 15' wide along the frontage of all lots. Side yard and rear yard easements are 10' unless otherwise shown.