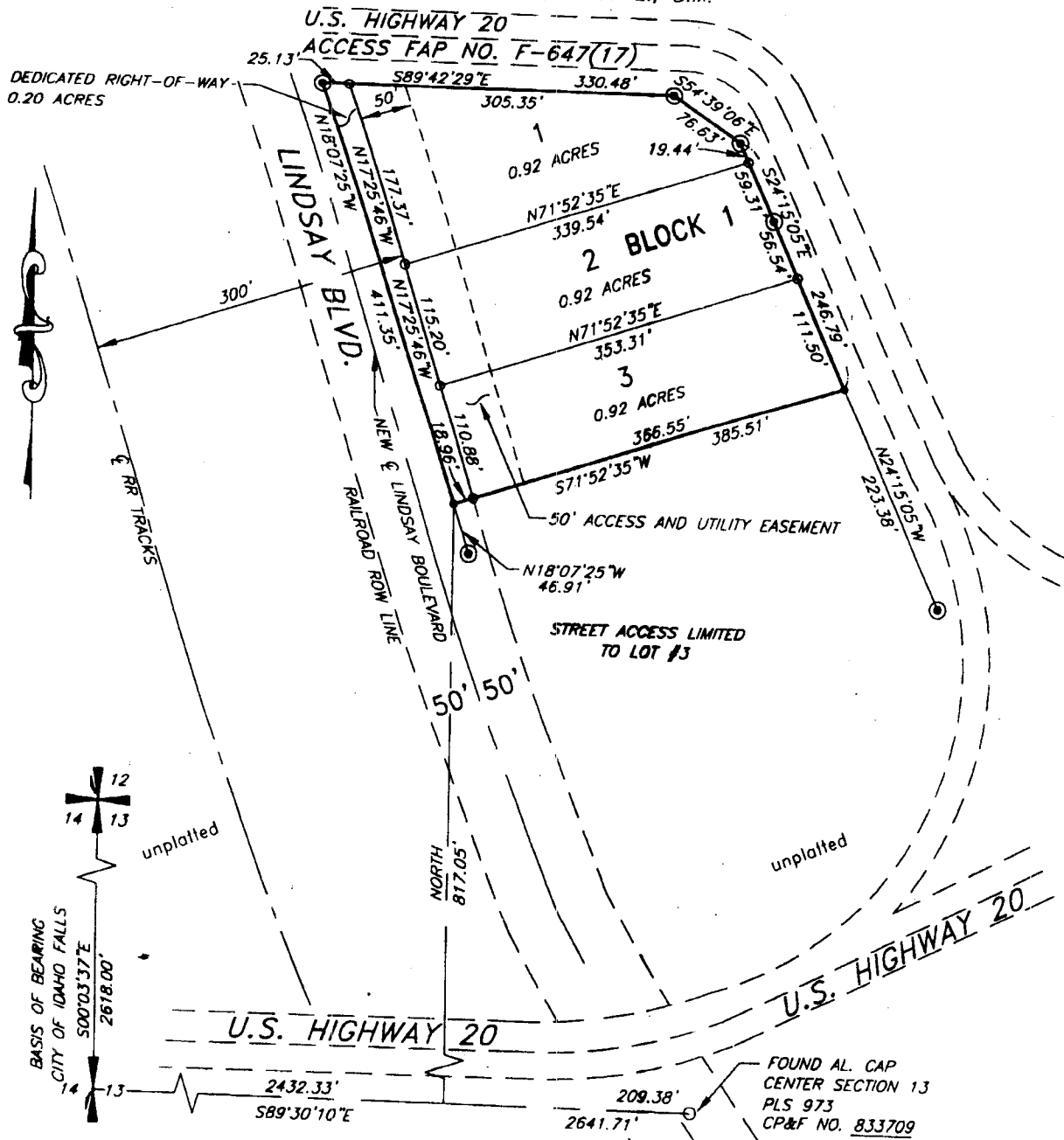


CLEMENT COMMERCIAL PARK

DIVISION NO. 1

AN ADDITION TO THE CITY OF IDAHO FALLS, BONNEVILLE COUNTY, IDAHO
PART OF SECTION 13, T. 2 N., R. 37 E., B.M.



LEGEND

- Section control corners
- Placed 5/8"x30" iron rod with cap marked P.L.S. 4563
- Placed 1/2"x24" iron rod with cap marked P.L.S. 4563
- Found State Highway Right-of-Way Monument
- POB Point of Beginning
- Utility easements are 15' wide along the frontage of all lots. Side yard and rear yard easements are 10' unless otherwise shown.

First American Title Company

Idaho Falls, Idaho 83404

This sketch is made solely for the purpose of assisting in locating the premises. The company assumes no liability for alleged loss or damage which may result from reliance on this map

