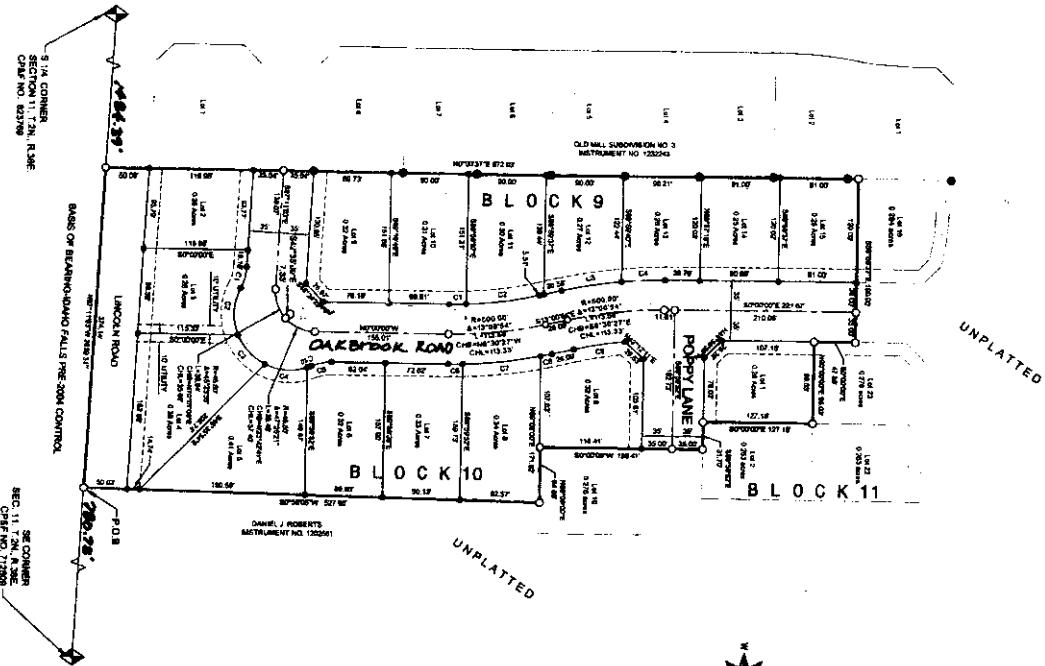


CLOVER CANYON SUBDIVISION

DIVISION NO. 1

PART OF SE 1/4 OF SECTION 11, TOWNSHIP 2 NORTH, RANGE 38 EAST, B.M.,
BONNEVILLE COUNTY, IDAHO

First American Title Company
 Idaho Falls, Id 83404
 While this is a photographic
 reproduction of the recorded
 plat, the company assumes
 no liability for variations,
 if any, with a re-survey.



PARCEL CURVE DATA

SEGMENT NO.	BEARING	DELTA	LENGTH	CHORD LENGTH	CHORD BEARING
01	S 89° 00' 00" W	25.37	25.37	25.37	S 89° 00' 00" W
02	S 89° 00' 00" W	25.37	25.37	25.37	S 89° 00' 00" W
03	S 89° 00' 00" W	25.37	25.37	25.37	S 89° 00' 00" W
04	S 89° 00' 00" W	25.37	25.37	25.37	S 89° 00' 00" W
05	S 89° 00' 00" W	25.37	25.37	25.37	S 89° 00' 00" W
06	S 89° 00' 00" W	25.37	25.37	25.37	S 89° 00' 00" W
07	S 89° 00' 00" W	25.37	25.37	25.37	S 89° 00' 00" W
08	S 89° 00' 00" W	25.37	25.37	25.37	S 89° 00' 00" W
09	S 89° 00' 00" W	25.37	25.37	25.37	S 89° 00' 00" W
10	S 89° 00' 00" W	25.37	25.37	25.37	S 89° 00' 00" W
11	S 89° 00' 00" W	25.37	25.37	25.37	S 89° 00' 00" W
12	S 89° 00' 00" W	25.37	25.37	25.37	S 89° 00' 00" W
13	S 89° 00' 00" W	25.37	25.37	25.37	S 89° 00' 00" W
14	S 89° 00' 00" W	25.37	25.37	25.37	S 89° 00' 00" W
15	S 89° 00' 00" W	25.37	25.37	25.37	S 89° 00' 00" W
16	S 89° 00' 00" W	25.37	25.37	25.37	S 89° 00' 00" W
17	S 89° 00' 00" W	25.37	25.37	25.37	S 89° 00' 00" W
18	S 89° 00' 00" W	25.37	25.37	25.37	S 89° 00' 00" W
19	S 89° 00' 00" W	25.37	25.37	25.37	S 89° 00' 00" W
20	S 89° 00' 00" W	25.37	25.37	25.37	S 89° 00' 00" W



- LEGEND**
- FOUND LOT FROM RECORD
 - SET 1/2" X 3/4" IRON ROD WITH 1/2" DIA. CAP MARKED L.S. 8288
 - SET 3/4" X 3/4" IRON ROD WITH A YELLOW CAP MARKED L.S. 8288
 - ◆ SECTION CORNER MONUMENT
 - P.O.B.
 - PROPERTY BOUNDARY
 - LOT LINE
 - 15' PUBLIC UTILITY EASEMENT

FLOOD PLAIN NOTE
 According to the FEMA Flood Insurance Risk Map community panel number 1800270070 the subdivision is in the 100-year flood plain.

MAINTENANCE
 The County will not maintain roads until dedicated to County streets and officially accepted. Private roads and easements will not be maintained by the County.

- NOTES:**
1. A 16 foot wide utility easement is reserved along the street side of all lots. The public utility easements shown hereon are not dedicated to the public but the right to use said easements are reserved for public utilities or for any other uses as designated.
 2. Challenge notices (utility) forms, opinions and address applications will be considered and maintained with the correct consideration as to the appropriate and improved drawings on file with the Bonneville County Public Works Department.
 3. All buildings shall be set back 30 feet from all rear right-of-way lines.
 4. No vehicular traffic will be allowed onto Lincoln Road from Lots 2,3 and 4 Block 10.
 5. Lots shown on the plat are included in a lighting district and will be assessed for operation and maintenance costs of the district.