

# CLOVER DALE ESTATES

## DIVISION NO. 9

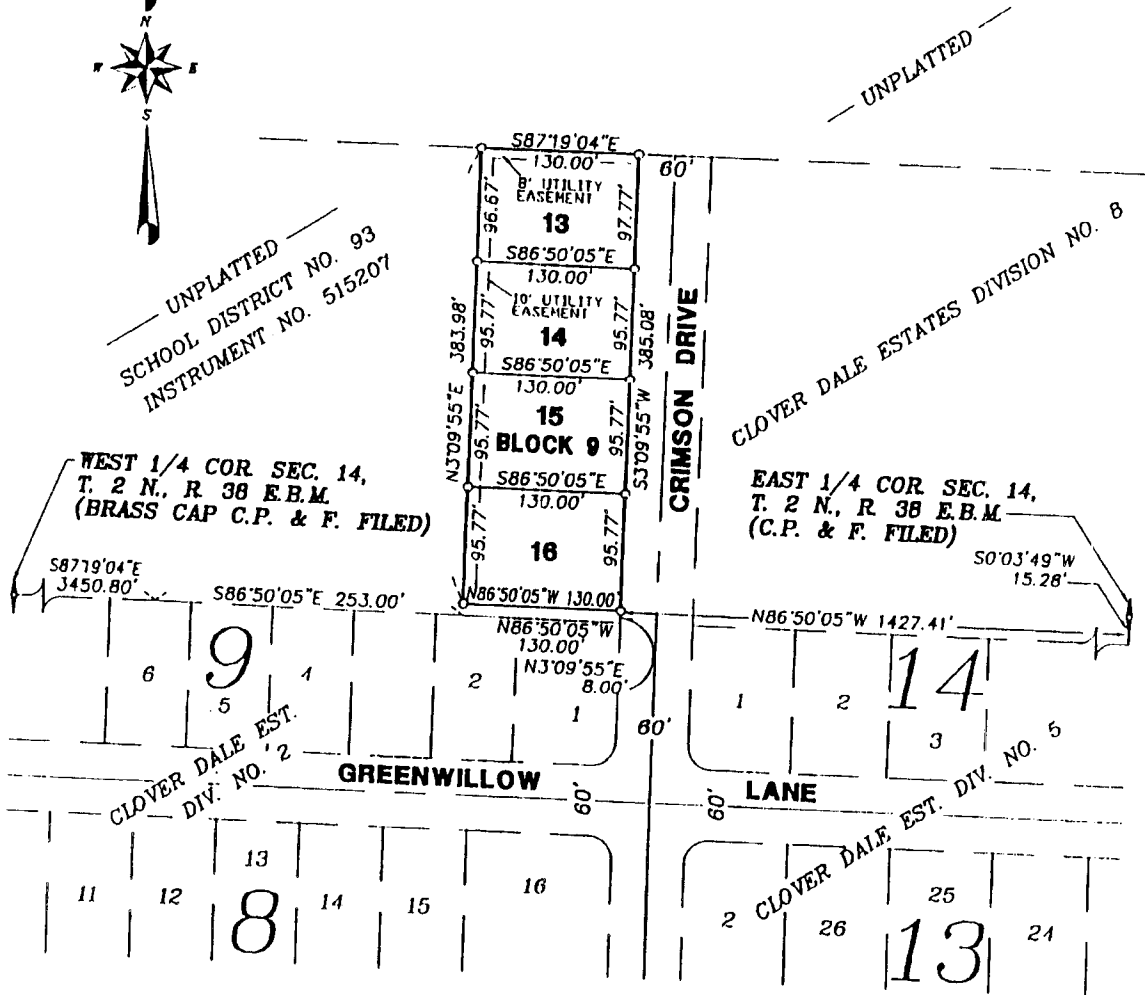
BONNEVILLE COUNTY, IDAHO

PART OF THE EAST 1/2 OF SEC. 14, T. 2 N., R. 38 E.B.M.

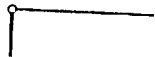
First American Title Company

Idaho Falls, Idaho 83404

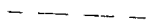
This sketch is made solely for the purpose of assisting in locating the premises. The company assumes no liability for alleged loss or damage which may result from reliance on this map.



### NOTES



indicates a 1/2" x 24" iron rod placed with a yellow plastic cap marked L.S. 760.



utility easements are 8' thru each lot unless otherwise shown.

a 10' wide utility easement is reserved along the street side of all lots.