

CLOVER DALE ELEMENTARY

DIVISION NO. 1

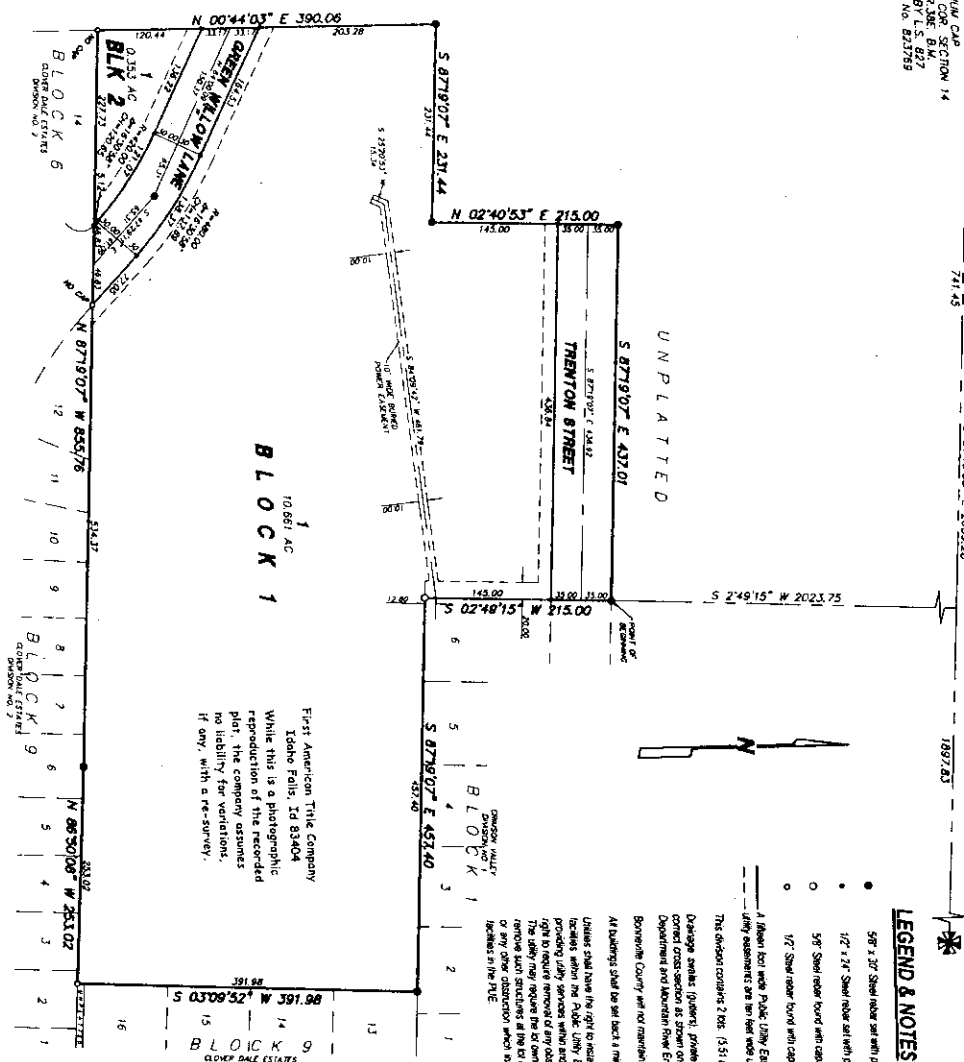
BONNEVILLE COUNTY, IDAHO

BEING A PART OF THE N. 1/2 OF SECTION 14, T29N, R39E, B1M

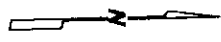
ALUMINUM CAP
N 1/4 COR. SECTION 14
206' 87" S. B27
COR. 87' S. B27
INSTR. NO. 823789

SECTION LINE (BASE OF BEARING)
CITY OF BONNEVILLE
S 87°10'55" E 2023.75

RAILROAD SPIKE
N.E. COR. SECTION 14
206' 87" S. B27
COR. 87' S. B27
INSTR. NO. 534728



UNPLATTED



LEGEND & NOTES

- 5/8" x 3/32" Steel rebar set with plastic cap stamped L.S. 8795
- 1/2" x 1/4" Steel rebar set with plastic cap stamped L.S. 8795
- 5/8" Steel rebar board with caps stamped L.S. 772 unless noted otherwise
- 1/2" Steel rebar board with caps stamped L.S. 780 unless noted otherwise

1. When lot under Public Utility Easement is hereby reserved along all road frontages when said lot is for public utility easements are in the wet unless noted otherwise.

The division consists of 206. (531 area average to 202.)

Change made: (insert, please dimensions and distance approaches will be constructed and maintained with the original construction as shown on the approved improvement drawings on file in the Bonneville County Public Works Department and Mountain River Engineering.

Bonneville County will not maintain roads until approved by County Engineers and officially approved and accepted.

All buildings shall be set back a minimum 30 feet from all road right-of-way lines.

Unless stated to the right to retain, maintain, and operate their equipment above and below ground and all other related structures within the Public Utility Easement (PUE) shall be retained in place and not removed, repaired, or replaced in kind within the PUE. The owner shall be responsible for the maintenance and repair of all structures within the PUE. The owner shall be responsible for the maintenance and repair of all structures within the PUE. The owner shall be responsible for the maintenance and repair of all structures within the PUE.

First American Title Company
Idaho Falls, ID 83404

While this is a photographic reproduction of the recorded plat, the company assumes no liability for variations, if any, with a re-survey.

BLOCK 6
OLDER ROAD DRIVE
DIVISION NO. 7

BLOCK 7
DIVISION NO. 7

BLOCK 9
CLOVER DALE ESTATES
DIVISION NO. 7