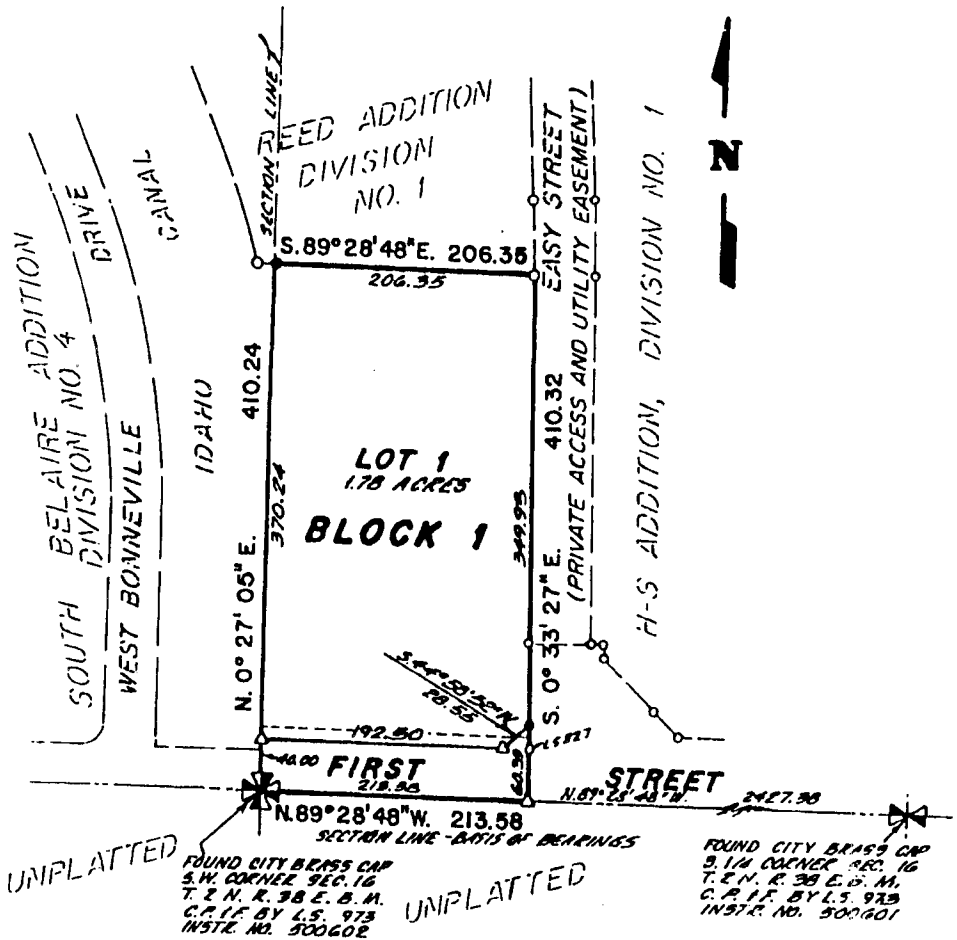


COLEMAN ESTATES DIVISION NO. 1

AN ADDITION TO THE CITY OF IDAHO FALLS, BONNEVILLE COUNTY, IDAHO
BEING PART OF THE S.W. 1/4 S.W. 1/4 SECTION 16, T. 2 N., R. 38 E., B.M.

First American Title Company
Idaho Falls, Idaho 83404

This sketch is made solely for the purpose of assisting in locating the premises. The company assumes no liability for alleged loss or damage which may result from reliance on this map.



LEGEND AND NOTES

- 5/8" x 30" Steel Re-Bar set with plastic caps stamped L.S. 8795
- 1/2" x 24" Steel Re-Bar set with plastic caps stamped L.S. 8795
- △ Magnetic nail set in asphalt roadway
- 1/2" Steel Re-Bar found with plastic cap stamped L.S. 8795 unless otherwise noted.

----- Public utility easements are ten feet wide unless otherwise noted.