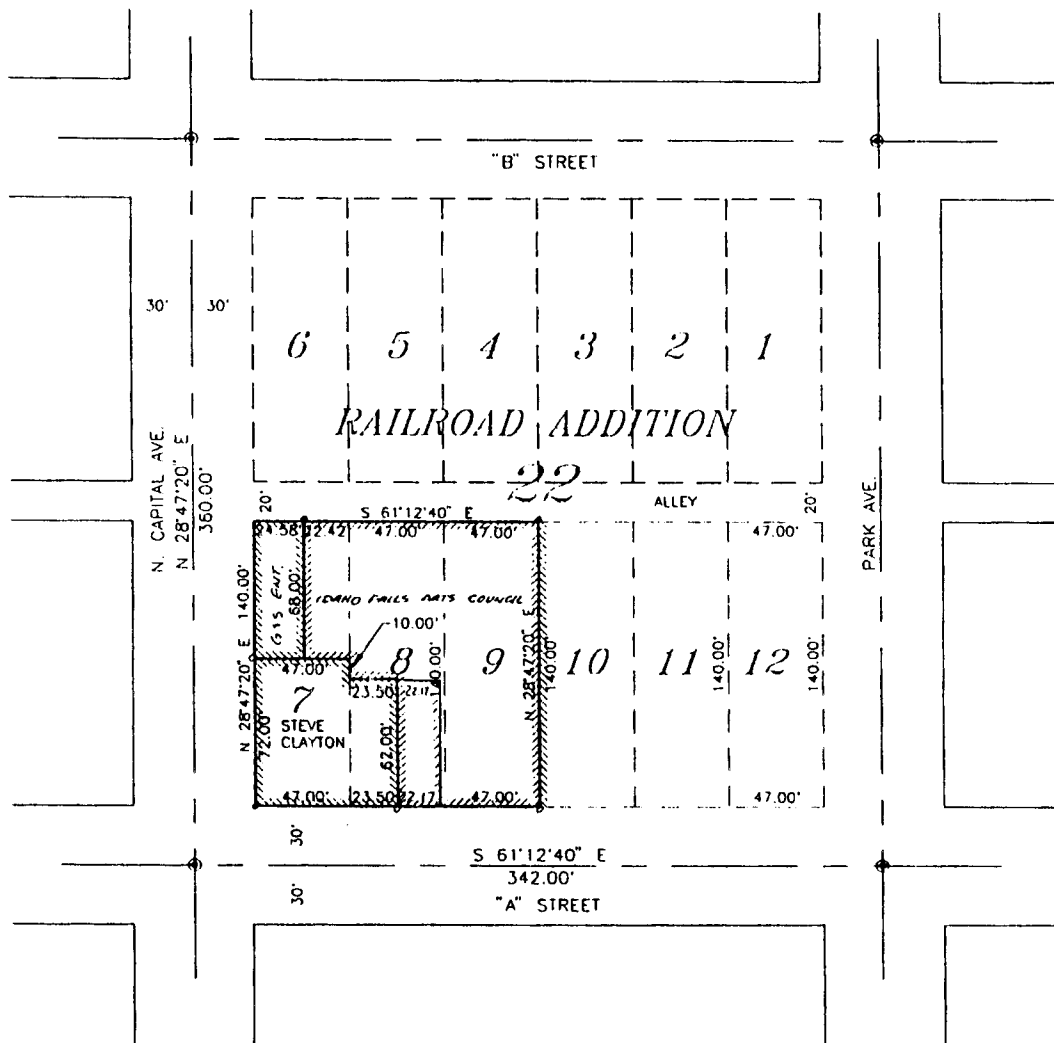
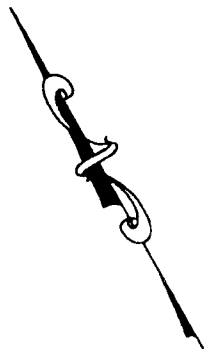


EXHIBIT "A" Record of Survey COLONIAL ARTS CENTER AN IDAHO CONDOMINIUM PROJECT

PART OF LOTS 7, 8 & 9, BLOCK 22, RAILROAD ADDITION
CITY OF IDAHO FALLS, BONNEVILLE COUNTY, IDAHO



LEGEND

- City Control Monument (Brass Cap)
- Placed concrete nail
- Chiseled cross in concrete
- Ownership lines

First American Title Company

Idaho Falls, Idaho 83404

This sketch is made solely for the purpose of assisting in locating the premises. The company assumes no liability for alleged loss or damage which may result from reliance on this map.



SHEET 1 OF 2