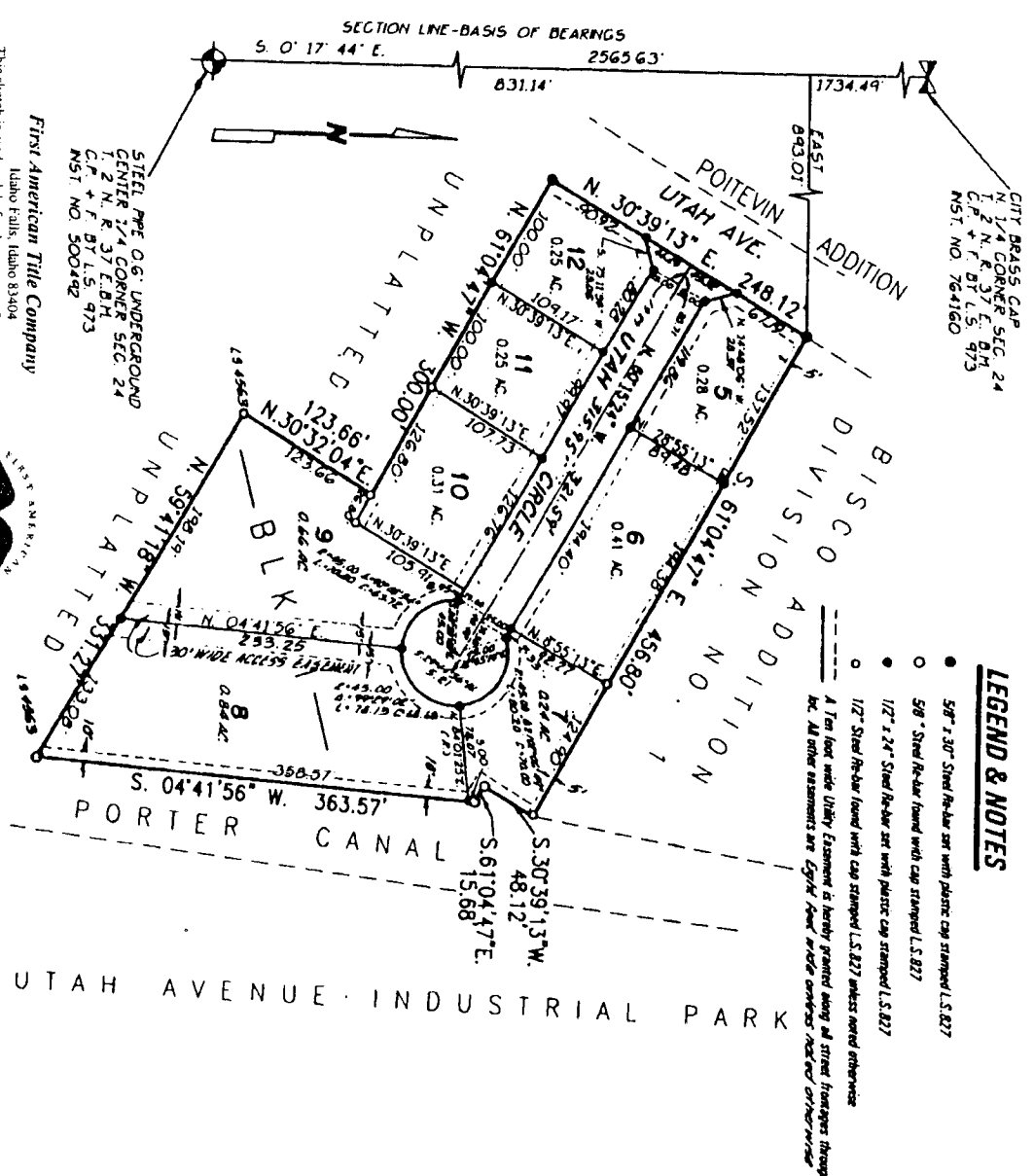


COMMUNICATIONS ADDITION DIVISION NO. 2

TO THE CITY OF IDAHO FALLS, BONNEVILLE COUNTY, IDAHO
BEING A REPLAT OF COMMUNICATIONS ADDITION DIVISION NO. 1
AND PAUL ROBERTS ADDITION DIVISION NO. 1
TO THE CITY OF IDAHO FALLS, BONNEVILLE COUNTY, IDAHO
IN THE N.E. 1/4 OF SECTION 24, T. 2 N., R. 37 E., B.M.



CITY BRASS CAP
N. 1/4 CORNER SEC. 24
T. 2 N., R. 37 E., B.M.
C.P. + F. DT U.S. 973
NSI. NO. 764160

LEGEND & NOTES

- 5/8" x 30" Steel Rebar set with plastic cap stamped L.S. 827
 - 5/8" Steel Rebar found with cap stamped L.S. 827
 - 1/2" x 24" Steel Rebar set with plastic cap stamped L.S. 827
 - 1/2" Steel Rebar found with cap stamped L.S. 827 unless noted otherwise
- A Top line note Utility Easement is hereby granted along all street frontages through and to the City of Idaho Falls, Bonneville County, Idaho. All other easements are Easements found under other records or otherwise.

STEEL PIPE O.G. UNDERGROUND
CENTER 1/4 CORNER SEC. 24
C.P. + F. DT U.S. 973
NSI. NO. 300492

First American Title Company
Idaho Falls, Idaho 83404

This sketch is made solely for the purpose of assisting in locating the premises. The company assumes no liability for alleged loss or damage which may result from reliance on this map.



UTAH AVENUE INDUSTRIAL PARK