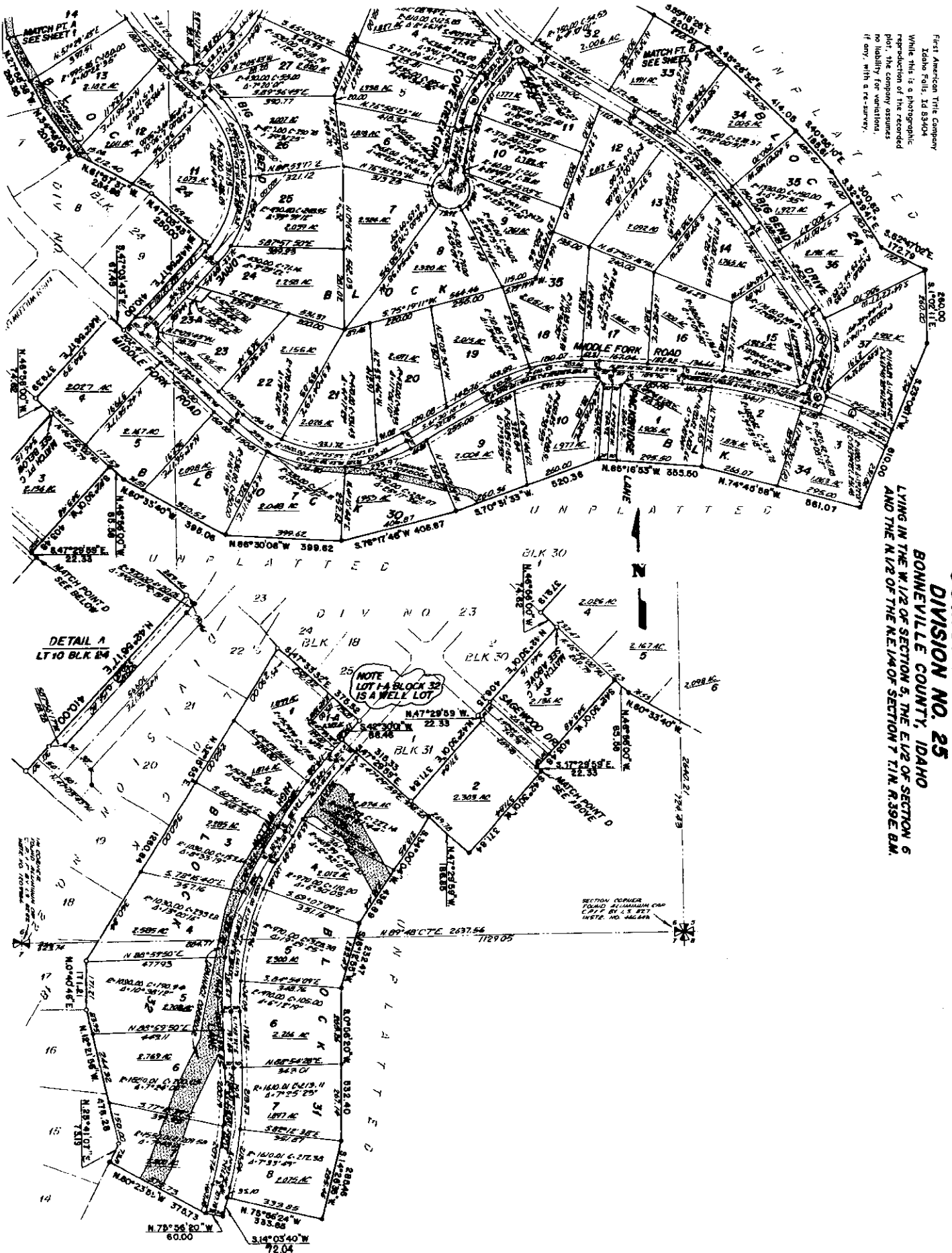


First American Title Company  
 Idaho Falls, Id 83404  
 While this is a photographic  
 reproduction of the recorded  
 plat, the company assumes  
 no liability for variations,  
 if any, with a re-survey.



**COMORE LOMA**  
**DIVISION NO. 25**

BONNEVILLE COUNTY, IDAHO  
 LYING IN THE W 1/2 OF SECTION 5, THE E 1/2 OF SECTION 6  
 AND THE N 1/2 OF THE NE 1/4 OF SECTION 7 T.1N. R.39E. B.M.



SECTION CORNER  
 QUARTZ ALUMINUM CAP  
 CH. 17 BY 1.5 IN.  
 1976. NO. 16168

DETAIL A  
 LT 10 BLK 24

NOTE  
 LOT 1-A BLOCK 32  
 IS A WELLS LOT

UNPLATTED

UNPLATTED

UNPLATTED

UNPLATTED

UNPLATTED

UNPLATTED

UNPLATTED