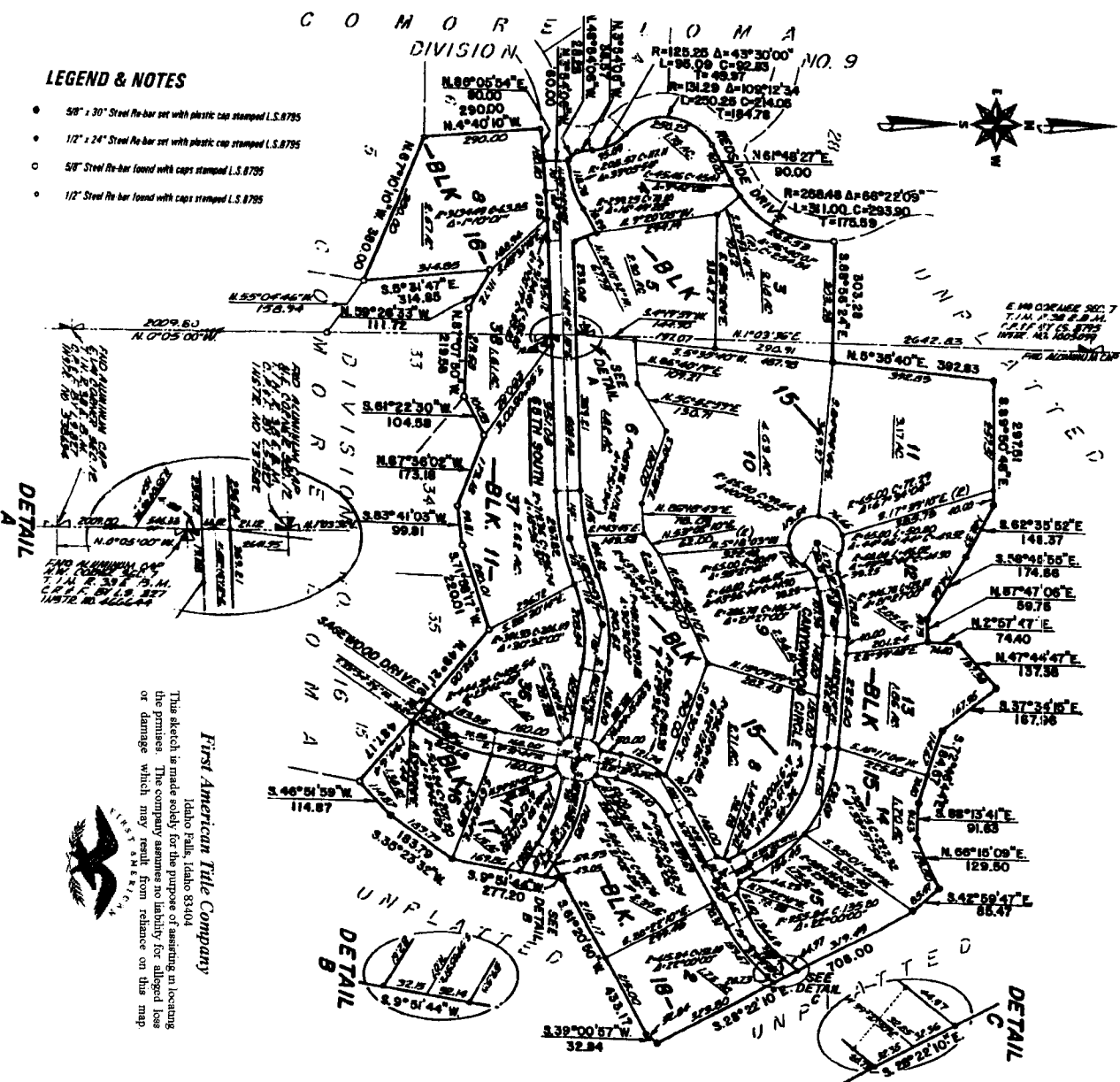


COMORE LOMA DIVISION NO. 19 BONNEVILLE COUNTY, IDAHO

**BEING PART OF S.E. 1/4 OF THE S.E. 1/4 OF SECTION 1 AND OF
THE N.E. 1/4 OF THE N.E. 1/4 OF SECTION 12 T. 1 N. R. 39 E. B.M.
AND PART OF THE S.E. 1/4 OF THE SW 1/4 AND OF GOV'T LOT 7 OF
SECTION 6 AND OF GOV'T LOT 1 OF SECTION 7 T. 1 N. R. 39 E. B.M.
WHICH INCLUDES A REPEAT OF LOTS 1 AND 2 BLOCK 15 AND
LOT 7 BLOCK 16 OF COMORE LOMA DIVISION NO. 9**

LEGEND & NOTES

- 5/8" x 3/32" Steel Re-bar set with plastic cap stamped L.S. 8795
- 1/2" x 24" Steel Re-bar set with plastic cap stamped L.S. 8795
- 5/8" Steel Re-bar found with caps stamped L.S. 8795
- 1/2" Steel Re-bar found with caps stamped L.S. 8795



DETAIL A

DETAIL B

DETAIL C



This sketch is made solely for the purpose of assisting in locating the premises. The company assumes no liability for alleged loss or damage which may result from reliance on this map.

First American Title Company
Idaho Falls, Idaho 83404