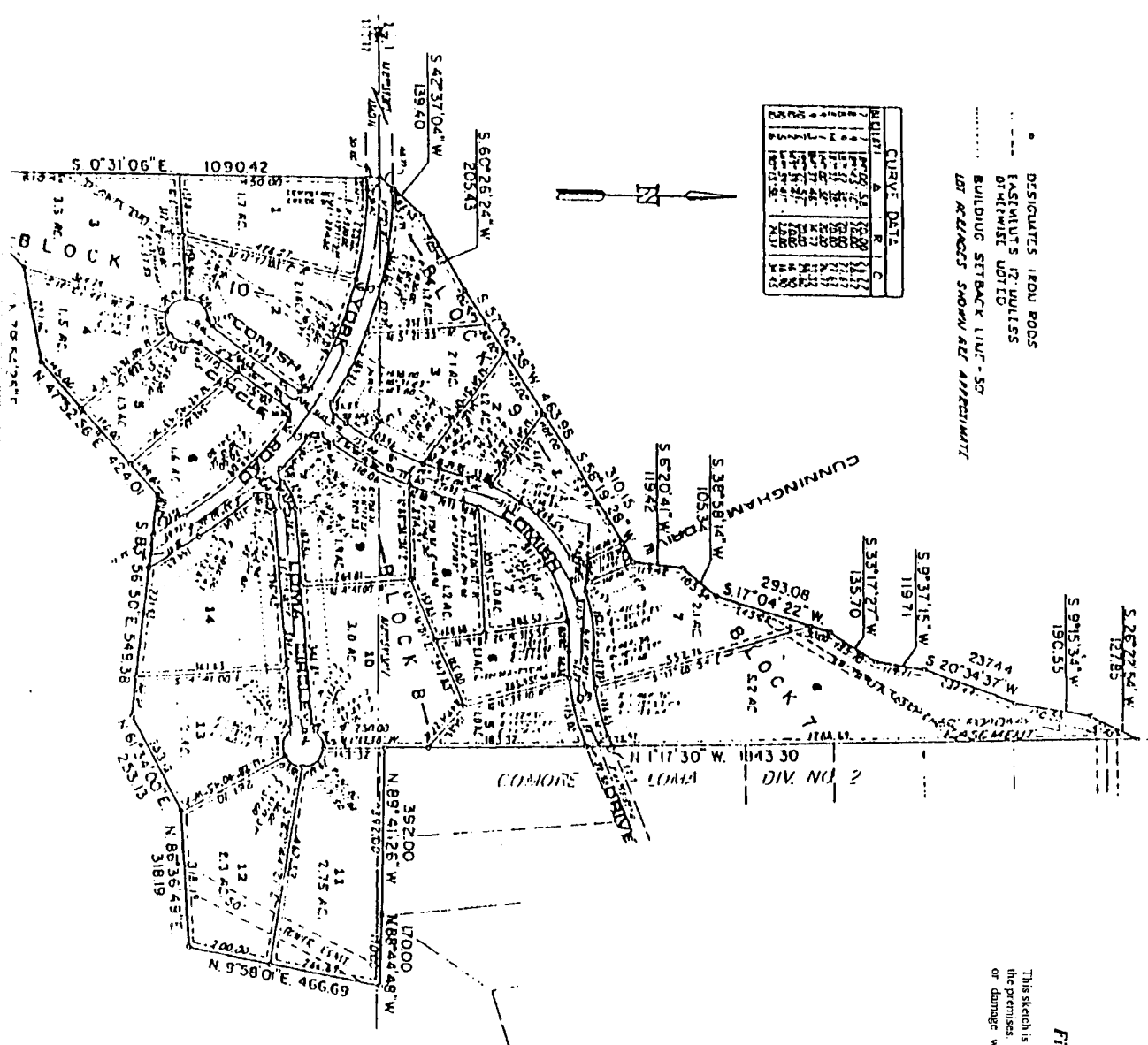
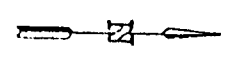


COMPTON REALTY & INVESTMENT COMPANY
DIVISION NO. 4
 BONNEVILLE COUNTY, IDAHO
 OF SECTIONS 7 & 12 T. 1 N., R. 38 E.B.M.

- DESIGNATES IRON RODS
- EASMENTS 12' WIDELSS
- ORHPWIST NOTED
- BUILDING SETBACK LINE - 50'
- LOT RELINCS SHOWN AT APPROXIMATE

BLK	TR	DATE	BY
1	A	11/22	W. H. HARRIS
2	B	11/22	W. H. HARRIS
3	C	11/22	W. H. HARRIS
4	D	11/22	W. H. HARRIS
5	E	11/22	W. H. HARRIS
6	F	11/22	W. H. HARRIS
7	G	11/22	W. H. HARRIS
8	H	11/22	W. H. HARRIS
9	I	11/22	W. H. HARRIS
10	J	11/22	W. H. HARRIS
11	K	11/22	W. H. HARRIS
12	L	11/22	W. H. HARRIS
13	M	11/22	W. H. HARRIS
14	N	11/22	W. H. HARRIS
15	O	11/22	W. H. HARRIS
16	P	11/22	W. H. HARRIS
17	Q	11/22	W. H. HARRIS
18	R	11/22	W. H. HARRIS
19	S	11/22	W. H. HARRIS
20	T	11/22	W. H. HARRIS



First American Title Company
 Idaho Falls, Idaho 83404
 This sketch is made solely for the purpose of assisting in locating the premises. The company assumes no liability for alleged loss or damage which may result from reliance on this map.

