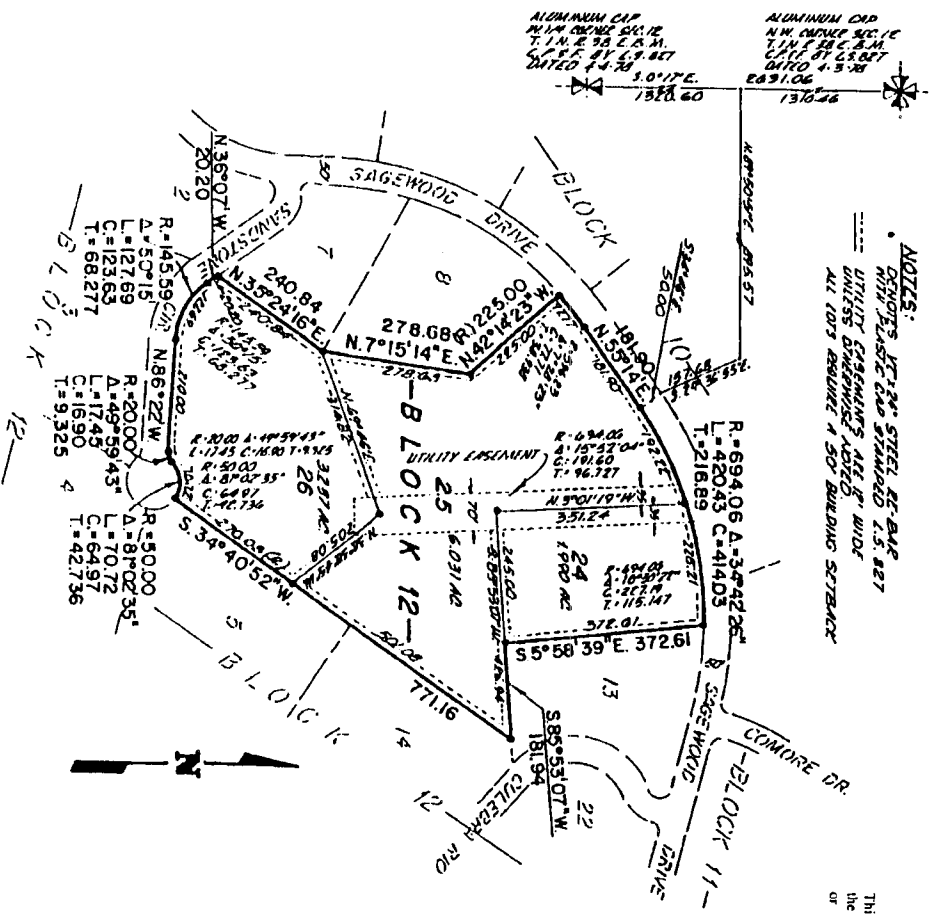


**FIRST AMENDED PLAT OF  
COMORE LOMA  
DIVISION NO. 5  
BONNEVILLE COUNTY, IDAHO**

BEING A RE-PLAT OF LOTS 6 AND 9 THRU 12, BLOCK 12  
COMORE LOMA, DIVISION NO. 5, BONNEVILLE COUNTY, IDAHO  
LYING IN THE NORTHWEST 1/4 OF SECTION 12, T. 1 N., R. 38 E., B. M.



**NOTES:**  
 • 12" X 12" STEEL RE-BAR  
 WITH PLASTIC CAP SPACED 1.5' @ 27'  
 UTILITY ENGINEER'S NOT TO SCALE  
 UNLESS OTHERWISE NOTED  
 ALL LOTS REQUIRE A 50' BUILDING SETBACK



**First American Tile Company**  
 Idaho Falls, Idaho 83404  
 This sketch is made solely for the purpose of assisting in locating  
 the premises. The company assumes no liability for alleged loss  
 or damage which may result from reliance on this map.