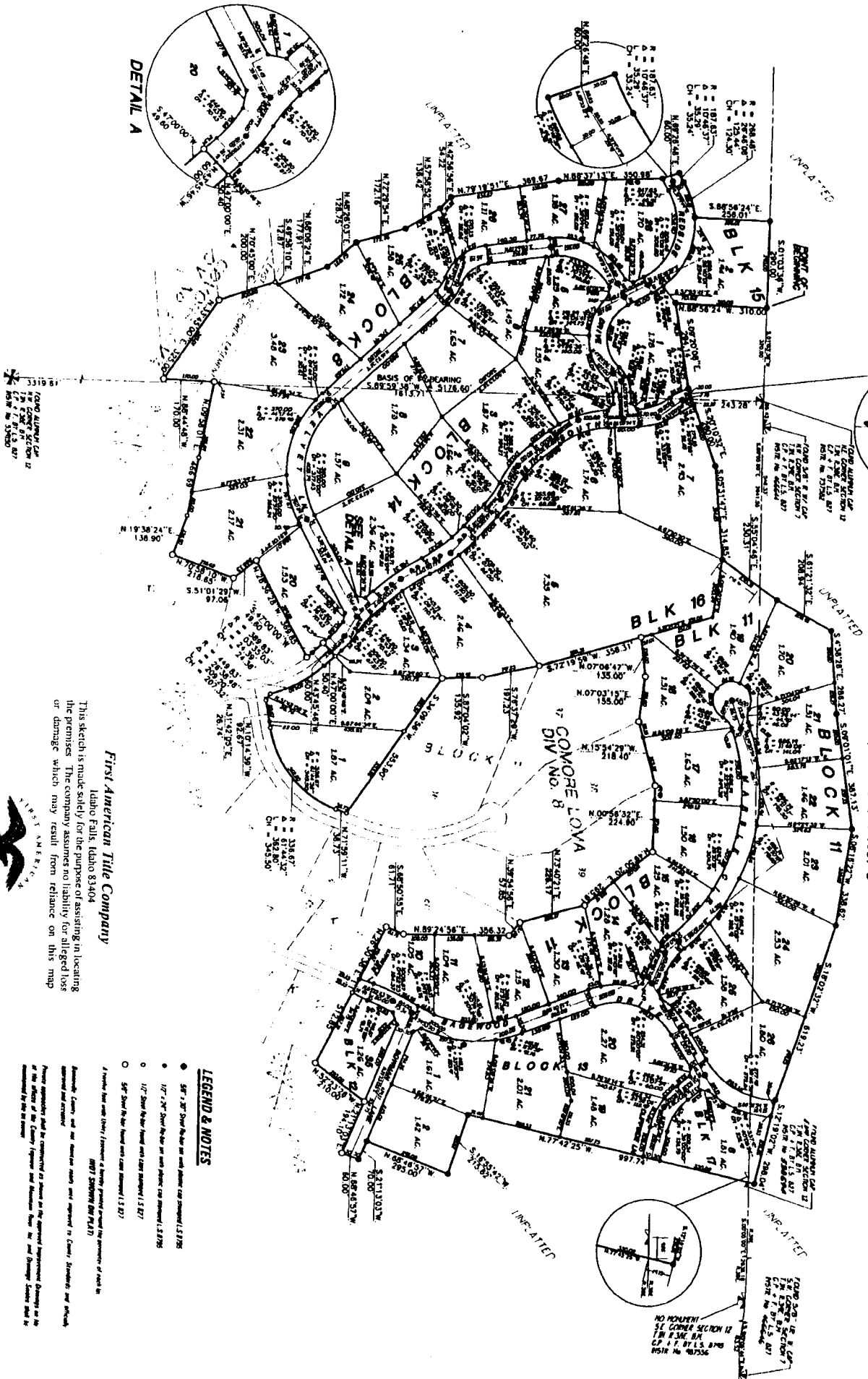


COMORE LOMA

DIVISION No. 9

BONNEVILLE COUNTY, IDAHO
 PART OF SECTION 7 T. 14 N. R. 39 E. B.M.
 PART OF SECTIONS 1 & 12 T. 14 N. R. 38 E. B.M.
 AND INCLUDES A REPLAT OF LOTS 34 & 35
 BLOCK 11 COMORE LOMA, DIVISION No. 8



This sketch is made solely for the purpose of assisting in locating the premises. The company assumes no liability for alleged loss or damage which may result from reliance on this map.

First American Title Company
 Idaho Falls, Idaho 83404



LEGEND & NOTES

- 5/8" 7-3/8" Shot Hole or iron pin (see drawing 1.3.178)
- 1/2" 7-3/8" Shot Hole or iron pin (see drawing 1.3.179)
- 1/2" Shot Hole or iron pin (see drawing 1.3.177)
- 5/8" Shot Hole or iron pin (see drawing 1.3.177)

I hereby certify that the foregoing is a true and correct copy of the original plat as recorded in the office of the County Clerk and the Division Clerk and approved by County, Recorder and Official. This plat is subject to the provisions of the approved Engineering Drawing as filed in the office of the County Recorder and Division Clerk and the Division Clerk as shown on the plat.