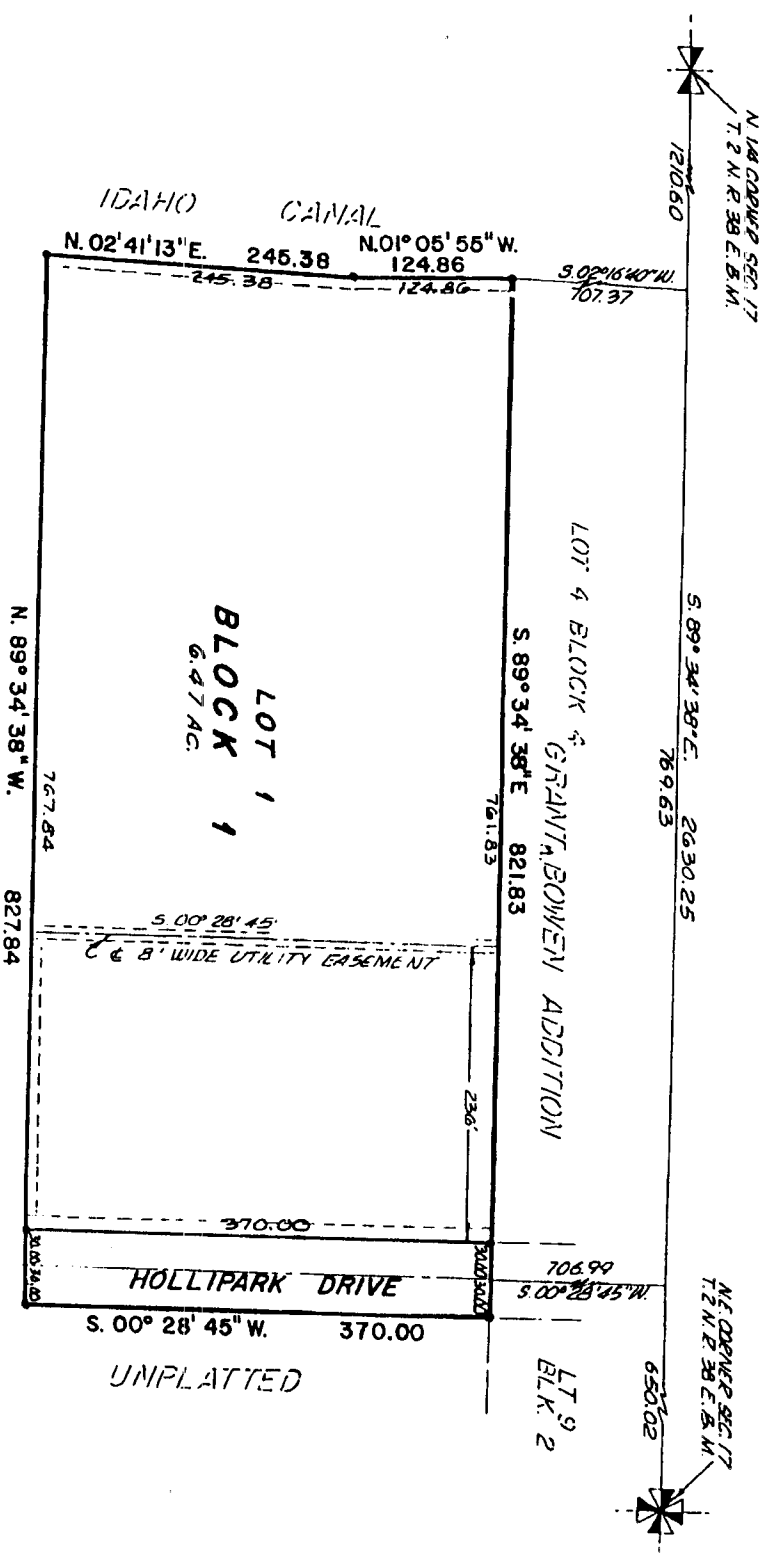


# COOK ADDITION

## DIVISION NO. 1

### TO THE CITY OF IDAHO FALLS, BONNEVILLE COUNTY, IDAHO

PART OF THE N.E. 1/4 OF SECTION 17 T. 2 N. R. 38 E. B. M.



UNPLATTED

• DENOTES IRON RODS  
 UTILITY EASEMENTS 6 FT WIDE  
 ALONG SOUTH HOLLIPARK DRIVE  
 OTHERS ARE 8 FT WIDE UNLESS  
 OTHERWISE NOTED.

**First American Title Company**  
 Idaho Falls, Idaho 83404

This sketch is made solely for the purpose of assisting in locating the premises. The company assumes no liability for alleged loss or damage which may result from reliance on this map.