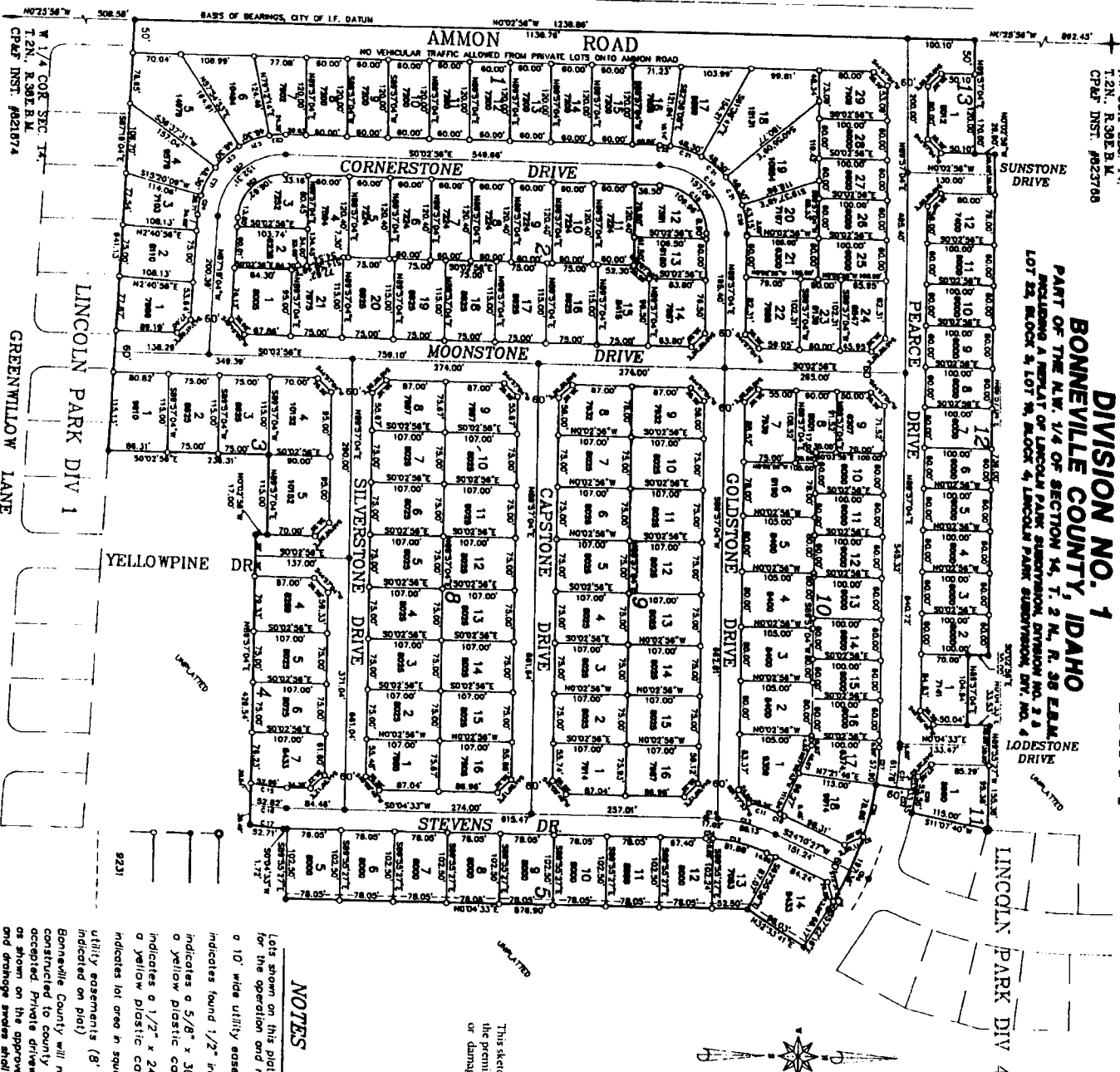


CORNERSTONE COMMUNITY

NW COR. SEC. 14,
T.2N., R.30E.B.M.
CP&P INST. #623768

DIVISION NO. 1
BONNEVILLE COUNTY, IDAHO
PART OF THE N.W. 1/4 OF SECTION 14, T. 2 N., R. 30 E. B.M.
INCLUDING A REPLAT OF LINCOLN PARK SUBDIVISION, DIVISION NO. 2 & 3
LOT 22, BLOCK 9, LOT 9, BLOCK 4, LINCOLN PARK SUBDIVISION, DIV. NO. 4



AREA	AREA	PERCENT	PERCENT
C10	178.00	28.00	48.83
C11	83.00	28.00	48.83
C12	317.00	28.00	81.87
C13	324.00	28.00	81.87
C14	324.00	28.00	81.87
C15	1174.00	28.00	22.82
C16	1079.00	28.00	22.82
C17	879.00	28.00	22.82
C18	879.00	28.00	22.82
C19	1174.00	28.00	22.82
C20	1174.00	28.00	22.82
C21	1174.00	28.00	22.82
C22	1174.00	28.00	22.82
C23	1174.00	28.00	22.82
C24	1174.00	28.00	22.82
C25	1174.00	28.00	22.82
C26	1174.00	28.00	22.82
C27	1174.00	28.00	22.82
C28	1174.00	28.00	22.82
C29	1174.00	28.00	22.82
C30	1174.00	28.00	22.82
C31	1174.00	28.00	22.82
C32	1174.00	28.00	22.82
C33	1174.00	28.00	22.82
C34	1174.00	28.00	22.82
C35	1174.00	28.00	22.82
C36	1174.00	28.00	22.82
C37	1174.00	28.00	22.82
C38	1174.00	28.00	22.82
C39	1174.00	28.00	22.82
C40	1174.00	28.00	22.82
C41	1174.00	28.00	22.82
C42	1174.00	28.00	22.82
C43	1174.00	28.00	22.82
C44	1174.00	28.00	22.82
C45	1174.00	28.00	22.82
C46	1174.00	28.00	22.82
C47	1174.00	28.00	22.82
C48	1174.00	28.00	22.82
C49	1174.00	28.00	22.82
C50	1174.00	28.00	22.82
C51	1174.00	28.00	22.82
C52	1174.00	28.00	22.82
C53	1174.00	28.00	22.82
C54	1174.00	28.00	22.82
C55	1174.00	28.00	22.82
C56	1174.00	28.00	22.82
C57	1174.00	28.00	22.82
C58	1174.00	28.00	22.82
C59	1174.00	28.00	22.82
C60	1174.00	28.00	22.82
C61	1174.00	28.00	22.82
C62	1174.00	28.00	22.82
C63	1174.00	28.00	22.82
C64	1174.00	28.00	22.82
C65	1174.00	28.00	22.82
C66	1174.00	28.00	22.82
C67	1174.00	28.00	22.82
C68	1174.00	28.00	22.82
C69	1174.00	28.00	22.82
C70	1174.00	28.00	22.82
C71	1174.00	28.00	22.82
C72	1174.00	28.00	22.82
C73	1174.00	28.00	22.82
C74	1174.00	28.00	22.82
C75	1174.00	28.00	22.82
C76	1174.00	28.00	22.82
C77	1174.00	28.00	22.82
C78	1174.00	28.00	22.82
C79	1174.00	28.00	22.82
C80	1174.00	28.00	22.82
C81	1174.00	28.00	22.82
C82	1174.00	28.00	22.82
C83	1174.00	28.00	22.82
C84	1174.00	28.00	22.82
C85	1174.00	28.00	22.82
C86	1174.00	28.00	22.82
C87	1174.00	28.00	22.82
C88	1174.00	28.00	22.82
C89	1174.00	28.00	22.82
C90	1174.00	28.00	22.82
C91	1174.00	28.00	22.82
C92	1174.00	28.00	22.82
C93	1174.00	28.00	22.82
C94	1174.00	28.00	22.82
C95	1174.00	28.00	22.82
C96	1174.00	28.00	22.82
C97	1174.00	28.00	22.82
C98	1174.00	28.00	22.82
C99	1174.00	28.00	22.82
C100	1174.00	28.00	22.82



First American Tile Company
Idaho Falls, Idaho 83404

This sketch is made solely for the purpose of assisting in locating the premises. The company assumes no liability for alleged loss or damage which may result from reliance on this map.

NOTES

- Lots shown on this plat are included in a lighting district and will be assessed for the operation and maintenance costs.
- a 10' wide utility easement is reserved along the street side of all lots.
- indicates found 1/2" iron rod w/ no cap.
- indicates a 5/8" x 30" iron rod placed with a yellow plastic cap marked L.S. 722.
- indicates a 1/2" x 24" iron rod placed with a yellow plastic cap marked L.S. 722
- indicates lot area in square feet.
- utility easements (8' wide unless otherwise indicated on plat)
- Bonneville County will not maintain roads until accepted to county standards and officially accepted. Private driveways will be constructed as shown on the approved improvement drawings and drainage swales shall be maintained by owner.