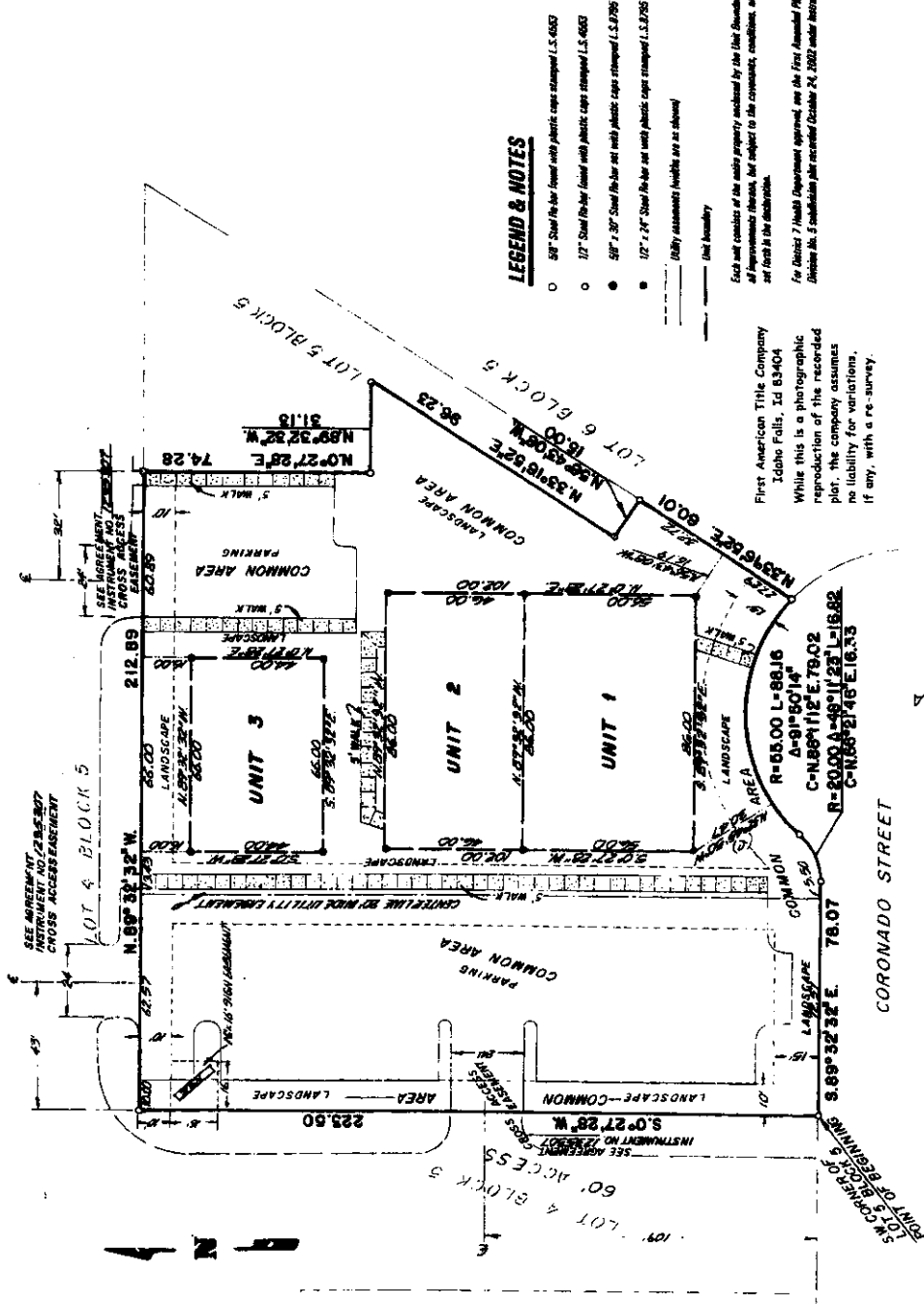


CORONADO PROFESSIONAL PARK

IN THE CITY OF IDAHO FALLS, BONNEVILLE COUNTY, IDAHO

PURSUANT TO IDAHO CODE, TITLE 55, CHAPTER 15
 BEING PART OF LOT 5 BLOCK 5 OF THE FIRST AMENDED PLAT OF CHANNING WAY ADDITION, DIVISION NO. 5
 IN THE S.E. 1/4 OF SECTION 28 T. 2 N. R. 38 E., B.M.



LEGEND & NOTES

- 50" Steel Re-bar (used with plastic caps stamped I.S. 8795)
 - 12" Steel Re-bar (used with plastic caps stamped I.S. 8795)
 - 50" x 30" Steel Re-bar (used with plastic caps stamped I.S. 8795)
 - 12" x 24" Steel Re-bar (used with plastic caps stamped I.S. 8795)
- Utility easements (visible as shown)
- Unit Boundary

Each unit consists of the main property indicated by the Unit Boundary lines including the land and all improvements thereon, but subject to the covenants, conditions, and restrictions and easements set forth in the description.

For District 7 Health Department approval, see the First Amended Plat of Channing Way Addition, Division No. 5 publication plate recorded October 24, 2007 under Instrument No. 1862344.

First American Title Company
 Idaho Falls, Id 83404

While this is a photographic reproduction of the recorded plat, the company assumes no liability for variations, if any, with a re-survey.

VALENCIA DRIVE

CORONADO STREET