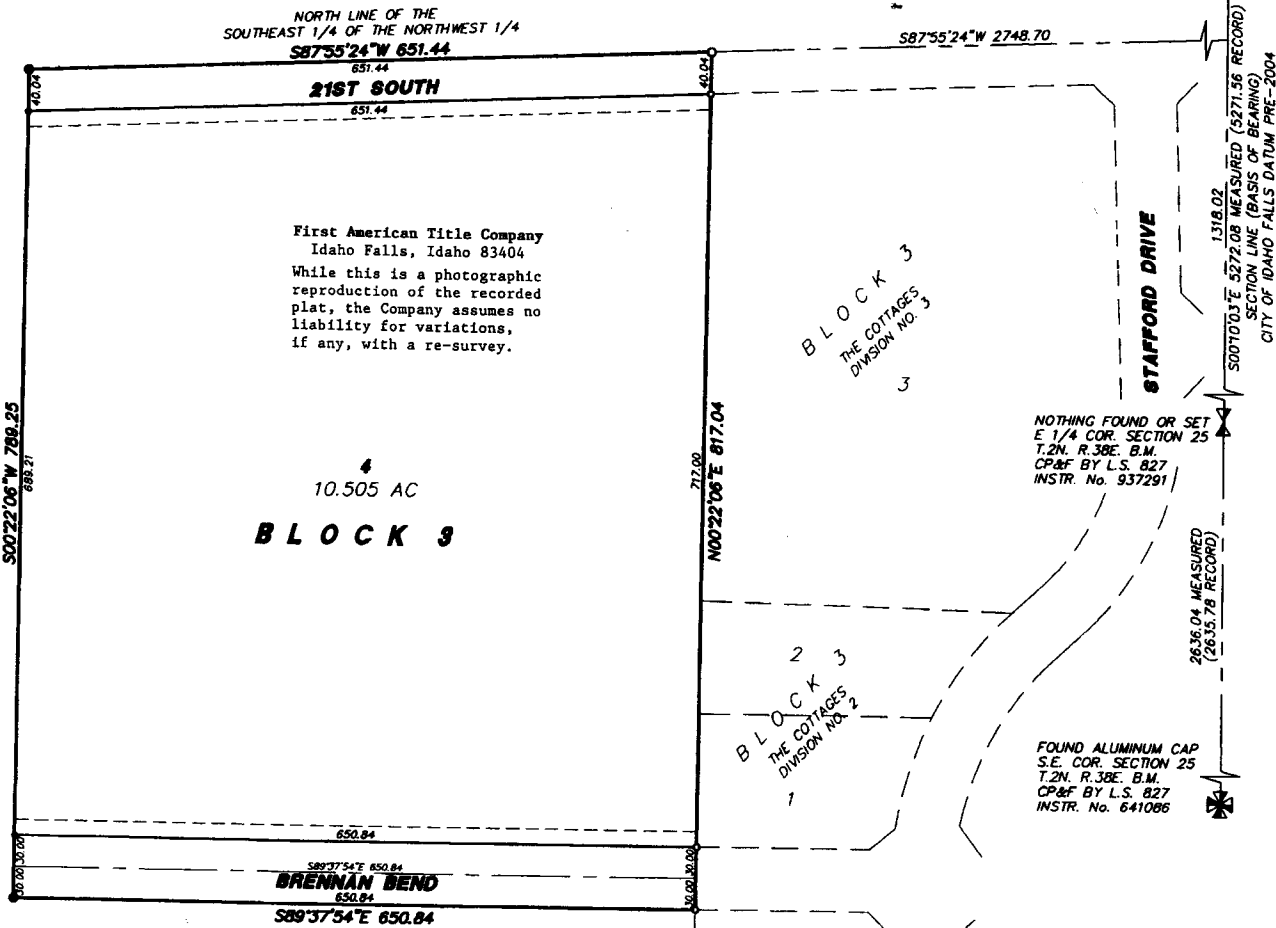


THE COTTAGES
DIVISION NO. 8
AN ADDITION TO THE CITY OF AMMON,
BONNEVILLE COUNTY, IDAHO
BEING PART OF THE S.E. 1/4 OF THE N.W. 1/4 OF SECTION 25 T.2N. R.38E. B.M.

FOUND ALUMINUM CAP
 N.E. COR. SECTION 25
 T.2N. R.38E. B.M.
 CP&F BY L.S. 827
 INSTR. No. 937293



First American Title Company
 Idaho Falls, Idaho 83404
 While this is a photographic
 reproduction of the recorded
 plat, the Company assumes no
 liability for variations,
 if any, with a re-survey.

4
 10.505 AC
B L O C K 3

2 3
B L O C K 2
 THE COTTAGES
 DIVISION NO. 2

1 2
B L O C K 4
 THE COTTAGES
 DIVISION NO. 4

NOTHING FOUND OR SET
 E 1/4 COR. SECTION 25
 T.2N. R.38E. B.M.
 CP&F BY L.S. 827
 INSTR. No. 937291

FOUND ALUMINUM CAP
 S.E. COR. SECTION 25
 T.2N. R.38E. B.M.
 CP&F BY L.S. 827
 INSTR. No. 641086

LEGEND & NOTES

- 5/8" x 30" Steel rebar set with plastic cap stamped L.S. 8795
- 1/2" x 24" Steel rebar set with plastic cap stamped L.S. 8795
- 5/8" Steel rebar found with caps stamped L.S. 8795
- 1/2" Steel rebar found with caps stamped L.S. 8795

--- A 15 foot wide Public Utility Easement is hereby granted/reserved along all road frontages within each lot. All other public utility easements are 15 feet wide unless noted otherwise.

This division contains 1 lot. (10.505 acre average lot size)

Utilities shall have the right to install, maintain, and operate their equipment above and below ground and all other related facilities within the Public Utility Easements identified on this plat map as may be necessary or desirable in providing utility services within and without the lots identified herein, including the right of access to such facilities and the right to require removal of any obstructions including structures, trees and vegetation that may be placed within the PUE. The utility may require the lot owner to remove all structures within the PUE at the lot owner's expense, or the utility may remove such structures at the lot owner's expense. At no time may any permanent structures be placed within the PUE or any other obstruction which interferes with the use of the PUE without the prior written approval of the utilities with facilities in the PUE.

