

THE COTTAGES

DIVISION NO. 6

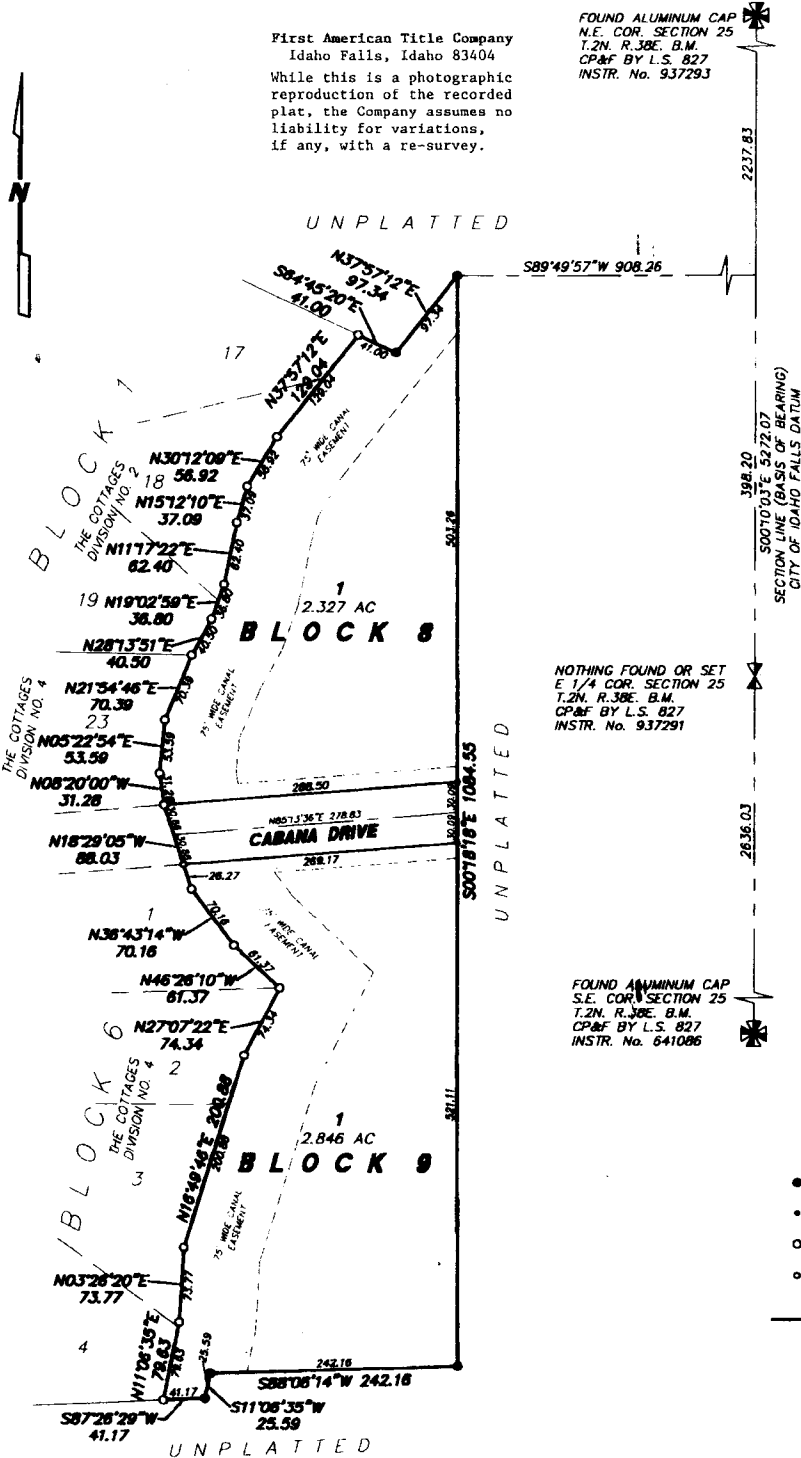
AN ADDITION TO THE CITY OF AMMON, BONNEVILLE COUNTY, IDAHO

IN THE E 1/2 OF SECTION 26 T.2N. R.38E. B.M.

First American Title Company
Idaho Falls, Idaho 83404

While this is a photographic reproduction of the recorded plat, the Company assumes no liability for variations, if any, with a re-survey.

FOUND ALUMINUM CAP
N.E. COR. SECTION 25
T.2N. R.38E. B.M.
CP&F BY L.S. 827
INSTR. No. 93729J



NOTHING FOUND OR SET
E 1/4 COR. SECTION 25
T.2N. R.38E. B.M.
CP&F BY L.S. 827
INSTR. No. 93729I

FOUND ALUMINUM CAP
S.E. COR. SECTION 25
T.2N. R.38E. B.M.
CP&F BY L.S. 827
INSTR. No. 641086

LEGEND & NOTES

- 5/8" x 30" Steel Re-bar set with plastic cap stamped L.S.8795
- 1/2" x 24" Steel Re-bar set with plastic cap stamped L.S.8795
- 5/8" steel Re-bar found with caps stamped L.S.8795
- 1/2" Steel Re-bar found with caps stamped L.S.8795

A fifteen foot wide Utility Easement is hereby granted along all road frontages within each lot. All other utility easements are fifteen feet wide unless otherwise noted.

This division contains 2 lots. Average lot size: 2.59 acres.