

SW COR. SEC. 22.  
T.3N., R.38E.B.M.  
CP&F INST. #670728

NW COR. SEC. 22.  
T.3N., R.38E.B.M.  
CP&F INST. #637853

# COTTONWOOD ACRES

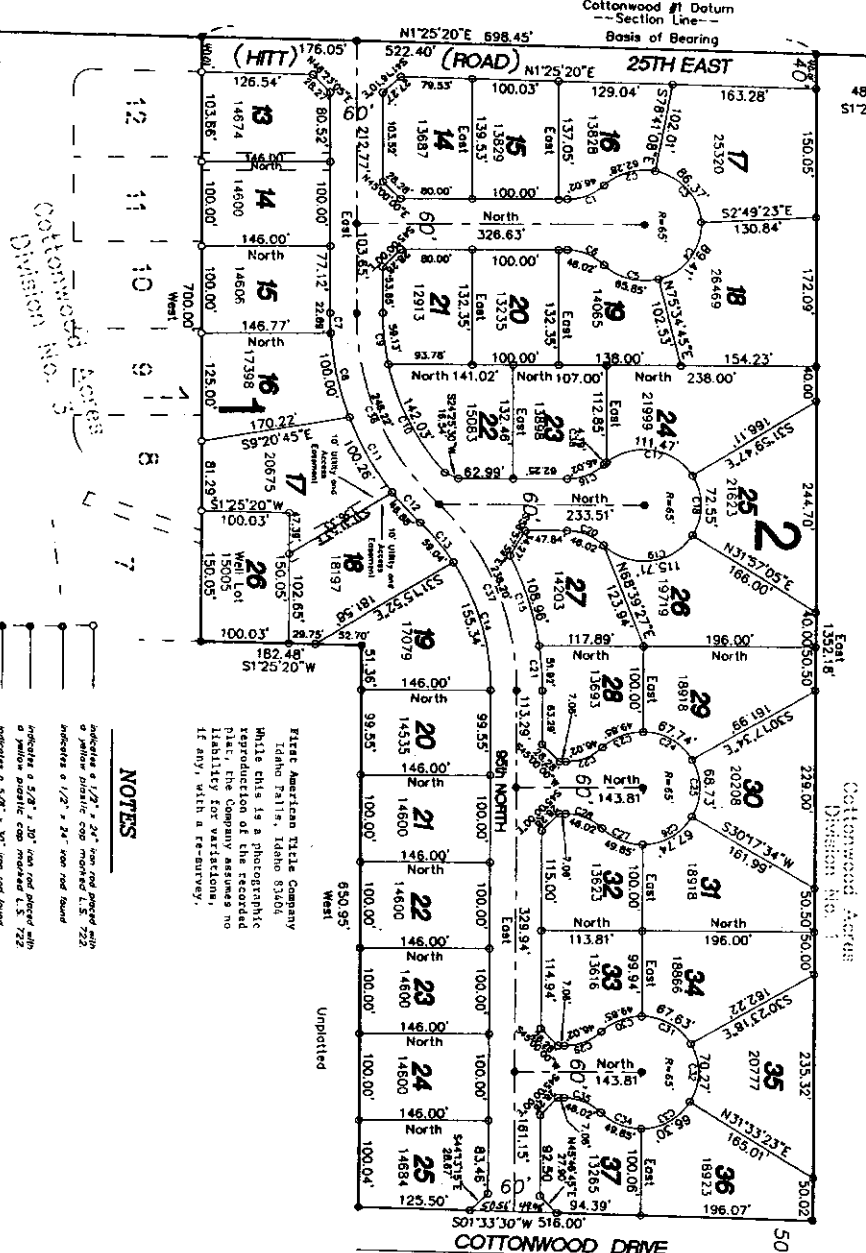
## DIVISION NO. 5

### BONNEVILLE COUNTY, IDAHO

#### PART OF THE NW 1/4 OF SECTION 22 T. 3 N. R. 38 E. B.M.

| AREA | ACRES   | BEARING | CORNER  |
|------|---------|---------|---------|
| C1   | 41.56   | 46.00'  | 44.80'  |
| C2   | 54.57   | 43.00'  | 42.78'  |
| C3   | 78.00   | 65.00'  | 80.37'  |
| C4   | 78.48   | 65.00'  | 88.41'  |
| C5   | 78.48   | 65.00'  | 88.41'  |
| C6   | 78.48   | 65.00'  | 88.41'  |
| C7   | 331.25  | 340.00' | 22.89'  |
| C8   | 1650.47 | 340.00' | 100.00' |
| C9   | 1203.45 | 320.00' | 59.13'  |
| C10  | 270.00  | 320.00' | 142.00' |
| C11  | 1531.46 | 270.00' | 153.34' |
| C12  | 1531.46 | 270.00' | 153.34' |
| C13  | 1531.46 | 270.00' | 153.34' |
| C14  | 1531.46 | 270.00' | 153.34' |
| C15  | 1531.46 | 270.00' | 153.34' |
| C16  | 1531.46 | 270.00' | 153.34' |
| C17  | 1531.46 | 270.00' | 153.34' |
| C18  | 1531.46 | 270.00' | 153.34' |
| C19  | 1079.99 | 45.00'  | 115.71' |
| C20  | 4396.43 | 40.00'  | 46.02'  |
| C21  | 1100.53 | 51.82'  | 51.82'  |
| C22  | 1100.53 | 51.82'  | 51.82'  |
| C23  | 1100.53 | 51.82'  | 51.82'  |
| C24  | 1100.53 | 51.82'  | 51.82'  |
| C25  | 1100.53 | 51.82'  | 51.82'  |
| C26  | 1100.53 | 51.82'  | 51.82'  |
| C27  | 1100.53 | 51.82'  | 51.82'  |
| C28  | 1100.53 | 51.82'  | 51.82'  |
| C29  | 1100.53 | 51.82'  | 51.82'  |
| C30  | 1100.53 | 51.82'  | 51.82'  |
| C31  | 1100.53 | 51.82'  | 51.82'  |
| C32  | 1100.53 | 51.82'  | 51.82'  |
| C33  | 1100.53 | 51.82'  | 51.82'  |
| C34  | 1100.53 | 51.82'  | 51.82'  |
| C35  | 1100.53 | 51.82'  | 51.82'  |
| C36  | 1100.53 | 51.82'  | 51.82'  |
| C37  | 1100.53 | 51.82'  | 51.82'  |
| C38  | 1100.53 | 51.82'  | 51.82'  |
| C39  | 1100.53 | 51.82'  | 51.82'  |
| C40  | 1100.53 | 51.82'  | 51.82'  |

| AREA | ACRES   | BEARING | CORNER |
|------|---------|---------|--------|
| C41  | 1100.53 | 51.82'  | 51.82' |
| C42  | 1100.53 | 51.82'  | 51.82' |
| C43  | 1100.53 | 51.82'  | 51.82' |
| C44  | 1100.53 | 51.82'  | 51.82' |
| C45  | 1100.53 | 51.82'  | 51.82' |
| C46  | 1100.53 | 51.82'  | 51.82' |
| C47  | 1100.53 | 51.82'  | 51.82' |
| C48  | 1100.53 | 51.82'  | 51.82' |
| C49  | 1100.53 | 51.82'  | 51.82' |
| C50  | 1100.53 | 51.82'  | 51.82' |
| C51  | 1100.53 | 51.82'  | 51.82' |
| C52  | 1100.53 | 51.82'  | 51.82' |
| C53  | 1100.53 | 51.82'  | 51.82' |
| C54  | 1100.53 | 51.82'  | 51.82' |
| C55  | 1100.53 | 51.82'  | 51.82' |
| C56  | 1100.53 | 51.82'  | 51.82' |
| C57  | 1100.53 | 51.82'  | 51.82' |
| C58  | 1100.53 | 51.82'  | 51.82' |
| C59  | 1100.53 | 51.82'  | 51.82' |
| C60  | 1100.53 | 51.82'  | 51.82' |



### NOTES

1. These American Title Company Idaho Plats, Idaho 53504 While this is a photographic reproduction of the recorded Plat, the Company assumes no liability for variations, if any, with a re-survey.

2. Indicate a 1/2" x 24" iron rod placed with a yellow plastic cap marked L.S. 722

3. Indicate a 1/2" x 24" iron rod found

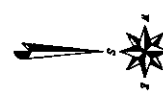
4. Indicate a 5/8" x 20" iron rod placed with a yellow plastic cap marked L.S. 722

5. Indicate a 5/8" x 30" iron rod found

6. 10' wide utility easement is reserved along the street side of all lots.

7. Utility easements (10' wide unless otherwise indicated on plat) No additional lot corners are shown on this plat.

8. Bonneville County will not maintain roads until constructed to county standards and officially recorded. The County will not be responsible for any damage to the property or any other person's property caused by any drainage or other works that are not maintained by owner of such lot.



Cottonwood Acres  
Division No. 4