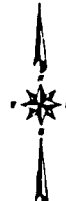
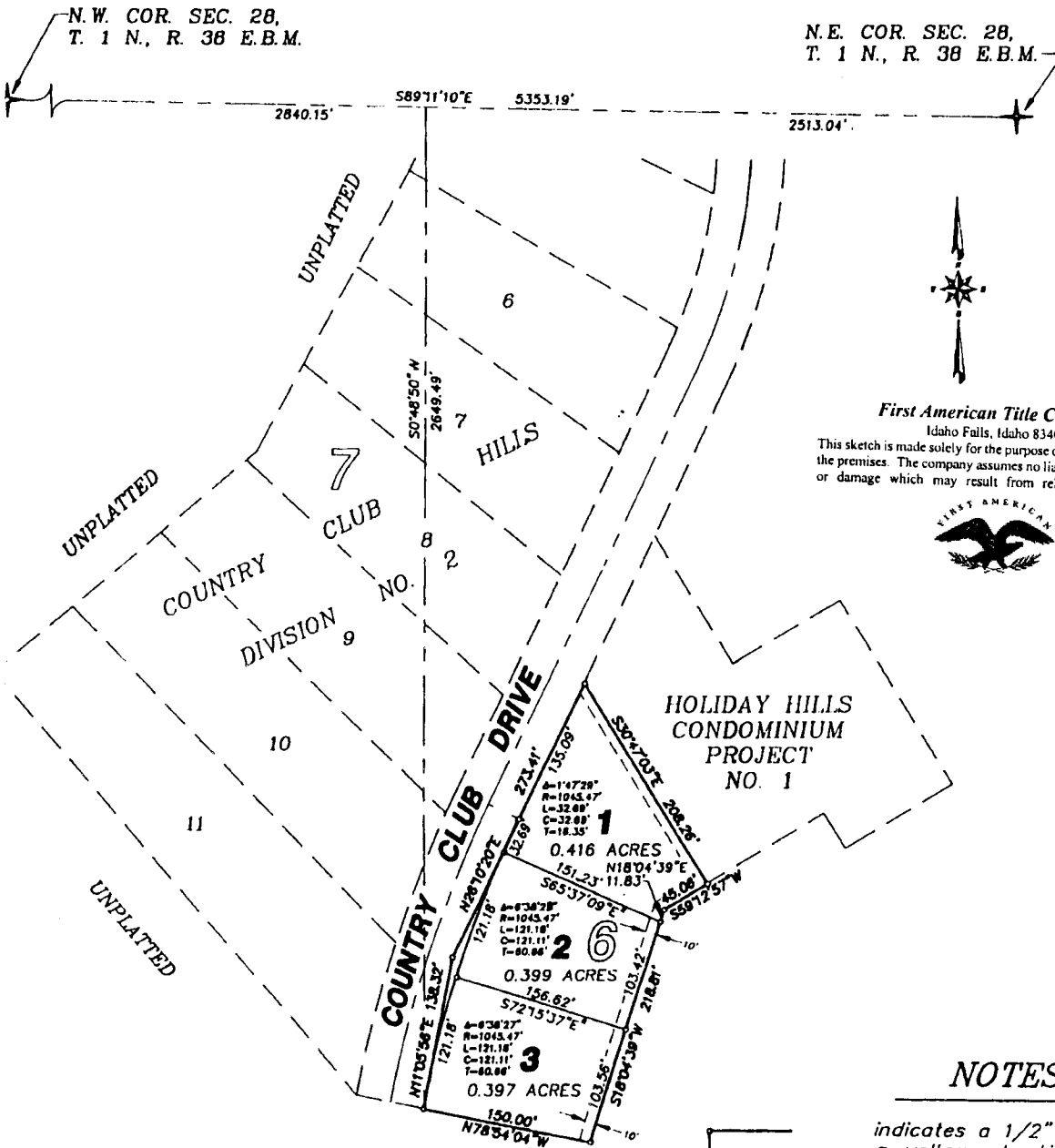


COUNTRY CLUB HILLS

DIVISION NO. 3

BONNEVILLE COUNTY, IDAHO

PART OF THE S.W. 1/4 OF SECTION 28, T. 1 N., R. 38 E.B.M.



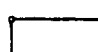

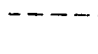
First American Title Company

Idaho Falls, Idaho 83404

This sketch is made solely for the purpose of assisting in locating the premises. The company assumes no liability for alleged loss or damage which may result from reliance on this map



NOTES

-  indicates a 1/2" x 24" iron rod placed with a yellow plastic cap marked L.S. 722.
-  a 10' wide utility easement is reserved along the street side of all lots.
- 0.444 ACRES indicates lot area in acres.
-  utility easements are 8' through each lot unless otherwise shown.