

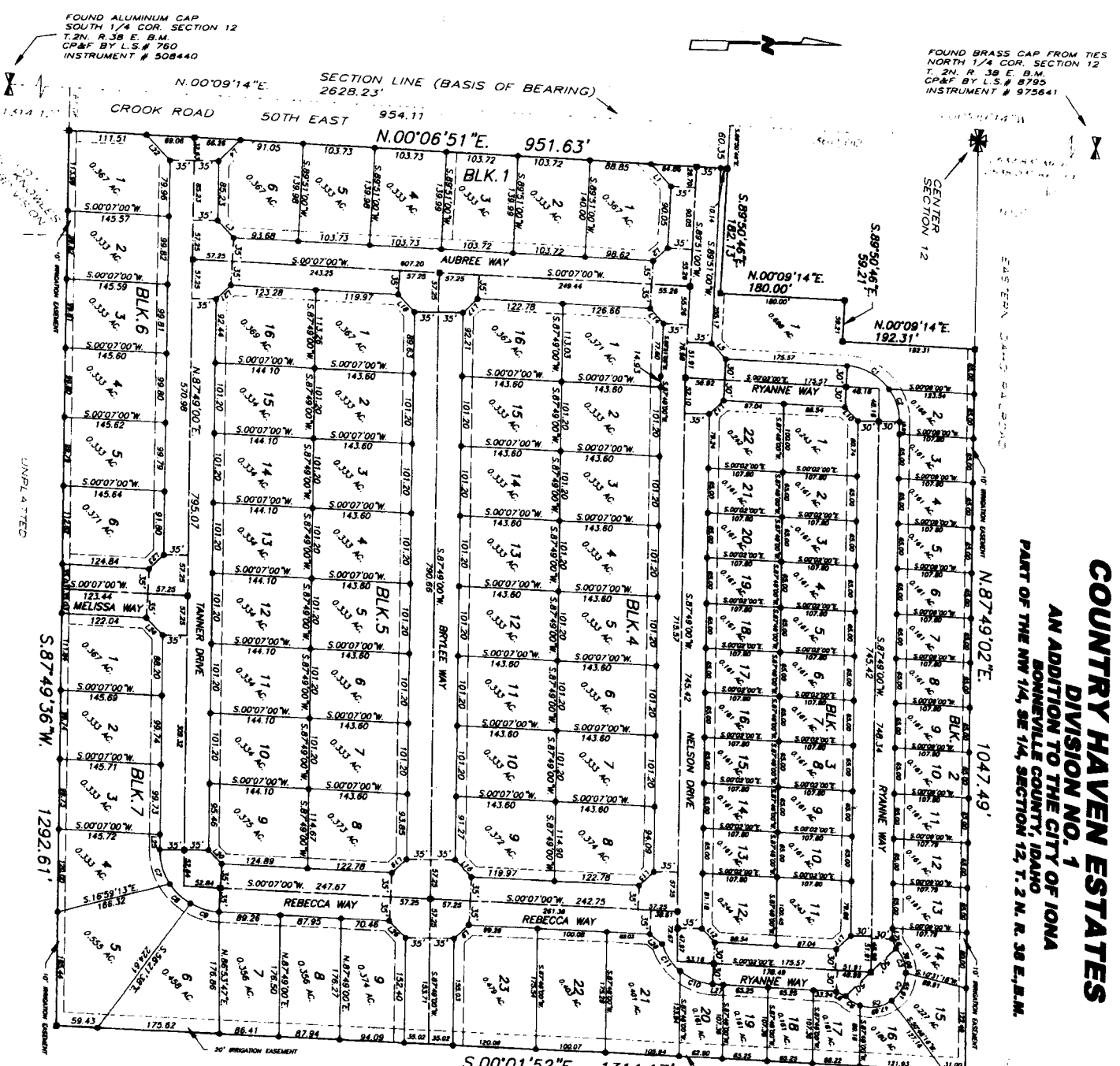
COUNTRY HAVEN ESTATES

DIVISION NO. 1

AN ADDITION TO THE CITY OF IONA

BONNEVILLE COUNTY, IDAHO

PART OF THE NW 1/4, SE 1/4, SECTION 12, T. 2 N. R. 38 E. B.M.



CURVE TABLE

#	RADIUS	DELTA	CHORD LENGTH
C1	80.00	51.1834°	168.27
C2	80.00	36.3276°	150.18
C3	50.00	44.4579°	128.07
C4	50.00	57.3842°	128.37
C5	50.00	54.9842°	142.38
C6	50.00	28.8755°	82.01
C7	80.00	32.8207°	92.23
C8	80.00	29.2308°	81.08
C9	80.00	17.5146°	42.88
C10	80.00	17.5105°	51.50
C11	80.00	33.5650°	145.76

LINE TABLE

#	BEARING	DIST.
L1	N.44.58 S6° E.	42.33
L2	S.45.01 00° E.	28.15
L3	S.43.58 00° W.	34.08
L4	N.46.02 04° W.	43.27
L5	S.44.54 30° W.	31.11
L6	S.65.36 32° W.	15.12
L7	S.67.49 00° W.	15.12
L8	N.22.10 28° E.	15.12
L9	N.46.02 00° W.	28.85
L10	N.43.52 30° E.	27.75
L11	S.46.08 30° E.	28.81
L12	S.43.53 30° W.	27.75
L13	N.46.06 30° W.	28.81
L14	N.44.58 00° E.	28.85
L15	S.46.02 00° E.	28.85
L16	S.43.58 00° W.	34.08
L17	N.46.02 00° W.	28.85
L18	N.43.58 00° E.	34.08
L19	S.46.02 00° E.	28.85
L20	S.43.58 00° W.	27.71
L21	N.46.02 00° W.	28.85
L22	N.43.52 30° E.	48.09
L23	S.46.02 00° E.	28.85
L24	N.43.58 00° E.	34.08
L25	N.87.49 00° E.	21.65
L26	N.43.58 00° E.	34.08
L27	N.00.02 00° W.	14.27
L28	N.35.37 28° E.	23.23

First American Title Company
 Idaho Falls, ID 83404

While this is a photographic reproduction of the recorded plat, the company assumes no liability for variations, if any, with a re-survey.

LEGEND & NOTES

- SET 1/2" x 24" Steel Re-bar WITH PLASTIC CAP STAMPED L.S.# 10944
- SET 5/8" x 30" Steel Re-bar WITH PLASTIC CAP STAMPED L.S.# 10944
- Utility Easements are 15 feet wide unless otherwise noted.

FOUND ALUMINUM CAP SOUTH 1/4 COR. SECTION 12 T. 2N. R. 38 E. B.M. CP&F BY L.S.# 780 INSTRUMENT # 508440

FOUND BRASS CAP FROM TIES NORTH 1/4 COR. SECTION 12 T. 2N. R. 38 E. B.M. CP&F BY L.S.# 8795 INSTRUMENT # 975641

S.00°01'52"E. 1314.17'

UNPLATTED

UNPLATTED

UNPLATTED