

COUNTRY SUNSET ESTATES

DIVISION NO. 2

AN ADDITION TO BONNEVILLE COUNTY, IDAHO
PART OF THE SECTION 28, T. 2 N., R. 39 E., B.M.

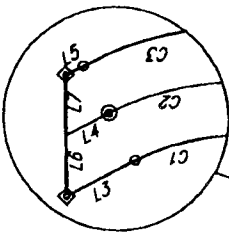
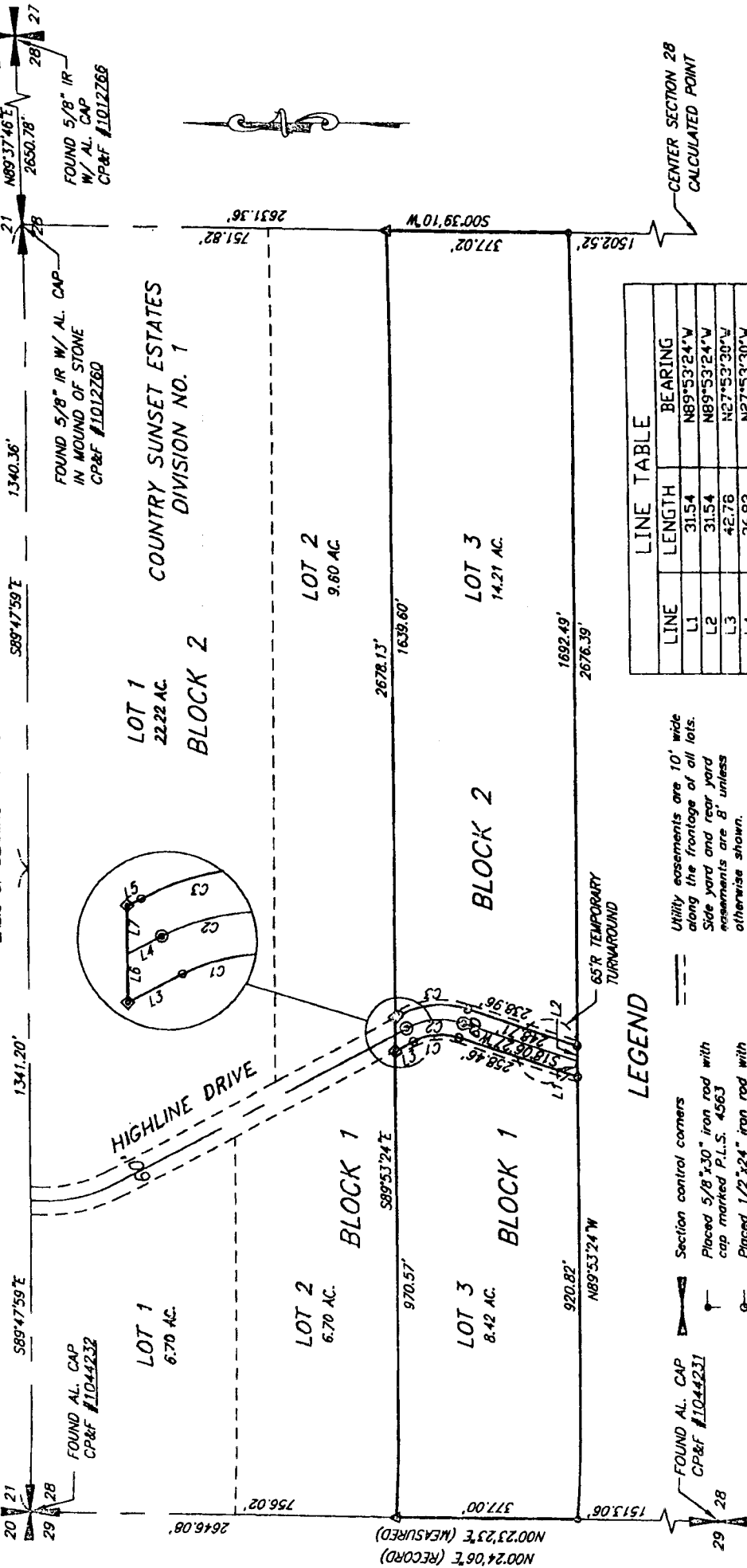
CURVE TABLE						
CURVE	LENGTH	RADIUS	DELTA	TANGENT	CHORD B	CHORD
C1	96.34	120.00	45°59'57"	50.94	N04°53'31"W	93.77
C2	120.43	150.00	45°59'57"	63.67	N04°53'31"W	117.22
C3	144.51	180.00	45°59'57"	76.40	N04°53'31"W	140.66



First American Title Company
Idaho Falls, Idaho 83404

This sketch is made solely for the purpose of assisting in locating the premises. The company assumes no liability for alleged loss or damage which may result from reliance on this map.

BASIS OF BEARING - Rimrock Acres Div. 3 RECORDED PLAT INST. #498663



LINE TABLE		
LINE	LENGTH	BEARING
L1	31.54	N89°53'24"W
L2	31.54	N89°53'24"W
L3	42.76	N27°53'30"W
L4	26.83	N27°53'30"W
L5	10.87	N27°53'30"W
L6	33.98	S89°53'24"E
L7	33.98	S89°53'24"E

LEGEND

- FOUND AL. CAP CP&F #1044231
- Section control corners
 - Placed 5/8"x30" iron rod with cap marked P.L.S. 4563
 - Placed 1/2"x24" iron rod with cap marked P.L.S. 4563
 - Found 5/8"x30" iron rod with cap marked P.L.S. 4563
 - Found 1/2"x24" iron rod with cap marked P.L.S. 4563
- Utility easements are 10' wide along the frontage of all lots. Side yard and rear yard easements are 8' unless otherwise shown.
- Monument to be placed after construction.

CENTER SECTION 28 CALCULATED POINT